

Meridian® Stackable Storage™ Cabinets

Prices effective December 7, 2009

Introduction	page 2
Meridian® Stackable Storage™ Cabinets	3
Cabinets	5
Standard Pull	5
Bevel Pull	23
Sloped Pull	41
Cabinet Components	66
Cabinet Accessories	68
Indices	79
By Name	79
By Number	81
Appendices	
To view and/or print price book appendices, select the appropriate price book from www.HermanMiller.com .	



Introduction

A Note on the Organization of This Book

There are a few signals that will help you understand the organization of this book. Once you know them, you should be able to find your way around easily.

Like a newspaper, this book is formatted with columns of text and illustrations that run vertically.

Information wraps from one column to the next and continues for as many pages as it needs to.

Black bars are clues.

A black bar at the top of a page signals the start of information about a product.

This information is divided into two sections, each signaled by a black bar. Product Information includes a description, additional notes, and dimensional drawings. Specification Information, which always begins at the top of a column, includes a series of steps. Each step represents a decision you need to make in order to complete your product number. Steps must be followed sequentially. The number of pages needed to complete information on a product varies; some will be complete in one page; others may fill three or four pages. Just continue going through the steps until you run into the next product, signaled by the black bar at the top of the page.

Black tabs running along the outside edge of the page help you locate what section you are in or what section you want to go to. You can thumb forwards or backwards to find a section; tabs and text appear on both sides of the page.

The additional pages in the back of the book include the appendices and indices. They are signaled by a long black bar running along the outside edge of the page.

The index is presented two ways.

The first index is in alphabetical order by product name. It can be helpful if you are new to the products and numbering scheme or if you are looking for a type of product, such as work chair or round table.

The second index is by product number. It lists, in alphanumeric order, the base product number, typically a five-digit number.

General Information

This book is effective December 7, 2009, subject to change without notice. Products may be purchased from authorized Herman Miller dealers who will quote prices upon request. For more information about our products and services or to see a list of dealers, visit www.HermanMiller.com.

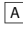
All prices are list prices. Additional services, such as planning services, design, storage, and installation, are not included and must be added to these prices when the additional services are requested.


Illustrations, specifications, and prices are based on the latest information at the time of publication. The right is reserved to make changes at any time without notice in prices, fabrics, finishes, materials, specifications, and models, and also to discontinue models and finishes.

Dimensions shown in the drawings are engineering drawing dimensions rounded up to the nearest $\frac{1}{8}$ ". Product is shipped set up or knocked down. Products that include "Shipped knocked down" in the description require some assembly. If this statement does not appear in the description, the product is shipped assembled.

Service problems are normally handled by a Herman Miller authorized dealer. Where this cannot be accomplished on a local level, service problems should be referred to the Customer Care Representative for your region, Herman Miller, Inc., Zeeland, Michigan 49464.

20-Day or Less/Assigned Lead-Time Shipments

All products and options in this price book not designated by an Assigned Program icon  will ship in **20 business days or less** after being acknowledged by Herman Miller.

Products and options designated by an  are on the assigned lead-time program and may ship in 20 days, less than 20 days, or more than 20 days from order acknowledgement.

Meridian® Stackable Storage™ Cabinets

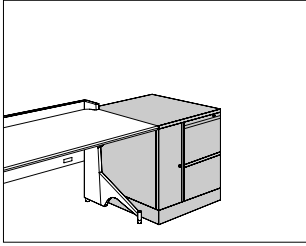
Cabinets

Cabinet Components

Cabinet Accessories

Stackable Storage™ Cabinet, 1
Module High, Standard Pull

MS162.
MS163.



Product Information

Description

This 24^{5/8}" freestanding storage cabinet has 1 module with a variety of configurations and standard pulls. Doors and drawers are available in smooth or textured steel. The cabinet's top is available in metal or veneer. 5 base heights are available; all bases include adjustable glides. A counterweight is included.

The bottom module's file/file drawer configuration includes a side-to-side filing rail in the 24"-wide file drawer and front-to-back filing rails in the 30"-wide file drawer. The box/box/file configuration includes an adjustable metal divider in each box drawer and a file compressor in each file drawer. All drawers are controlled by 1 lock. The briefcase storage area locks with a slide bar secured behind the locking drawers.

Notes

For examples of stackable modules, see Sample Stackable Storage™ Cabinet Configurations in Appendices.

Front-facing filing module is the reference point when specifying orientation for full- or half-dome top or oversail veneer top.

To pass cables through bottom module (M), specify cable management channel (CC). Order pass-through harness (PG330.) separately.

To convert filing direction in file/file drawer configuration, order 1 of the following products separately:

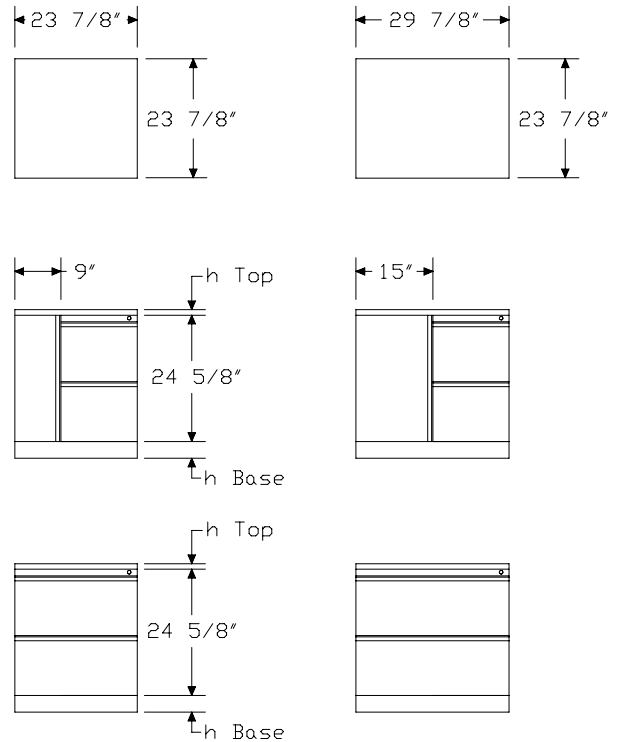
- Front-to-back filing rail (9P002)
- Side-to-side filing rail (9R130)

Order optional accessories separately:

- Drawer divider (73-1567-D)
- File drawer organizer (73-9874-FDO)
- File drawer organizer (LG901)
- Pencil tray (73-1516-PT)
- Stationery tray (73-7082-SST)

For keyed-alike locks, order lock plugs separately. See Keyed-Alike Information in Appendices.

Dimensions



Stackable Storage™ Cabinet, 1 Module High, Standard Pull *continued*

Specification Information

Step 1.

MS16

Step 2. Width

- 2. 24" wide
- 3. 30" wide

Step 3. Configuration

- M** file/file
- N** door left, file/file right
- P** file/file left, door right
- R** door left, box/box/file right
- S** box/box/file left, door right

Prices for Steps 1-3.

MS162.M	\$848
N	\$1200
P	\$1200
R	\$1242
S	\$1242

MS163.M	\$880
N	\$1230
P	\$1230
R	\$1272
S	\$1272

Step 4. Paint/Steel Type

SS smooth paint on smooth steel	+\$0
TS smooth paint on textured steel	+\$0
XS textured paint on smooth steel	+\$0

Step 5. Surface Finish

For smooth paint on smooth steel (SS) or smooth paint on textured steel (TS)

Nonmetallic Paint	+\$0
Metallic Paint	+\$50

Sand Texture Paint

For textured paint on smooth steel (XS)

7L dune	+\$0
7M chai	+\$0
7N grass	+\$0
7U blue ridge	+\$0
7V loden	+\$0
7W napa	+\$0
7Y sedona	+\$0
7Z mink	+\$0
8T gull	+\$0
8Y moonbeam	+\$0
B4 blue medium	+\$0
ZK cappuccino	+\$0

Bright Sand Texture Paint

For textured paint on smooth steel (XS)

91 white	+\$0
CL cool grey neutral	+\$0
G1 graphite	+\$0
WN warm grey neutral	+\$0

Step 6. Top

	2.	3.
NT no top	+\$0	0
T1 1"-high painted metal top with squared edge	+\$0	0
T2 1 1/4"-high painted metal top with squared edge	+\$0	0
J3 1 1/4"-high cathedral recut veneer top A	+\$204	224
TF 1 1/4"-high wood veneer top A	+\$210	231
D1 6 1/2"-high full dome, side-to-side	+\$210	231
D2 6 1/2"-high full dome, front-to-back	+\$210	231
H1 6 1/2"-high half dome, sloping left	+\$210	231
H2 6 1/2"-high half dome, sloping right	+\$210	231
H3 6 1/2"-high half dome, sloping front	+\$210	231
H4 6 1/2"-high half dome, sloping back	+\$210	231
TV1 1 1/8"-high wood veneer top and wood composite edge with oversail front A	+\$315	315

Stackable Storage™ Cabinet, 1 Module High, Standard Pull *continued*

Step 7. Veneer Top Finish

Recut Veneer

For 1 1/4"-high cathedral recut veneer top (J3)

DU	cathedral recut natural maple <input type="checkbox"/>	+\$0
HU	cathedral recut light anigre <input type="checkbox"/>	+\$0
JU	cathedral recut aged cherry <input type="checkbox"/>	+\$0
VU	cathedral recut light brown walnut <input type="checkbox"/>	+\$0
WU	cathedral recut walnut on cherry <input type="checkbox"/>	+\$0
XU	cathedral recut medium red cherry <input type="checkbox"/>	+\$0
ZU	cathedral recut chocolate brown sapele <input type="checkbox"/>	+\$0

Wood Veneer

For 1 1/4"-high wood veneer top (TF)

V3	cherry <input type="checkbox"/>	+\$18
Z3	warm red cherry <input type="checkbox"/>	+\$18
Z5	maple <input type="checkbox"/>	+\$18
2U	light brown walnut <input type="checkbox"/>	+\$24
3U	medium red cherry <input type="checkbox"/>	+\$24
6U	chocolate brown sapele <input type="checkbox"/>	+\$24
ED	aged cherry <input type="checkbox"/>	+\$24
EG	medium brown walnut <input type="checkbox"/>	+\$24
EK	medium red walnut <input type="checkbox"/>	+\$24
EY	light anigre <input type="checkbox"/>	+\$24
UL	natural maple <input type="checkbox"/>	+\$24
UQ	light cherry <input type="checkbox"/>	+\$24
UV	red cherry <input type="checkbox"/>	+\$24
UX	walnut on cherry <input type="checkbox"/>	+\$24

Wood Veneer

For 1 1/8"-high wood veneer top and wood composite edge with oversail front (TV1)

ED	aged cherry <input type="checkbox"/>	+\$24
EG	medium brown walnut <input type="checkbox"/>	+\$24
EK	medium red walnut <input type="checkbox"/>	+\$24
EY	light anigre <input type="checkbox"/>	+\$24
UL	natural maple <input type="checkbox"/>	+\$24
UQ	light cherry <input type="checkbox"/>	+\$24
UV	red cherry <input type="checkbox"/>	+\$24
UX	walnut on cherry <input type="checkbox"/>	+\$24

Step 8. Lock

KA	keyed alike	+\$0
KC	keyed differently, chrome	+\$0
KD	keyed differently, black	+\$0

Step 9. Base Height

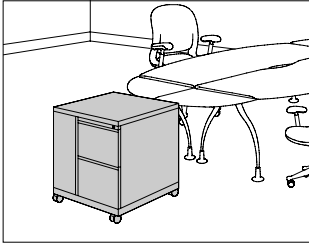
B1	1"-high base	+\$0
B2	1 1/2"-high base	+\$0
B3	2 1/4"-high base	+\$0
B4	3 1/4"-high base	+\$0
B5	4 1/4"-high base	+\$32

Step 10. Cable Management Channel

For file/file (M)

NC	no cable management channel	+\$0
CC	cable management channel	+\$69

Mobile Stackable Storage™ MS1C62
 Cabinet, 1 Module High, Standard MS1C63
 Pull



Product Information

Description

This 29⁵/₈"-high mobile storage cabinet has 1 module with a variety of configurations and standard pulls. Doors and drawers are available in smooth or textured steel. The cabinet's top is available in metal or veneer. The 5¹/₂"-high caster base includes a 1¹/₂"-high metal frame and 4 4"-diameter casters; 2 casters include a brake. A counterweight is included.

The bottom module's file/file drawer configuration includes a side-to-side filing rail in the 24"-wide file drawer and front-to-back filing rails in the 30"-wide file drawer. The box/box/file configuration includes an adjustable metal divider in each box drawer and a file compressor in each file drawer. All drawers are controlled by 1 lock. The briefcase storage area locks with a slide bar secured behind the locking drawers.

Notes

For examples of stackable modules, see Sample Stackable Storage™ Cabinet Configurations in Appendices.

Front-facing filing module is the reference point when specifying orientation for full- or half-dome top or oversail veneer top.

Casters must be field installed.

Cables cannot be routed through mobile cabinets.

To convert filing direction in file/file drawer configuration, order 1 of the following products separately:

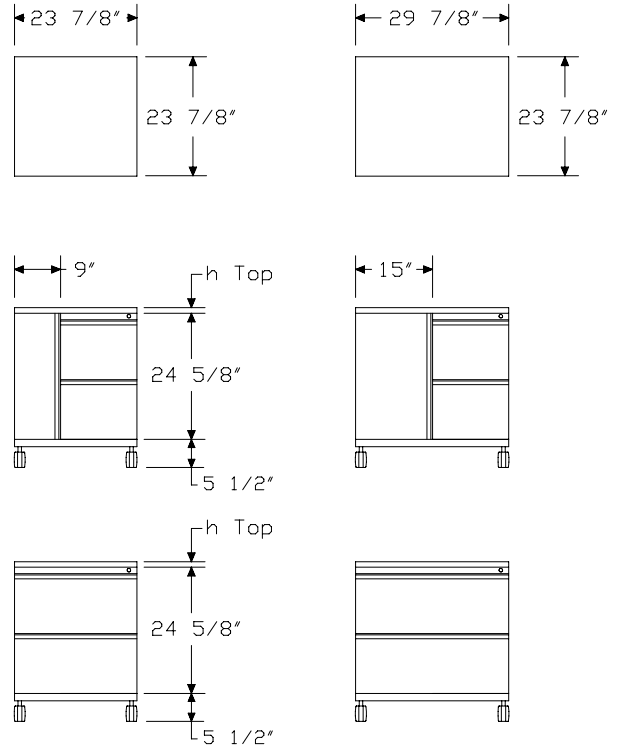
- Front-to-back filing rail (9P002)
- Side-to-side filing rail (9R130)

Order optional accessories separately:

- Drawer divider (73-1567-D)
- File drawer organizer (73-9874-FDO)
- File drawer organizer (LG901)
- Pencil tray (73-1516-PT)
- Stationery tray (73-7082-SST)

For keyed-alike locks, order lock plugs separately. See Keyed-Alike Information in Appendices.

Dimensions



Mobile Stackable Storage™
Cabinet, 1 Module High, Standard
Pull *continued*

Specification Information

Step 1.

MS1C6

Step 2. Width

- 2. 24" wide
- 3. 30" wide

Step 3. Configuration

- M** file/file
- N** door left, file/file right
- P** file/file left, door right
- R** door left, box/box/file right
- S** box/box/file left, door right

Prices for Steps 1-3.

MS1C62. M	\$1030
N	\$1381
P	\$1381
R	\$1423
S	\$1423

MS1C63. M

M	\$1060
N	\$1412
P	\$1412
R	\$1452
S	\$1452

Step 4. Paint/Steel Type

SS smooth paint on smooth steel	+\$0
TS smooth paint on textured steel	+\$0
XS textured paint on smooth steel	+\$0

Step 5. Surface Finish

For smooth paint on smooth steel (SS) or smooth paint on textured steel (TS)

Nonmetallic Paint	+\$0
Metallic Paint	+\$50

Sand Texture Paint

For textured paint on smooth steel (XS)

7L dune	+\$0
7M chai	+\$0
7N grass	+\$0
7U blue ridge	+\$0
7V loden	+\$0
7W napa	+\$0
7Y sedona	+\$0
7Z mink	+\$0
8T gull	+\$0
8Y moonbeam	+\$0
B4 blue medium	+\$0
ZK cappuccino	+\$0

Bright Sand Texture Paint

For textured paint on smooth steel (XS)

91 white	+\$0
CL cool grey neutral	+\$0
G1 graphite	+\$0
WN warm grey neutral	+\$0

Step 6. Top

	2.	3.
NT no top	+\$0	0
T1 1"-high painted metal top with squared edge	+\$0	0
T2 1¼"-high painted metal top with squared edge	+\$0	0
J3 1¼"-high cathedral recut veneer top A	+\$204	224
TF 1¼"-high wood veneer top A	+\$210	231
D1 6½"-high full dome, side-to-side	+\$210	231
D2 6½"-high full dome, front-to-back	+\$210	231
H1 6½"-high half dome, sloping left	+\$210	231
H2 6½"-high half dome, sloping right	+\$210	231
H3 6½"-high half dome, sloping front	+\$210	231
H4 6½"-high half dome, sloping back	+\$210	231
TV1 1⅝"-high wood veneer top and wood composite edge with oversail front A	+\$315	315

Mobile Stackable Storage™
Cabinet, 1 Module High, Standard
Pull *continued*

Step 7. Veneer Top Finish

Recut Veneer

For 1¼"-high cathedral recut veneer top (J3)

DU	cathedral recut natural maple <input type="checkbox"/> A	+\$0
HU	cathedral recut light anigre <input type="checkbox"/> A	+\$0
JU	cathedral recut aged cherry <input type="checkbox"/> A	+\$0
VU	cathedral recut light brown walnut <input type="checkbox"/> A	+\$0
WU	cathedral recut walnut on cherry <input type="checkbox"/> A	+\$0
XU	cathedral recut medium red cherry <input type="checkbox"/> A	+\$0
ZU	cathedral recut chocolate brown sapele <input type="checkbox"/> A	+\$0

Wood Veneer

For 1¼"-high wood veneer top (TF)

V3	cherry <input type="checkbox"/> A	+\$18
Z3	warm red cherry <input type="checkbox"/> A	+\$18
Z5	maple <input type="checkbox"/> A	+\$18
2U	light brown walnut <input type="checkbox"/> A	+\$24
3U	medium red cherry <input type="checkbox"/> A	+\$24
6U	chocolate brown sapele <input type="checkbox"/> A	+\$24
ED	aged cherry <input type="checkbox"/> A	+\$24
EG	medium brown walnut <input type="checkbox"/> A	+\$24
EK	medium red walnut <input type="checkbox"/> A	+\$24
EY	light anigre <input type="checkbox"/> A	+\$24
UL	natural maple <input type="checkbox"/> A	+\$24
UQ	light cherry <input type="checkbox"/> A	+\$24
UV	red cherry <input type="checkbox"/> A	+\$24
UX	walnut on cherry <input type="checkbox"/> A	+\$24

Wood Veneer

For 1⅝"-high wood veneer top and wood composite edge with oversail front (TV1)

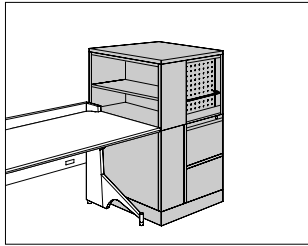
ED	aged cherry <input type="checkbox"/> A	+\$24
EG	medium brown walnut <input type="checkbox"/> A	+\$24
EK	medium red walnut <input type="checkbox"/> A	+\$24
EY	light anigre <input type="checkbox"/> A	+\$24
UL	natural maple <input type="checkbox"/> A	+\$24
UQ	light cherry <input type="checkbox"/> A	+\$24
UV	red cherry <input type="checkbox"/> A	+\$24
UX	walnut on cherry <input type="checkbox"/> A	+\$24

Step 8. Lock

KA	keyed alike	+\$0
KC	keyed differently, chrome	+\$0
KD	keyed differently, black	+\$0

Stackable Storage™ Cabinet, 2 Modules High, Standard Pull

MS262.
MS263.



Product Information

Description

This freestanding storage cabinet has 2 modules with a variety of configurations to store or display project materials, binders and books, printers, fax machines, and personal items. It includes a 24 5/8"-high bottom module and a 20"- or 49"-high top module. Each module is configured separately. The cabinet has standard pulls. Doors and drawers are available in smooth or textured steel. Translucent doors are available on select top modules; they do not lock. Translucent doors have a painted aluminum frame with brushed aluminum sloped pulls (U1). The cabinet's top is available in metal or veneer. 5 base heights are available; all bases include adjustable glides.

The bottom module's file/file drawer configuration includes a side-to-side filing rail in the 24"-wide file drawer and front-to-back filing rails in the 30"-wide file drawer. The box/box/file configuration includes an adjustable metal divider in each box drawer and a file compressor in each file drawer. All drawers are controlled by 1 lock. The briefcase storage area locks with a slide bar secured behind the locking drawers.

The top module interiors include the following:

Component—Interior

Bookcase—1 adjustable shelf

20"-High Storage Case—1 adjustable shelf

49"-High Storage Case—2 adjustable shelves

Pullout Shelf—1 hanging file frame and 1 divider

49"-High Wardrobe—1 side-to-side coat rod

Notes

For examples of stackable modules, see Sample Stackable Storage™ Cabinet Configurations in Appendices.

Front-facing filing module is the reference point when specifying orientation for full- or half-dome top or oversail veneer top.

For doors specified on 24"-wide top and bottom modules, 9"-wide doors must align on same side of cabinet.

To pass cables through bottom module (M), specify cable management channel (CC). Order pass-through harness (PG330.) separately.

To convert filing direction in file/file drawer configuration, order 1 of the following products separately:

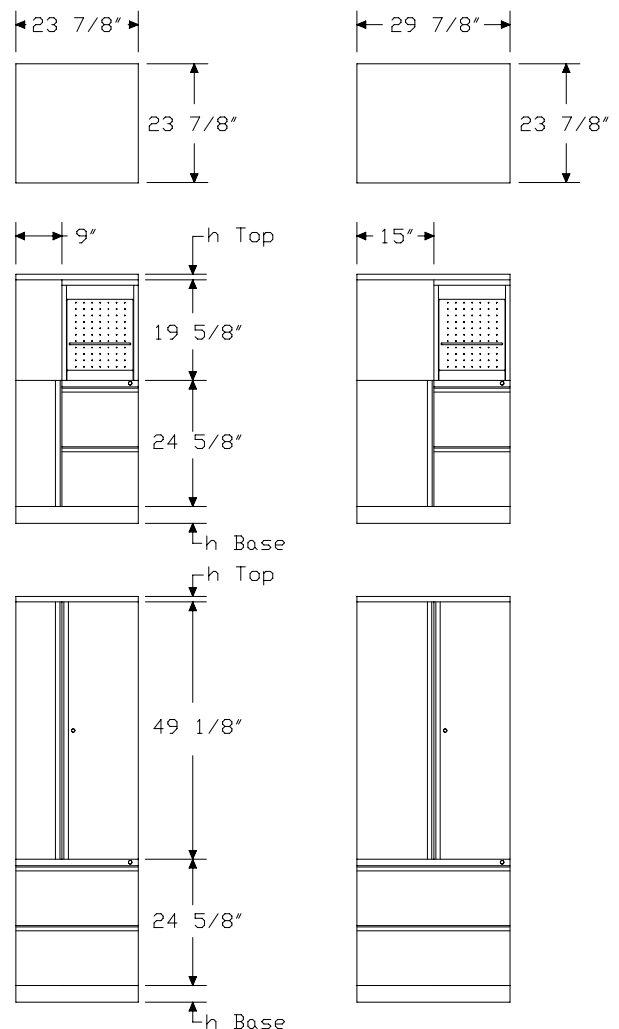
- Front-to-back filing rail (9P002)
- Side-to-side filing rail (9R130)

Order optional accessories separately:

- Adjustable shelf (MSAS)
- Binder backstop divider (4B-BD)
- Drawer divider (73-1567-D)
- File drawer organizer (73-9874-FDO)
- File drawer organizer (LG901)
- Pencil tray (73-1516-PT)
- Stationery tray (73-7082-SST)

For keyed-alike locks, order lock plugs separately. See Keyed-Alike Information in Appendices.

Dimensions



Stackable Storage™ Cabinet, 2 Modules High, Standard Pull

continued

Specification Information		
Step 1.		
MS26		
Step 2. Width		
2.1	24" wide	\$0
3.1	30" wide	\$0
Step 3. Top Module Configuration		
<i>For 24" wide (2.1)</i>		
A	20"-high module with 9"-wide door left and 15"-wide door right	+\$570
3	20"-high module with 9"-wide translucent door left and 15"-wide translucent door right A	+\$1133
B	20"-high module with 15"-wide door left and 9"-wide door right	+\$570
4	20"-high module with 15"-wide translucent door left and 9"-wide translucent door right A	+\$1133
C	20"-high dual-access module with bookcase left and 15"-wide door right	+\$631
D	20"-high dual-access module with 15"-wide door left and bookcase right	+\$631
E	20"-high dual-access module with bookcase left and 15"-wide display/pullout shelf right	+\$727
F	20"-high dual-access module with 15"-wide display/pullout shelf left and bookcase right	+\$727
T	20"-high open shelf	+\$388
K	49"-high module with 9"-wide door left and 15"-wide door right	+\$862
L	49"-high module with 15"-wide door left and 9"-wide door right	+\$862
H	49"-high module with 9"-wide wardrobe left and 15"-wide door right	+\$982
J	49"-high module with 15"-wide door left and 9"-wide wardrobe right	+\$982

<i>For 30" wide (3.1)</i>		
A	20"-high module with doors	+\$601
3	20"-high module with translucent doors A	+\$1164
C	20" high dual-access module with bookcase left and door right	+\$662
D	20" high dual-access module with door left and bookcase right	+\$662
E	20" high dual-access module with bookcase left and display/pullout shelf	+\$758
F	20" high dual-access module with display/pullout shelf left and bookcase right	+\$758
T	20"-high open shelf	+\$421
K	49"-high module with doors	+\$921
H	49"-high module with wardrobe left and door right	+\$1043
J	49"-high module with door left and wardrobe right	+\$1043

Step 4. Bottom Module Configuration		
<i>For 30" wide (3.1)</i>		
M	file/file	+\$880
N	door left, file/file right	+\$1230
P	file/file left, door right	+\$1230
R	door left, box/box/file right	+\$1272
S	box/box/file left, door right	+\$1272

<i>For 24" wide (2.1) with 20"-high module with 9"-wide door left and 15"-wide door right (A), 20"-high module with 9"-wide translucent door left and 15"-wide translucent door right (3), 20"-high dual-access module with bookcase left and 15"-wide door right (C), 20"-high dual-access module with bookcase left and 15"-wide display/pullout shelf right (E), 49"-high module with 9"-wide door left and 15"-wide door right (K), or 49"-high module with 9"-wide wardrobe left and 15"-wide door right (H)</i>		
M	file/file	+\$848
N	door left, file/file right	+\$1200
R	door left, box/box/file right	+\$1242

<i>For 24" wide (2.1) with 20"-high module with 15"-wide door left and 9"-wide door right (B), 20"-high module with 15"-wide translucent door left and 9"-wide translucent door right (4), 20"-high dual-access module with 15"-wide door left and bookcase right (D), 20"-high dual-access module with 15"-wide display/pullout shelf left and bookcase right (F), 49"-high module with 15"-wide door left and 9"-wide door right (L), or 49"-high module with 15"-wide door left and 9"-wide wardrobe right (J)</i>		
M	file/file	+\$848
P	file/file left, door right	+\$1200
S	box/box/file left, door right	+\$1242

Stackable Storage™ Cabinet, 2 Modules High, Standard Pull

continued

For 24" wide (2.1) with 20"-high open shelf (T)

M	file/file	+\$848
N	door left, file/file right	+\$1200
P	file/file left, door right	+\$1200
R	door left, box/box/file right	+\$1242
S	box/box/file left, door right	+\$1242

Step 5. Paint/Steel Type

SS	smooth paint on smooth steel	+\$0
TS	smooth paint on textured steel	+\$0
XS	textured paint on smooth steel	+\$0

Step 6. Surface Finish

For smooth paint on smooth steel (SS) or smooth paint on textured steel (TS)

Nonmetallic Paint	+\$0
Metallic Paint	+\$100

Sand Texture Paint

For textured paint on smooth steel (XS)

7L	dune	+\$0
7M	chai	+\$0
7N	grass	+\$0
7U	blue ridge	+\$0
7V	loden	+\$0
7W	napa	+\$0
7Y	sedona	+\$0
7Z	mink	+\$0
8T	gull	+\$0
8Y	moonbeam	+\$0
B4	blue medium	+\$0
ZK	cappuccino	+\$0

Bright Sand Texture Paint

For textured paint on smooth steel (XS)

91	white	+\$0
CL	cool grey neutral	+\$0
G1	graphite	+\$0
WN	warm grey neutral	+\$0

Step 7. Top

		2.1	3.1
NT	no top	+\$0	0
T1	1"-high painted metal top with squared edge	+\$0	0
T2	1/4"-high painted metal top with squared edge	+\$0	0
J3	1/4"-high cathedral recut veneer top A	+\$204	224
TF	1/4"-high wood veneer top A	+\$210	231
D1	6 1/2"-high full dome, side-to-side	+\$210	231
D2	6 1/2"-high full dome, front-to-back	+\$210	231
H1	6 1/2"-high half dome, sloping left	+\$210	231
H2	6 1/2"-high half dome, sloping right	+\$210	231
H3	6 1/2"-high half dome, sloping front	+\$210	231
H4	6 1/2"-high half dome, sloping back	+\$210	231
TV1	1 1/8"-high wood veneer top and wood composite edge with oversail front A	+\$315	315

Step 8. Veneer Top Finish

Recut Veneer

For 1 1/4"-high cathedral recut veneer top (J3)

DU	cathedral recut natural maple A	+\$0
HU	cathedral recut light anigre A	+\$0
JU	cathedral recut aged cherry A	+\$0
VU	cathedral recut light brown walnut A	+\$0
WU	cathedral recut walnut on cherry A	+\$0
XU	cathedral recut medium red cherry A	+\$0
ZU	cathedral recut chocolate brown sapele A	+\$0

Wood Veneer

For 1 1/4"-high wood veneer top (TF)

V3	cherry A	+\$18
Z3	warm red cherry A	+\$18
Z5	maple A	+\$18
2U	light brown walnut A	+\$24
3U	medium red cherry A	+\$24
6U	chocolate brown sapele A	+\$24
ED	aged cherry A	+\$24
EG	medium brown walnut A	+\$24
EK	medium red walnut A	+\$24
EY	light anigre A	+\$24
UL	natural maple A	+\$24
UQ	light cherry A	+\$24
UV	red cherry A	+\$24
UX	walnut on cherry A	+\$24

Stackable Storage™ Cabinet, 2 Modules High, Standard Pull

continued

Meridian® Stackable Storage™ Cabinets

Wood Veneer

For 1¹/₈"-high wood veneer top and wood composite edge with oversail front (TV1)

ED	aged cherry <input type="checkbox"/>	+\$24
EG	medium brown walnut <input type="checkbox"/>	+\$24
EK	medium red walnut <input type="checkbox"/>	+\$24
EY	light anigre <input type="checkbox"/>	+\$24
UL	natural maple <input type="checkbox"/>	+\$24
UQ	light cherry <input type="checkbox"/>	+\$24
UV	red cherry <input type="checkbox"/>	+\$24
UX	walnut on cherry <input type="checkbox"/>	+\$24

Step 9. Lock

KA	keyed alike	+\$0
KC	keyed differently, chrome	+\$0
KD	keyed differently, black	+\$0

Step 10. Base Height

B1	1"-high base	+\$0
B2	1 ¹ / ₂ "-high base	+\$0
B3	2 ¹ / ₄ "-high base	+\$0
B4	3 ¹ / ₄ "-high base	+\$0
B5	4 ¹ / ₄ "-high base	+\$32

Step 11. Translucent Finish

For 20"-high module with 9"-wide translucent door left and 15"-wide translucent door right (3), 20"-high module with translucent doors (3), or 20"-high module with 15"-wide translucent door left and 9"-wide translucent door right (4)

FS	frosted <input type="checkbox"/>	+\$0
TR	clear <input type="checkbox"/>	+\$0

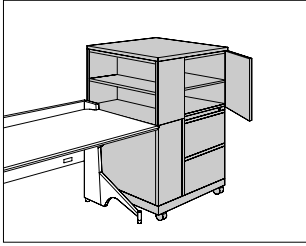
Step 12. Cable Management Channel

For file/file (M)

NC	no cable management channel	+\$0
CC	cable management channel	+\$69

Mobile Stackable Storage™
Cabinet, 2 Modules High,
Standard Pull

MS2C62
MS2C63



Product Information

Description

This mobile storage cabinet has 2 modules with a variety of configurations to store or display project materials, binders and books, printers, fax machines, and personal items. It includes a 29⁵/₈"-high bottom module and a 20"-high top module. Each module is configured separately. The cabinet has standard pulls. Doors and drawers are available in smooth or textured steel. Translucent doors are available on select top modules; they do not lock. Translucent doors have a painted aluminum frame with brushed aluminum sloped pulls (U1). The cabinet's top is available in metal or veneer.

The bottom module's file/file drawer configuration includes a side-to-side filing rail in the 24"-wide file drawer and front-to-back filing rails in the 30"-wide file drawer. The box/box/file configuration includes an adjustable metal divider in each box drawer and a file compressor in each file drawer. All drawers are controlled by 1 lock. The briefcase storage area locks with a slide bar secured behind the locking drawers. The 5¹/₂"-high caster base includes a 1¹/₂"-high metal frame and 4 4"-diameter casters; 2 casters include a brake. A counterweight is included.

The top module interiors include the following:

Component—Interior

Bookcase—1 adjustable shelf

20"-High Storage Case—1 adjustable shelf

Notes

For examples of stackable modules, see Sample Stackable Storage™ Cabinet Configurations in Appendices.

Front-facing filing module is the reference point when specifying orientation for full- or half-dome top or oversail veneer top.

Casters must be field installed.

For doors specified on 24"-wide top and bottom modules, 9"-wide doors must align on same side of cabinet.

Cables cannot be routed through mobile cabinets.

To convert filing direction in file/file drawer configuration, order 1 of the following products separately:

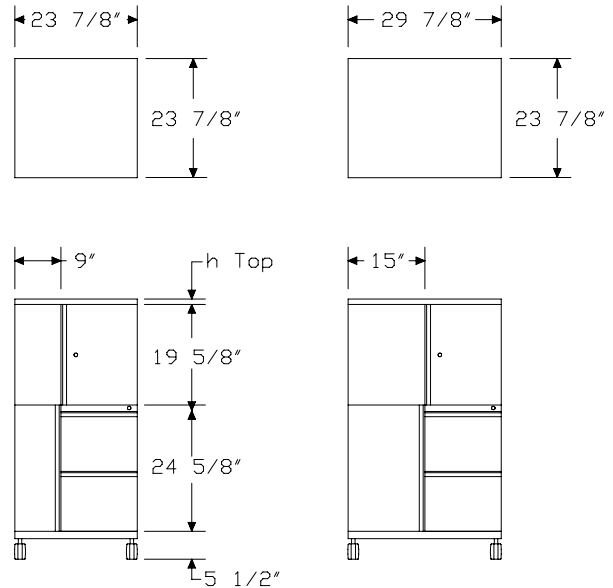
- Front-to-back filing rail (9P002)
- Side-to-side filing rail (9R130)

Order optional accessories separately:

- Adjustable shelf (MSAS)
- Drawer divider (73-1567-D)
- File drawer organizer (73-9874-FDO)
- File drawer organizer (LG901)
- Pencil tray (73-1516-PT)
- Stationery tray (73-7082-SST)

For keyed-alike locks, order lock plugs separately. See Keyed-Alike Information in Appendices.

Dimensions



Mobile Stackable Storage™
Cabinet, 2 Modules High,
Standard Pull *continued*

Specification Information

Step 1.

MS2C6

Step 2. Width

2.1	24" wide	\$0
3.1	30" wide	\$0

Step 3. Top Module Configuration

For 24" wide (2.1)

A	20"-high module with 9"-wide door left and 15"-wide door right	+\$570
3	20"-high module with 9"-wide translucent door left and 15"-wide translucent door right A	+\$1133
B	20"-high module with 15"-wide door left and 9"-wide door right	+\$570
4	20"-high module with 15"-wide translucent door left and 9"-wide translucent door right A	+\$1133
C	20"-high dual-access module with bookcase left and 15"-wide door right	+\$631
D	20"-high dual-access module with 15"-wide door left and bookcase right	+\$631
T	20"-high open shelf	+\$388

For 30" wide (3.1)

A	20"-high module with doors	+\$601
3	20"-high module with translucent doors A	+\$1164
C	20" high dual-access module with bookcase left and door right	+\$662
D	20" high dual-access module with door left and bookcase right	+\$662
T	20"-high open shelf	+\$421

Step 4. Bottom Module Configuration

For 30" wide (3.1)

M	file/file	+\$1060
N	door left, file/file right	+\$1412
P	file/file left, door right	+\$1412
R	door left, box/box/file right	+\$1452
S	box/box/file left, door right	+\$1452

For 24" wide (2.1) with 20"-high module with 9"-wide door left and 15"-wide door right (A), 20"-high module with 9"-wide translucent door left and 15"-wide translucent door right (3), or 20"-high dual-access module with bookcase left and 15"-wide door right (C)

M	file/file	+\$1030
N	door left, file/file right	+\$1381
R	door left, box/box/file right	+\$1423

For 24" wide (2.1) with 20"-high module with 15"-wide door left and 9"-wide door right (B), 20"-high module with 15"-wide translucent door left and 9"-wide translucent door right (4), or 20"-high dual-access module with 15"-wide door left and bookcase right (D)

M	file/file	+\$1030
P	file/file left, door right	+\$1381
S	box/box/file left, door right	+\$1423

For 24" wide (2.1) with 20"-high open shelf (T)

M	file/file	+\$1030
N	door left, file/file right	+\$1381
P	file/file left, door right	+\$1381
R	door left, box/box/file right	+\$1423
S	box/box/file left, door right	+\$1423

Step 5. Paint/Steel Type

SS	smooth paint on smooth steel	+\$0
TS	smooth paint on textured steel	+\$0
XS	textured paint on smooth steel	+\$0

Step 6. Surface Finish

For smooth paint on smooth steel (SS) or smooth paint on textured steel (TS)

Nonmetallic Paint	+\$0
Metallic Paint	+\$100

Mobile Stackable Storage™
Cabinet, 2 Modules High,
Standard Pull *continued*

Sand Texture Paint		
<i>For textured paint on smooth steel (XS)</i>		
7L	dune	+\$0
7M	chai	+\$0
7N	grass	+\$0
7U	blue ridge	+\$0
7V	loden	+\$0
7W	napa	+\$0
7Y	sedona	+\$0
7Z	mink	+\$0
8T	gull	+\$0
8Y	moonbeam	+\$0
B4	blue medium	+\$0
ZK	cappuccino	+\$0

Bright Sand Texture Paint		
<i>For textured paint on smooth steel (XS)</i>		
91	white	+\$0
CL	cool grey neutral	+\$0
G1	graphite	+\$0
WN	warm grey neutral	+\$0

Step 7. Top			
		2.1	3.1
NT	no top	+\$0	0
T1	1"-high painted metal top with squared edge	+\$0	0
T2	1¼"-high painted metal top with squared edge	+\$0	0
J3	1¼"-high cathedral recut veneer top <input type="checkbox"/>	+\$204	224
TF	1¼"-high wood veneer top <input type="checkbox"/>	+\$210	231
D1	6½"-high full dome, side-to-side	+\$210	231
D2	6½"-high full dome, front-to-back	+\$210	231
H1	6½"-high half dome, sloping left	+\$210	231
H2	6½"-high half dome, sloping right	+\$210	231
H3	6½"-high half dome, sloping front	+\$210	231
H4	6½"-high half dome, sloping back	+\$210	231
TV1	1⅛"-high wood veneer top and wood composite edge with oversail front <input type="checkbox"/>	+\$315	315

Step 8. Veneer Top Finish		
Recut Veneer		
<i>For 1¼"-high cathedral recut veneer top (J3)</i>		
DU	cathedral recut natural maple <input type="checkbox"/>	+\$0
HU	cathedral recut light anigre <input type="checkbox"/>	+\$0
JU	cathedral recut aged cherry <input type="checkbox"/>	+\$0
VU	cathedral recut light brown walnut <input type="checkbox"/>	+\$0
WU	cathedral recut walnut on cherry <input type="checkbox"/>	+\$0
XU	cathedral recut medium red cherry <input type="checkbox"/>	+\$0
ZU	cathedral recut chocolate brown sapele <input type="checkbox"/>	+\$0

Wood Veneer		
<i>For 1¼"-high wood veneer top (TF)</i>		
V3	cherry <input type="checkbox"/>	+\$18
Z3	warm red cherry <input type="checkbox"/>	+\$18
Z5	maple <input type="checkbox"/>	+\$18
2U	light brown walnut <input type="checkbox"/>	+\$24
3U	medium red cherry <input type="checkbox"/>	+\$24
6U	chocolate brown sapele <input type="checkbox"/>	+\$24
ED	aged cherry <input type="checkbox"/>	+\$24
EG	medium brown walnut <input type="checkbox"/>	+\$24
EK	medium red walnut <input type="checkbox"/>	+\$24
EY	light anigre <input type="checkbox"/>	+\$24
UL	natural maple <input type="checkbox"/>	+\$24
UQ	light cherry <input type="checkbox"/>	+\$24
UV	red cherry <input type="checkbox"/>	+\$24
UX	walnut on cherry <input type="checkbox"/>	+\$24

Wood Veneer		
<i>For 1⅛"-high wood veneer top and wood composite edge with oversail front (TV1)</i>		
ED	aged cherry <input type="checkbox"/>	+\$24
EG	medium brown walnut <input type="checkbox"/>	+\$24
EK	medium red walnut <input type="checkbox"/>	+\$24
EY	light anigre <input type="checkbox"/>	+\$24
UL	natural maple <input type="checkbox"/>	+\$24
UQ	light cherry <input type="checkbox"/>	+\$24
UV	red cherry <input type="checkbox"/>	+\$24
UX	walnut on cherry <input type="checkbox"/>	+\$24

Step 9. Lock		
KA	keyed alike	+\$0
KC	keyed differently, chrome	+\$0
KD	keyed differently, black	+\$0

Mobile Stackable Storage™
Cabinet, 2 Modules High,
Standard Pull *continued*

Meridian® Stackable Storage™ Cabinets

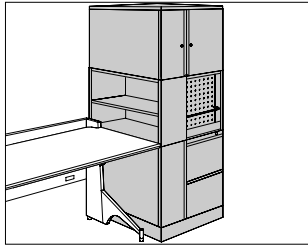
Step 10. Translucent Finish

For 20"-high module with 9"-wide translucent door left and 15"-wide translucent door right (3), 20"-high module with translucent doors (3), or 20"-high module with 15"-wide translucent door left and 9"-wide translucent door right (4)

FS	frosted <input type="checkbox"/>	+ \$0
TR	clear <input type="checkbox"/>	+ \$0

Stackable Storage™ Cabinet, 3
Modules High, Standard Pull

MS362.
MS363.



Product Information

Description

This freestanding storage cabinet has 3 modules with a variety of configurations to store or display project materials, binders and books, printers, fax machines, and personal items. It includes a 24⁵/₈"-high bottom module, a 20"-high middle module, and a 20"-high top module. Each module is configured separately. The cabinet has standard pulls. Doors and drawers are available in smooth or textured steel. Translucent doors are available on select top modules; they do not lock. Translucent doors have a painted aluminum frame with brushed aluminum sloped pulls (U1). The cabinet's top is available in metal or veneer. 5 base heights are available; all bases include adjustable glides. The bottom module's file/file drawer configuration includes a side-to-side filing rail in the 24"-wide file drawer and front-to-back filing rails in the 30"-wide file drawer. The box/box/file configuration includes an adjustable metal divider in each box drawer and a file compressor in each file drawer. All drawers are controlled by 1 lock. The briefcase storage area locks with a slide bar secured behind the locking drawers. The top and middle module interiors include the following:

Component—Interior

Bookcase—1 adjustable shelf

Storage Case—1 adjustable shelf

Pullout Shelf—1 hanging file frame and 1 divider

Notes

For examples of stackable modules, see Sample Stackable Storage™ Cabinet Configurations in Appendices.

Front-facing filing module is the reference point when specifying orientation for full- or half-dome top or oversail veneer top.

For doors specified on 24"-wide top and/or middle module and bottom module, 9"-wide doors must align on same side of cabinet.

To pass cables through bottom module (M), specify cable management channel (CC). Order pass-through harness (PG330.) separately.

To convert filing direction in file/file drawer configuration, order 1 of the following products separately:

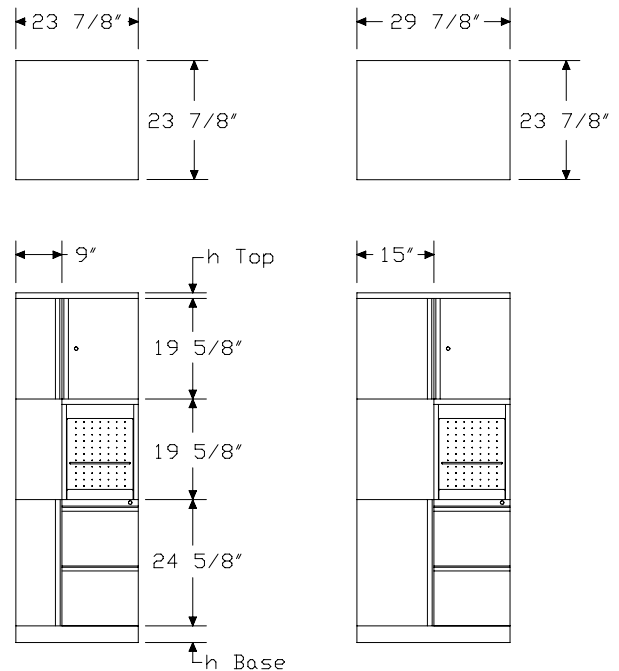
- Front-to-back filing rail (9P002)
- Side-to-side filing rail (9R130)

Order optional accessories separately:

- Adjustable shelf (MSAS)
- Binder backstop divider (4B-BD)
- Drawer divider (73-1567-D)
- File drawer organizer (73-9874-FDO)
- File drawer organizer (LG901)
- Pencil tray (73-1516-PT)
- Stationery tray (73-7082-SST)

For keyed-alike locks, order lock plugs separately. See Keyed-Alike Information in Appendices.

Dimensions



Stackable Storage™ Cabinet, 3 Modules High, Standard Pull

continued

Specification Information		
Step 1.		
MS36		
Step 2. Width		
2.1	24" wide	\$0
3.1	30" wide	\$0
Step 3. Top Module Configuration		
<i>For 24" wide (2.1)</i>		
A	20"-high module with 9"-wide door left and 15"-wide door right	+\$570
3	20"-high module with 9"-wide translucent door left and 15"-wide translucent door right A	+\$1133
B	20"-high module with 15"-wide door left and 9"-wide door right	+\$570
4	20"-high module with 15"-wide translucent door left and 9"-wide translucent door right A	+\$1133
C	20"-high dual-access module with bookcase left and 15"-wide door right	+\$631
D	20"-high dual-access module with 15"-wide door left and bookcase right	+\$631
<i>For 30" wide (3.1)</i>		
A	20"-high module with doors	+\$601
3	20"-high module with translucent doors A	+\$1164
C	20" high dual-access module with bookcase left and door right	+\$662
D	20" high dual-access module with door left and bookcase right	+\$662
Step 4. Middle Module Configuration		
<i>For 30" wide (3.1)</i>		
A	20"-high module with doors	+\$601
3	20"-high module with translucent doors A	+\$1164
C	20" high dual-access module with bookcase left and door right	+\$662
D	20" high dual-access module with door left and bookcase right	+\$662
E	20" high dual-access module with bookcase left and display/pullout shelf	+\$758
F	20" high dual-access module with display/pullout shelf left and bookcase right	+\$758
T	20"-high open shelf	+\$421

<i>For 24" wide (2.1) with 20"-high module with 9"-wide door left and 15"-wide door right (A), 20"-high module with 9"-wide translucent door left and 15"-wide translucent door right (3), or 20"-high dual-access module with bookcase left and 15"-wide door right (C)</i>		
A	20"-high module with 9"-wide door left and 15"-wide door right	+\$570
3	20"-high module with 9"-wide translucent door left and 15"-wide translucent door right A	+\$1133
C	20"-high dual-access module with bookcase left and 15"-wide door right	+\$631
E	20"-high dual-access module with bookcase left and 15"-wide display/pullout shelf right	+\$727
T	20"-high open shelf	+\$388
<i>For 24" wide (2.1) with 20"-high module with 15"-wide door left and 9"-wide door right (B), 20"-high module with 15"-wide translucent door left and 9"-wide translucent door right (4), or 20"-high dual-access module with 15"-wide door left and bookcase right (D)</i>		
B	20"-high module with 15"-wide door left and 9"-wide door right	+\$570
4	20"-high module with 15"-wide translucent door left and 9"-wide translucent door right A	+\$1133
D	20"-high dual-access module with 15"-wide door left and bookcase right	+\$631
F	20"-high dual-access module with 15"-wide display/pullout shelf left and bookcase right	+\$727
T	20"-high open shelf	+\$388
Step 5. Bottom Module Configuration		
<i>For 30" wide (3.1)</i>		
M	file/file	+\$880
N	door left, file/file right	+\$1230
P	file/file left, door right	+\$1230
R	door left, box/box/file right	+\$1272
S	box/box/file left, door right	+\$1272
<i>For 24" wide (2.1) with combinations of configurations A, C, E, T, or 3</i>		
M	file/file	+\$848
N	door left, file/file right	+\$1200
R	door left, box/box/file right	+\$1242
<i>For 24" wide (2.1) with combinations of configurations B, D, F, T, or 4</i>		
M	file/file	+\$848
P	file/file left, door right	+\$1200
S	box/box/file left, door right	+\$1242

Stackable Storage™ Cabinet, 3 Modules High, Standard Pull

continued

Step 6. Paint/Steel Type		
SS	smooth paint on smooth steel	+\$0
TS	smooth paint on textured steel	+\$0
XS	textured paint on smooth steel	+\$0

Step 7. Surface Finish		
<i>For smooth paint on smooth steel (SS) or smooth paint on textured steel (TS)</i>		
	Nonmetallic Paint	+\$0
	Metallic Paint	+\$150

Sand Texture Paint		
<i>For textured paint on smooth steel (XS)</i>		
7L	dune	+\$0
7M	chai	+\$0
7N	grass	+\$0
7U	blue ridge	+\$0
7V	loden	+\$0
7W	napa	+\$0
7Y	sedona	+\$0
7Z	mink	+\$0
8T	gull	+\$0
8Y	moonbeam	+\$0
B4	blue medium	+\$0
ZK	cappuccino	+\$0

Bright Sand Texture Paint		
<i>For textured paint on smooth steel (XS)</i>		
91	white	+\$0
CL	cool grey neutral	+\$0
G1	graphite	+\$0
WN	warm grey neutral	+\$0

Step 8. Top			
		2.1	3.1
NT	no top	+\$0	0
T1	1"-high painted metal top with squared edge	+\$0	0
T2	1/4"-high painted metal top with squared edge	+\$0	0
J3	1/4"-high cathedral recut veneer top A	+\$204	224
TF	1/4"-high wood veneer top A	+\$210	231
D1	6 1/2"-high full dome, side-to-side	+\$210	231
D2	6 1/2"-high full dome, front-to-back	+\$210	231
H1	6 1/2"-high half dome, sloping left	+\$210	231
H2	6 1/2"-high half dome, sloping right	+\$210	231
H3	6 1/2"-high half dome, sloping front	+\$210	231
H4	6 1/2"-high half dome, sloping back	+\$210	231
TV1	1 1/8"-high wood veneer top and wood composite edge with oversail front A	+\$315	315

Step 9. Veneer Top Finish			
Recut Veneer			
<i>For 1 1/4"-high cathedral recut veneer top (J3)</i>			
DU	cathedral recut natural maple A		+\$0
HU	cathedral recut light anigre A		+\$0
JU	cathedral recut aged cherry A		+\$0
VU	cathedral recut light brown walnut A		+\$0
WU	cathedral recut walnut on cherry A		+\$0
XU	cathedral recut medium red cherry A		+\$0
ZU	cathedral recut chocolate brown sapele A		+\$0

Wood Veneer			
<i>For 1 1/4"-high wood veneer top (TF)</i>			
V3	cherry A		+\$18
Z3	warm red cherry A		+\$18
Z5	maple A		+\$18
2U	light brown walnut A		+\$24
3U	medium red cherry A		+\$24
6U	chocolate brown sapele A		+\$24
ED	aged cherry A		+\$24
EG	medium brown walnut A		+\$24
EK	medium red walnut A		+\$24
EY	light anigre A		+\$24
UL	natural maple A		+\$24
UQ	light cherry A		+\$24
UV	red cherry A		+\$24
UX	walnut on cherry A		+\$24

Meridian® Stackable Storage™ Cabinets

Stackable Storage™ Cabinet, 3 Modules High, Standard Pull

continued

Meridian® Stackable Storage™ Cabinets

Wood Veneer
For 1¹/₈"-high wood veneer top and wood composite edge with oversail
front (TV1)

ED	aged cherry <input type="checkbox"/> A	+\$24
EG	medium brown walnut <input type="checkbox"/> A	+\$24
EK	medium red walnut <input type="checkbox"/> A	+\$24
EY	light anigre <input type="checkbox"/> A	+\$24
UL	natural maple <input type="checkbox"/> A	+\$24
UQ	light cherry <input type="checkbox"/> A	+\$24
UV	red cherry <input type="checkbox"/> A	+\$24
UX	walnut on cherry <input type="checkbox"/> A	+\$24

Step 10. Lock

KA	keyed alike	+\$0
KC	keyed differently, chrome	+\$0
KD	keyed differently, black	+\$0

Step 11. Base Height

B1	1"-high base	+\$0
B2	1 ¹ / ₂ "-high base	+\$0
B3	2 ¹ / ₄ "-high base	+\$0
B4	3 ¹ / ₄ "-high base	+\$0
B5	4 ¹ / ₄ "-high base	+\$32

Step 12. Translucent Finish

For all translucent door modules (3, 4, 5, or 6)

FS	frosted <input type="checkbox"/> A	+\$0
TR	clear <input type="checkbox"/> A	+\$0

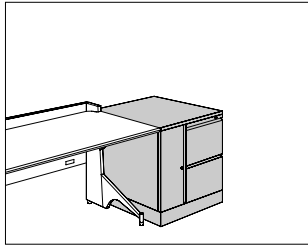
Step 13. Cable Management Channel

For file/file (M)

NC	no cable management channel	+\$0
CC	cable management channel	+\$69

Stackable Storage™ Cabinet, 1
Module High, Bevel Pull

MS142.
MS143.



Product Information

Description

This 24^{5/8}" freestanding storage cabinet has 1 module with a variety of configurations and bevel pulls. Doors and drawers are available in smooth or textured steel. The cabinet's top is available in metal or veneer. 5 base heights are available; all bases include adjustable glides. A counterweight is included.

The bottom module's file/file drawer configuration includes a side-to-side filing rail in the 24"-wide file drawer and front-to-back filing rails in the 30"-wide file drawer. The box/box/file configuration includes an adjustable metal divider in each box drawer and a file compressor in each file drawer. All drawers are controlled by 1 lock. The briefcase storage area locks with a slide bar secured behind the locking drawers.

Notes

For examples of stackable modules, see Sample Stackable Storage™ Cabinet Configurations in Appendices.

Front-facing filing module is the reference point when specifying orientation for full- or half-dome top or oversail veneer top.

To pass cables through bottom module (M), specify cable management channel (CC). Order pass-through harness (PG330.) separately.

To convert filing direction in file/file drawer configuration, order 1 of the following products separately:

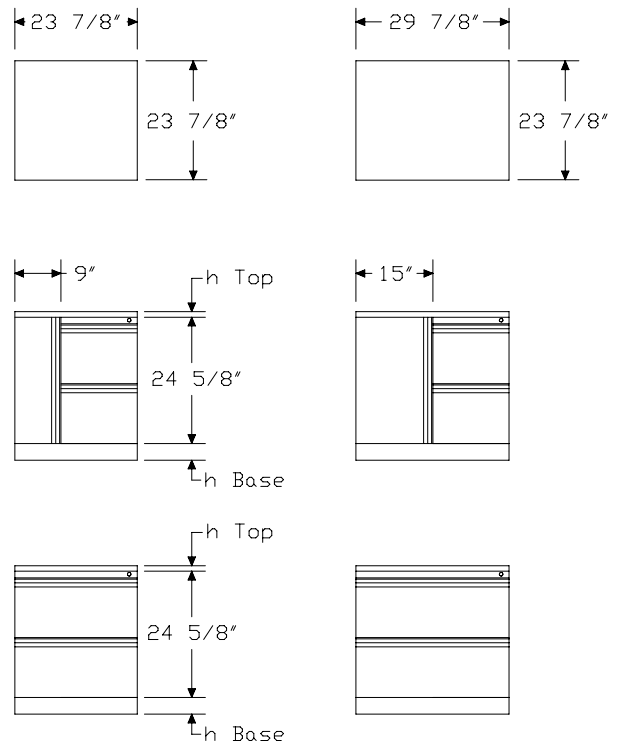
- Front-to-back filing rail (9P002)
- Side-to-side filing rail (9R130)

Order optional accessories separately:

- Drawer divider (73-1567-D)
- File drawer organizer (73-9874-FDO)
- File drawer organizer (LG901)
- Pencil tray (73-1516-PT)
- Stationery tray (73-7082-SST)

For keyed-alike locks, order lock plugs separately. See Keyed-Alike Information in Appendices.

Dimensions



Stackable Storage™ Cabinet, 1
Module High, Bevel Pull *continued*

Specification Information

Step 1.

MS14

Step 2. Width

- 2. 24" wide
- 3. 30" wide

Step 3. Configuration

- M** file/file
- N** door left, file/file right
- P** file/file left, door right
- R** door left, box/box/file right
- S** box/box/file left, door right

Prices for Steps 1-3.

MS142.M	\$848
N	\$1200
P	\$1200
R	\$1242
S	\$1242

MS143.M \$880

N	\$1230
P	\$1230
R	\$1272
S	\$1272

Step 4. Paint/Steel Type

SS smooth paint on smooth steel	+\$0
TS smooth paint on textured steel	+\$0
XS textured paint on smooth steel	+\$0

Step 5. Surface Finish

For smooth paint on smooth steel (SS) or smooth paint on textured steel (TS)

Nonmetallic Paint	+\$0
Metallic Paint	+\$50

Sand Texture Paint

For textured paint on smooth steel (XS)

7L dune	+\$0
7M chai	+\$0
7N grass	+\$0
7U blue ridge	+\$0
7V loden	+\$0
7W napa	+\$0
7Y sedona	+\$0
7Z mink	+\$0
8T gull	+\$0
8Y moonbeam	+\$0
B4 blue medium	+\$0
ZK cappuccino	+\$0

Bright Sand Texture Paint

For textured paint on smooth steel (XS)

91 white	+\$0
CL cool grey neutral	+\$0
G1 graphite	+\$0
WN warm grey neutral	+\$0

Step 6. Top

	2.	3.
NT no top	+\$0	0
T1 1"-high painted metal top with squared edge	+\$0	0
T2 1 1/4"-high painted metal top with squared edge	+\$0	0
J3 1 1/4"-high cathedral recut veneer top A	+\$204	224
TF 1 1/4"-high wood veneer top A	+\$210	231
D1 6 1/2"-high full dome, side-to-side	+\$210	231
D2 6 1/2"-high full dome, front-to-back	+\$210	231
H1 6 1/2"-high half dome, sloping left	+\$210	231
H2 6 1/2"-high half dome, sloping right	+\$210	231
H3 6 1/2"-high half dome, sloping front	+\$210	231
H4 6 1/2"-high half dome, sloping back	+\$210	231
TV1 1 1/8"-high wood veneer top and wood composite edge with oversail front A	+\$315	315

Stackable Storage™ Cabinet, 1 Module High, Bevel Pull *continued*

Step 7. Veneer Top Finish

Recut Veneer

For 1 1/4"-high cathedral recut veneer top (J3)

DU	cathedral recut natural maple <input type="checkbox"/>	+\$0
HU	cathedral recut light anigre <input type="checkbox"/>	+\$0
JU	cathedral recut aged cherry <input type="checkbox"/>	+\$0
VU	cathedral recut light brown walnut <input type="checkbox"/>	+\$0
WU	cathedral recut walnut on cherry <input type="checkbox"/>	+\$0
XU	cathedral recut medium red cherry <input type="checkbox"/>	+\$0
ZU	cathedral recut chocolate brown sapele <input type="checkbox"/>	+\$0

Wood Veneer

For 1 1/4"-high wood veneer top (TF)

V3	cherry <input type="checkbox"/>	+\$18
Z3	warm red cherry <input type="checkbox"/>	+\$18
Z5	maple <input type="checkbox"/>	+\$18
2U	light brown walnut <input type="checkbox"/>	+\$24
3U	medium red cherry <input type="checkbox"/>	+\$24
6U	chocolate brown sapele <input type="checkbox"/>	+\$24
ED	aged cherry <input type="checkbox"/>	+\$24
EG	medium brown walnut <input type="checkbox"/>	+\$24
EK	medium red walnut <input type="checkbox"/>	+\$24
EY	light anigre <input type="checkbox"/>	+\$24
UL	natural maple <input type="checkbox"/>	+\$24
UQ	light cherry <input type="checkbox"/>	+\$24
UV	red cherry <input type="checkbox"/>	+\$24
UX	walnut on cherry <input type="checkbox"/>	+\$24

Wood Veneer

For 1 1/8"-high wood veneer top and wood composite edge with oversail front (TV1)

ED	aged cherry <input type="checkbox"/>	+\$24
EG	medium brown walnut <input type="checkbox"/>	+\$24
EK	medium red walnut <input type="checkbox"/>	+\$24
EY	light anigre <input type="checkbox"/>	+\$24
UL	natural maple <input type="checkbox"/>	+\$24
UQ	light cherry <input type="checkbox"/>	+\$24
UV	red cherry <input type="checkbox"/>	+\$24
UX	walnut on cherry <input type="checkbox"/>	+\$24

Step 8. Lock

KA	keyed alike	+\$0
KC	keyed differently, chrome	+\$0
KD	keyed differently, black	+\$0

Step 9. Base Height

B1	1"-high base	+\$0
B2	1 1/2"-high base	+\$0
B3	2 1/4"-high base	+\$0
B4	3 1/4"-high base	+\$0
B5	4 1/4"-high base	+\$32

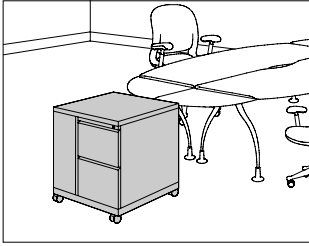
Step 10. Cable Management Channel

For file/file (M)

NC	no cable management channel	+\$0
CC	cable management channel	+\$69

Mobile Stackable Storage™
Cabinet, 1 Module High, Bevel
Pull

MS1C42
MS1C43



Product Information

Description

This 29^{5/8}"-high mobile storage cabinet has 1 module with a variety of configurations and bevel pulls. Doors and drawers are available in smooth or textured steel. The cabinet's top is available in metal or veneer. The 5^{1/2}"-high caster base includes a 1^{1/2}"-high metal frame and 4 4"-diameter casters; 2 casters include a brake. A counterweight is included.

The bottom module's file/file drawer configuration includes a side-to-side filing rail in the 24"-wide file drawer and front-to-back filing rails in the 30"-wide file drawer. The box/box/file configuration includes an adjustable metal divider in each box drawer and a file compressor in each file drawer. All drawers are controlled by 1 lock. The briefcase storage area locks with a slide bar secured behind the locking drawers.

Notes

For examples of stackable modules, see Sample Stackable Storage™ Cabinet Configurations in Appendices.

Front-facing filing module is the reference point when specifying orientation for full- or half-dome top or oversail veneer top.

Casters must be field installed.

Cables cannot be routed through mobile cabinets.

To convert filing direction in file/file drawer configuration, order 1 of the following products separately:

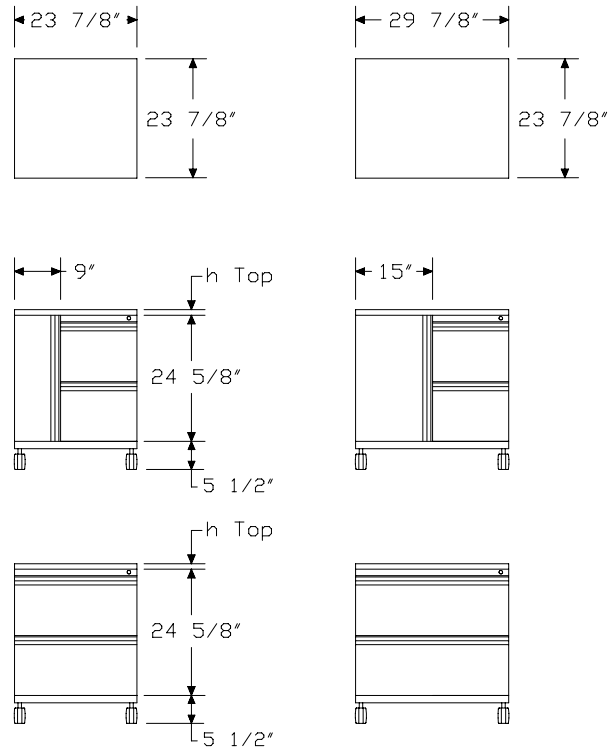
- Front-to-back filing rail (9P002)
- Side-to-side filing rail (9R130)

Order optional accessories separately:

- Drawer divider (73-1567-D)
- File drawer organizer (73-9874-FDO)
- File drawer organizer (LG901)
- Pencil tray (73-1516-PT)
- Stationery tray (73-7082-SST)

For keyed-alike locks, order lock plugs separately. See Keyed-Alike Information in Appendices.

Dimensions



Mobile Stackable Storage™
Cabinet, 1 Module High, Bevel
Pull *continued*

Specification Information

Step 1.

MS1C4

Step 2. Width

- 2. 24" wide
- 3. 30" wide

Step 3. Configuration

- M** file/file
- N** door left, file/file right
- P** file/file left, door right
- R** door left, box/box/file right
- S** box/box/file left, door right

Prices for Steps 1-3.

MS1C42. M	\$1030
N	\$1381
P	\$1381
R	\$1423
S	\$1423

MS1C43. M

M	\$1060
N	\$1412
P	\$1412
R	\$1452
S	\$1452

Step 4. Paint/Steel Type

SS smooth paint on smooth steel	+\$0
TS smooth paint on textured steel	+\$0
XS textured paint on smooth steel	+\$0

Step 5. Surface Finish

For smooth paint on smooth steel (SS) or smooth paint on textured steel (TS)

Nonmetallic Paint	+\$0
Metallic Paint	+\$50

Sand Texture Paint

For textured paint on smooth steel (XS)

7L dune	+\$0
7M chai	+\$0
7N grass	+\$0
7U blue ridge	+\$0
7V loden	+\$0
7W napa	+\$0
7Y sedona	+\$0
7Z mink	+\$0
8T gull	+\$0
8Y moonbeam	+\$0
B4 blue medium	+\$0
ZK cappuccino	+\$0

Bright Sand Texture Paint

For textured paint on smooth steel (XS)

91 white	+\$0
CL cool grey neutral	+\$0
G1 graphite	+\$0
WN warm grey neutral	+\$0

Step 6. Top

		2.	3.
NT no top		+\$0	0
T1 1"-high painted metal top with squared edge		+\$0	0
T2 1¼"-high painted metal top with squared edge		+\$0	0
J3 1¼"-high cathedral recut veneer top A		+\$204	224
TF 1¼"-high wood veneer top A		+\$210	231
D1 6½"-high full dome, side-to-side		+\$210	231
D2 6½"-high full dome, front-to-back		+\$210	231
H1 6½"-high half dome, sloping left		+\$210	231
H2 6½"-high half dome, sloping right		+\$210	231
H3 6½"-high half dome, sloping front		+\$210	231
H4 6½"-high half dome, sloping back		+\$210	231
TV1 1⅝"-high wood veneer top and wood composite edge with oversail front A		+\$315	315

Mobile Stackable Storage™ Cabinet, 1 Module High, Bevel Pull *continued*

Step 7. Veneer Top Finish

Recut Veneer

For 1¼"-high cathedral recut veneer top (J3)

DU	cathedral recut natural maple <input type="checkbox"/> A	+\$0
HU	cathedral recut light anigre <input type="checkbox"/> A	+\$0
JU	cathedral recut aged cherry <input type="checkbox"/> A	+\$0
VU	cathedral recut light brown walnut <input type="checkbox"/> A	+\$0
WU	cathedral recut walnut on cherry <input type="checkbox"/> A	+\$0
XU	cathedral recut medium red cherry <input type="checkbox"/> A	+\$0
ZU	cathedral recut chocolate brown sapele <input type="checkbox"/> A	+\$0

Wood Veneer

For 1¼"-high wood veneer top (TF)

V3	cherry <input type="checkbox"/> A	+\$18
Z3	warm red cherry <input type="checkbox"/> A	+\$18
Z5	maple <input type="checkbox"/> A	+\$18
2U	light brown walnut <input type="checkbox"/> A	+\$24
3U	medium red cherry <input type="checkbox"/> A	+\$24
6U	chocolate brown sapele <input type="checkbox"/> A	+\$24
ED	aged cherry <input type="checkbox"/> A	+\$24
EG	medium brown walnut <input type="checkbox"/> A	+\$24
EK	medium red walnut <input type="checkbox"/> A	+\$24
EY	light anigre <input type="checkbox"/> A	+\$24
UL	natural maple <input type="checkbox"/> A	+\$24
UQ	light cherry <input type="checkbox"/> A	+\$24
UV	red cherry <input type="checkbox"/> A	+\$24
UX	walnut on cherry <input type="checkbox"/> A	+\$24

Wood Veneer

For 1⅝"-high wood veneer top and wood composite edge with oversail front (TV1)

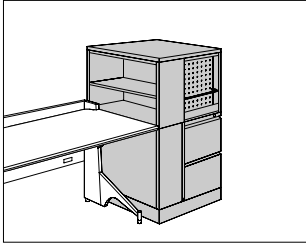
ED	aged cherry <input type="checkbox"/> A	+\$24
EG	medium brown walnut <input type="checkbox"/> A	+\$24
EK	medium red walnut <input type="checkbox"/> A	+\$24
EY	light anigre <input type="checkbox"/> A	+\$24
UL	natural maple <input type="checkbox"/> A	+\$24
UQ	light cherry <input type="checkbox"/> A	+\$24
UV	red cherry <input type="checkbox"/> A	+\$24
UX	walnut on cherry <input type="checkbox"/> A	+\$24

Step 8. Lock

KA	keyed alike	+\$0
KC	keyed differently, chrome	+\$0
KD	keyed differently, black	+\$0

Stackable Storage™ Cabinet, 2
Modules High, Bevel Pull

MS242.
MS243.



Product Information

Description

This freestanding storage cabinet has 2 modules with a variety of configurations to store or display project materials, binders and books, printers, fax machines, and personal items. It includes a 24⁵/₈"-high bottom module and a 20"- or 49"-high top module. Each module is configured separately. The cabinet has bevel pulls. Doors and drawers are available in smooth or textured steel. Translucent doors are available on select top modules; they do not lock. Translucent doors have a painted aluminum frame with brushed aluminum sloped pulls (U1). The cabinet's top is available in metal or veneer. 5 base heights are available; all bases include adjustable glides.

The bottom module's file/file drawer configuration includes a side-to-side filing rail in the 24"-wide file drawer and front-to-back filing rails in the 30"-wide file drawer. The box/box/file configuration includes an adjustable metal divider in each box drawer and a file compressor in each file drawer. All drawers are controlled by 1 lock. The briefcase storage area locks with a slide bar secured behind the locking drawers.

The top module interiors include the following:

Component—Interior

- Bookcase—1 adjustable shelf
- 20"-High Storage Case—1 adjustable shelf
- 49"-High Storage Case—2 adjustable shelves
- Pullout Shelf—1 hanging file frame and 1 divider
- 49"-High Wardrobe—1 side-to-side coat rod

Notes

For examples of stackable modules, see Sample Stackable Storage™ Cabinet Configurations in Appendices.

Front-facing filing module is the reference point when specifying orientation for full- or half-dome top or oversail veneer top.

For doors specified on 24"-wide top and bottom modules, 9"-wide doors must align on same side of cabinet.

To pass cables through bottom module (M), specify cable management channel (CC). Order pass-through harness (PG330.) separately.

To convert filing direction in file/file drawer configuration, order 1 of the following products separately:

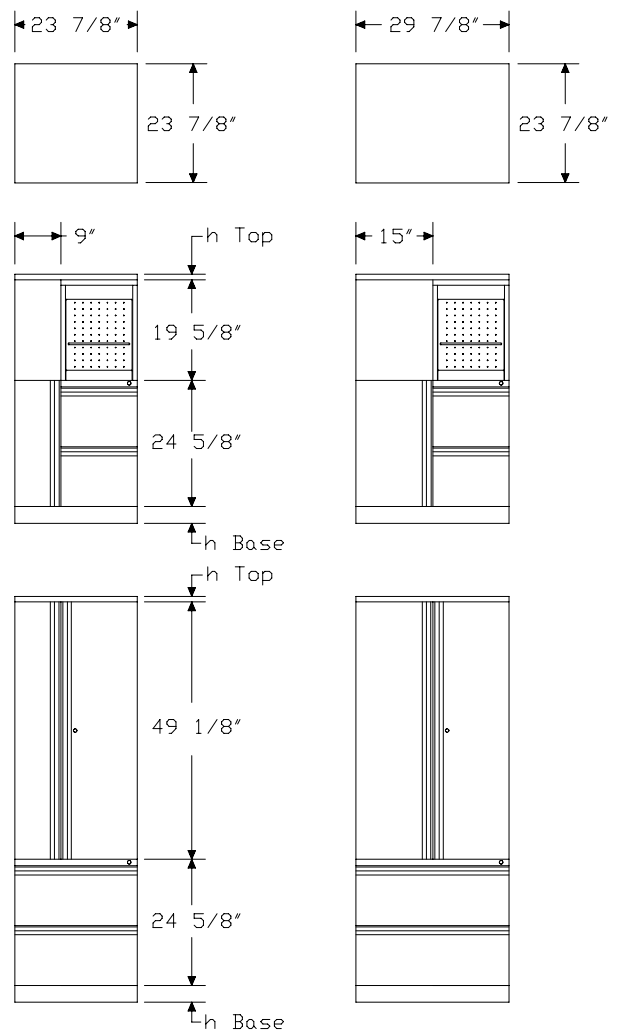
- Front-to-back filing rail (9P002)
- Side-to-side filing rail (9R130)

Order optional accessories separately:

- Adjustable shelf (MSAS)
- Binder backstop divider (4B-BD)
- Drawer divider (73-1567-D)
- File drawer organizer (73-9874-FDO)
- File drawer organizer (LG901)
- Pencil tray (73-1516-PT)
- Stationery tray (73-7082-SST)

For keyed-alike locks, order lock plugs separately. See Keyed-Alike Information in Appendices.

Dimensions



Stackable Storage™ Cabinet, 2
 Modules High, Bevel Pull *continued*

Specification Information		
Step 1.		
MS24		
Step 2. Width		
2.1	24" wide	\$0
3.1	30" wide	\$0
Step 3. Top Module Configuration		
<i>For 24" wide (2.1)</i>		
A	20"-high module with 9"-wide door left and 15"-wide door right	+\$570
3	20"-high module with 9"-wide translucent door left and 15"-wide translucent door right A	+\$1133
B	20"-high module with 15"-wide door left and 9"-wide door right	+\$570
4	20"-high module with 15"-wide translucent door left and 9"-wide translucent door right A	+\$1133
C	20"-high dual-access module with bookcase left and 15"-wide door right	+\$631
D	20"-high dual-access module with 15"-wide door left and bookcase right	+\$631
E	20"-high dual-access module with bookcase left and 15"-wide display/pullout shelf right	+\$727
F	20"-high dual-access module with 15"-wide display/pullout shelf left and bookcase right	+\$727
T	20"-high open shelf	+\$388
K	49"-high module with 9"-wide door left and 15"-wide door right	+\$862
L	49"-high module with 15"-wide door left and 9"-wide door right	+\$862
H	49"-high module with 9"-wide wardrobe left and 15"-wide door right	+\$982
J	49"-high module with 15"-wide door left and 9"-wide wardrobe right	+\$982

<i>For 30" wide (3.1)</i>		
A	20"-high module with doors	+\$601
3	20"-high module with translucent doors A	+\$1164
C	20" high dual-access module with bookcase left and door right	+\$662
D	20" high dual-access module with door left and bookcase right	+\$662
E	20" high dual-access module with bookcase left and display/pullout shelf	+\$758
F	20" high dual-access module with display/pullout shelf left and bookcase right	+\$758
T	20"-high open shelf	+\$421
K	49"-high module with doors	+\$921
H	49"-high module with wardrobe left and door right	+\$1043
J	49"-high module with door left and wardrobe right	+\$1043

Step 4. Bottom Module Configuration		
<i>For 30" wide (3.1)</i>		
M	file/file	+\$880
N	door left, file/file right	+\$1230
P	file/file left, door right	+\$1230
R	door left, box/box/file right	+\$1272
S	box/box/file left, door right	+\$1272

<i>For 24" wide (2.1) with 20"-high module with 9"-wide door left and 15"-wide door right (A), 20"-high module with 9"-wide translucent door left and 15"-wide translucent door right (3), 20"-high dual-access module with bookcase left and 15"-wide door right (C), 20"-high dual-access module with bookcase left and 15"-wide display/pullout shelf right (E), 49"-high module with 9"-wide door left and 15"-wide door right (K), or 49"-high module with 9"-wide wardrobe left and 15"-wide door right (H)</i>		
M	file/file	+\$848
N	door left, file/file right	+\$1200
R	door left, box/box/file right	+\$1242

<i>For 24" wide (2.1) with 20"-high module with 15"-wide door left and 9"-wide door right (B), 20"-high module with 15"-wide translucent door left and 9"-wide translucent door right (4), 20"-high dual-access module with 15"-wide door left and bookcase right (D), 20"-high dual-access module with 15"-wide display/pullout shelf left and bookcase right (F), 49"-high module with 15"-wide door left and 9"-wide door right (L), or 49"-high module with 15"-wide door left and 9"-wide wardrobe right (J)</i>		
M	file/file	+\$848
P	file/file left, door right	+\$1200
S	box/box/file left, door right	+\$1242

Stackable Storage™ Cabinet, 2 Modules High, Bevel Pull *continued*

For 24" wide (2.1) with 20"-high open shelf (T)

M	file/file	+\$848
N	door left, file/file right	+\$1200
P	file/file left, door right	+\$1200
R	door left, box/box/file right	+\$1242
S	box/box/file left, door right	+\$1242

Step 5. Paint/Steel Type

SS	smooth paint on smooth steel	+\$0
TS	smooth paint on textured steel	+\$0
XS	textured paint on smooth steel	+\$0

Step 6. Surface Finish

For smooth paint on smooth steel (SS) or smooth paint on textured steel (TS)

Nonmetallic Paint	+\$0
Metallic Paint	+\$100

Sand Texture Paint

For textured paint on smooth steel (XS)

7L	dune	+\$0
7M	chai	+\$0
7N	grass	+\$0
7U	blue ridge	+\$0
7V	loden	+\$0
7W	napa	+\$0
7Y	sedona	+\$0
7Z	mink	+\$0
8T	gull	+\$0
8Y	moonbeam	+\$0
B4	blue medium	+\$0
ZK	cappuccino	+\$0

Bright Sand Texture Paint

For textured paint on smooth steel (XS)

91	white	+\$0
CL	cool grey neutral	+\$0
G1	graphite	+\$0
WN	warm grey neutral	+\$0

Step 7. Top

		2.1	3.1
NT	no top	+\$0	0
T1	1"-high painted metal top with squared edge	+\$0	0
T2	1/4"-high painted metal top with squared edge	+\$0	0
J3	1/4"-high cathedral recut veneer top A	+\$204	224
TF	1/4"-high wood veneer top A	+\$210	231
D1	6 1/2"-high full dome, side-to-side	+\$210	231
D2	6 1/2"-high full dome, front-to-back	+\$210	231
H1	6 1/2"-high half dome, sloping left	+\$210	231
H2	6 1/2"-high half dome, sloping right	+\$210	231
H3	6 1/2"-high half dome, sloping front	+\$210	231
H4	6 1/2"-high half dome, sloping back	+\$210	231
TV1	1 1/8"-high wood veneer top and wood composite edge with oversail front A	+\$315	315

Step 8. Veneer Top Finish

Recut Veneer

For 1 1/4"-high cathedral recut veneer top (J3)

DU	cathedral recut natural maple A	+\$0
HU	cathedral recut light anigre A	+\$0
JU	cathedral recut aged cherry A	+\$0
VU	cathedral recut light brown walnut A	+\$0
WU	cathedral recut walnut on cherry A	+\$0
XU	cathedral recut medium red cherry A	+\$0
ZU	cathedral recut chocolate brown sapele A	+\$0

Wood Veneer

For 1 1/4"-high wood veneer top (TF)

V3	cherry A	+\$18
Z3	warm red cherry A	+\$18
Z5	maple A	+\$18
2U	light brown walnut A	+\$24
3U	medium red cherry A	+\$24
6U	chocolate brown sapele A	+\$24
ED	aged cherry A	+\$24
EG	medium brown walnut A	+\$24
EK	medium red walnut A	+\$24
EY	light anigre A	+\$24
UL	natural maple A	+\$24
UQ	light cherry A	+\$24
UV	red cherry A	+\$24
UX	walnut on cherry A	+\$24

Stackable Storage™ Cabinet, 2 Modules High, Bevel Pull *continued*

Wood Veneer

For 1¹/₈"-high wood veneer top and wood composite edge with oversail front (TV1)

ED	aged cherry <input type="checkbox"/> A	+\$24
EG	medium brown walnut <input type="checkbox"/> A	+\$24
EK	medium red walnut <input type="checkbox"/> A	+\$24
EY	light anigre <input type="checkbox"/> A	+\$24
UL	natural maple <input type="checkbox"/> A	+\$24
UQ	light cherry <input type="checkbox"/> A	+\$24
UV	red cherry <input type="checkbox"/> A	+\$24
UX	walnut on cherry <input type="checkbox"/> A	+\$24

Step 9. Lock

KA	keyed alike	+\$0
KC	keyed differently, chrome	+\$0
KD	keyed differently, black	+\$0

Step 10. Base Height

B1	1"-high base	+\$0
B2	1 ¹ / ₂ "-high base	+\$0
B3	2 ¹ / ₄ "-high base	+\$0
B4	3 ¹ / ₄ "-high base	+\$0
B5	4 ¹ / ₄ "-high base	+\$32

Step 11. Translucent Finish

For 20"-high module with 9"-wide translucent door left and 15"-wide translucent door right (3), 20"-high module with translucent doors (3), or 20"-high module with 15"-wide translucent door left and 9"-wide translucent door right (4)

FS	frosted <input type="checkbox"/> A	+\$0
TR	clear <input type="checkbox"/> A	+\$0

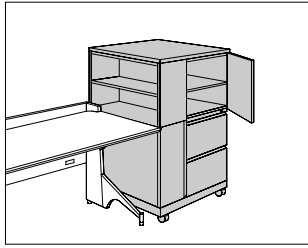
Step 12. Cable Management Channel

For file/file (M)

NC	no cable management channel	+\$0
CC	cable management channel	+\$69

Mobile Stackable Storage™
Cabinet, 2 Modules High, Bevel
Pull

MS2C42
MS2C43



Product Information

Description

This mobile storage cabinet has 2 modules with a variety of configurations to store or display project materials, binders and books, printers, fax machines, and personal items. It includes a 29⁵/₈"-high bottom module and a 20"-high top module. Each module is configured separately. The cabinet has bevel pulls. Doors and drawers are available in smooth or textured steel. Translucent doors are available on select top modules; they do not lock. Translucent doors have a painted aluminum frame with brushed aluminum sloped pulls (U1). The cabinet's top is available in metal or veneer.

The bottom module's file/file drawer configuration includes a side-to-side filing rail in the 24"-wide file drawer and front-to-back filing rails in the 30"-wide file drawer. The box/box/file configuration includes an adjustable metal divider in each box drawer and a file compressor in each file drawer. All drawers are controlled by 1 lock. The briefcase storage area locks with a slide bar secured behind the locking drawers. The 5¹/₂"-high caster base includes a 1¹/₂"-high metal frame and 4 4"-diameter casters; 2 casters include a brake. A counterweight is included.

The top module interiors include the following:

Component—Interior

Bookcase—1 adjustable shelf

20"-High Storage Case—1 adjustable shelf

Notes

For examples of stackable modules, see Sample Stackable Storage™ Cabinet Configurations in Appendices.

Front-facing filing module is the reference point when specifying orientation for full- or half-dome top or oversail veneer top.

Casters must be field installed.

For doors specified on 24"-wide top and bottom modules, 9"-wide doors must align on same side of cabinet.

Cables cannot be routed through mobile cabinets.

To convert filing direction in file/file drawer configuration, order 1 of the following products separately:

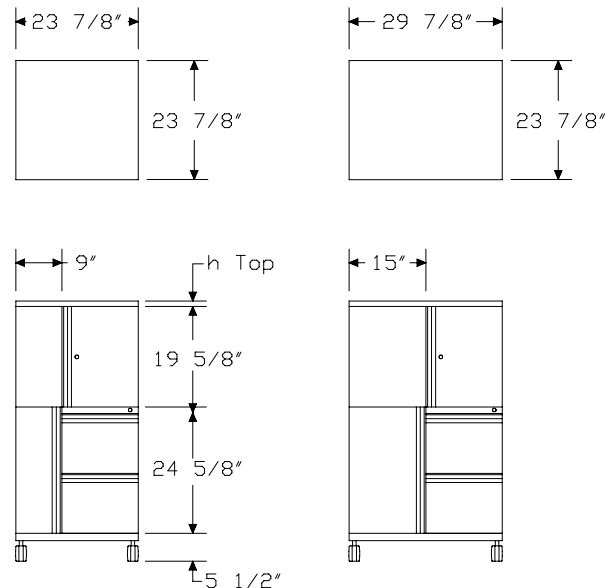
- Front-to-back filing rail (9P002)
- Side-to-side filing rail (9R130)

Order optional accessories separately:

- Adjustable shelf (MSAS)
- Drawer divider (73-1567-D)
- File drawer organizer (73-9874-FDO)
- File drawer organizer (LG901)
- Pencil tray (73-1516-PT)
- Stationery tray (73-7082-SST)

For keyed-alike locks, order lock plugs separately. See Keyed-Alike Information in Appendices.

Dimensions



Mobile Stackable Storage™
Cabinet, 2 Modules High, Bevel
Pull *continued*

Specification Information

Step 1.

MS2C4

Step 2. Width

2.1	24" wide	\$0
3.1	30" wide	\$0

Step 3. Top Module Configuration

For 24" wide (2.1)

A	20"-high module with 9"-wide door left and 15"-wide door right	+\$570
3	20"-high module with 9"-wide translucent door left and 15"-wide translucent door right A	+\$1133
B	20"-high module with 15"-wide door left and 9"-wide door right	+\$570
4	20"-high module with 15"-wide translucent door left and 9"-wide translucent door right A	+\$1133
C	20"-high dual-access module with bookcase left and 15"-wide door right	+\$631
D	20"-high dual-access module with 15"-wide door left and bookcase right	+\$631
T	20"-high open shelf	+\$388

For 30" wide (3.1)

A	20"-high module with doors	+\$601
3	20"-high module with translucent doors A	+\$1164
C	20" high dual-access module with bookcase left and door right	+\$662
D	20" high dual-access module with door left and bookcase right	+\$662
T	20"-high open shelf	+\$421

Step 4. Bottom Module Configuration

For 30" wide (3.1)

M	file/file	+\$1060
N	door left, file/file right	+\$1412
P	file/file left, door right	+\$1412
R	door left, box/box/file right	+\$1452
S	box/box/file left, door right	+\$1452

For 24" wide (2.1) with 20"-high module with 9"-wide door left and 15"-wide door right (A), 20"-high module with 9"-wide translucent door left and 15"-wide translucent door right (3), or 20"-high dual-access module with bookcase left and 15"-wide door right (C)

M	file/file	+\$1030
N	door left, file/file right	+\$1381
R	door left, box/box/file right	+\$1423

For 24" wide (2.1) with 20"-high module with 15"-wide door left and 9"-wide door right (B), 20"-high module with 15"-wide translucent door left and 9"-wide translucent door right (4), or 20"-high dual-access module with 15"-wide door left and bookcase right (D)

M	file/file	+\$1030
P	file/file left, door right	+\$1381
S	box/box/file left, door right	+\$1423

For 24" wide (2.1) with 20"-high open shelf (T)

M	file/file	+\$1030
N	door left, file/file right	+\$1381
P	file/file left, door right	+\$1381
R	door left, box/box/file right	+\$1423
S	box/box/file left, door right	+\$1423

Step 5. Paint/Steel Type

SS	smooth paint on smooth steel	+\$0
TS	smooth paint on textured steel	+\$0
XS	textured paint on smooth steel	+\$0

Step 6. Surface Finish

For smooth paint on smooth steel (SS) or smooth paint on textured steel (TS)

Nonmetallic Paint	+\$0
Metallic Paint	+\$100

Mobile Stackable Storage™
Cabinet, 2 Modules High, Bevel
Pull *continued*

Sand Texture Paint		
<i>For textured paint on smooth steel (XS)</i>		
7L	dune	+\$0
7M	chai	+\$0
7N	grass	+\$0
7U	blue ridge	+\$0
7V	loden	+\$0
7W	napa	+\$0
7Y	sedona	+\$0
7Z	mink	+\$0
8T	gull	+\$0
8Y	moonbeam	+\$0
B4	blue medium	+\$0
ZK	cappuccino	+\$0

Bright Sand Texture Paint		
<i>For textured paint on smooth steel (XS)</i>		
91	white	+\$0
CL	cool grey neutral	+\$0
G1	graphite	+\$0
WN	warm grey neutral	+\$0

Step 7. Top			
		2.1	3.1
NT	no top	+\$0	0
T1	1"-high painted metal top with squared edge	+\$0	0
T2	1¼"-high painted metal top with squared edge	+\$0	0
J3	1¼"-high cathedral recut veneer top <input type="checkbox"/>	+\$204	224
TF	1¼"-high wood veneer top <input type="checkbox"/>	+\$210	231
D1	6½"-high full dome, side-to-side	+\$210	231
D2	6½"-high full dome, front-to-back	+\$210	231
H1	6½"-high half dome, sloping left	+\$210	231
H2	6½"-high half dome, sloping right	+\$210	231
H3	6½"-high half dome, sloping front	+\$210	231
H4	6½"-high half dome, sloping back	+\$210	231
TV1	1⅛"-high wood veneer top and wood composite edge with oversail front <input type="checkbox"/>	+\$315	315

Step 8. Veneer Top Finish		
Recut Veneer		
<i>For 1¼"-high cathedral recut veneer top (J3)</i>		
DU	cathedral recut natural maple <input type="checkbox"/>	+\$0
HU	cathedral recut light anigre <input type="checkbox"/>	+\$0
JU	cathedral recut aged cherry <input type="checkbox"/>	+\$0
VU	cathedral recut light brown walnut <input type="checkbox"/>	+\$0
WU	cathedral recut walnut on cherry <input type="checkbox"/>	+\$0
XU	cathedral recut medium red cherry <input type="checkbox"/>	+\$0
ZU	cathedral recut chocolate brown sapele <input type="checkbox"/>	+\$0

Wood Veneer		
<i>For 1¼"-high wood veneer top (TF)</i>		
V3	cherry <input type="checkbox"/>	+\$18
Z3	warm red cherry <input type="checkbox"/>	+\$18
Z5	maple <input type="checkbox"/>	+\$18
2U	light brown walnut <input type="checkbox"/>	+\$24
3U	medium red cherry <input type="checkbox"/>	+\$24
6U	chocolate brown sapele <input type="checkbox"/>	+\$24
ED	aged cherry <input type="checkbox"/>	+\$24
EG	medium brown walnut <input type="checkbox"/>	+\$24
EK	medium red walnut <input type="checkbox"/>	+\$24
EY	light anigre <input type="checkbox"/>	+\$24
UL	natural maple <input type="checkbox"/>	+\$24
UQ	light cherry <input type="checkbox"/>	+\$24
UV	red cherry <input type="checkbox"/>	+\$24
UX	walnut on cherry <input type="checkbox"/>	+\$24

Wood Veneer		
<i>For 1⅛"-high wood veneer top and wood composite edge with oversail front (TV1)</i>		
ED	aged cherry <input type="checkbox"/>	+\$24
EG	medium brown walnut <input type="checkbox"/>	+\$24
EK	medium red walnut <input type="checkbox"/>	+\$24
EY	light anigre <input type="checkbox"/>	+\$24
UL	natural maple <input type="checkbox"/>	+\$24
UQ	light cherry <input type="checkbox"/>	+\$24
UV	red cherry <input type="checkbox"/>	+\$24
UX	walnut on cherry <input type="checkbox"/>	+\$24

Step 9. Lock		
KA	keyed alike	+\$0
KC	keyed differently, chrome	+\$0
KD	keyed differently, black	+\$0

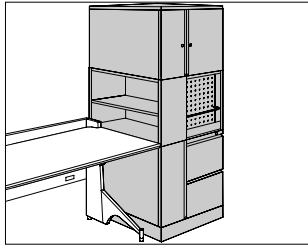
Mobile Stackable Storage™
 Cabinet, 2 Modules High, Bevel
 Pull *continued*

Meridian® Stackable Storage™ Cabinets

Step 10. Translucent Finish		
<i>For 20"-high module with 9"-wide translucent door left and 15"-wide translucent door right (3), 20"-high module with translucent doors (3), or 20"-high module with 15"-wide translucent door left and 9"-wide translucent door right (4)</i>		
FS	frosted <input type="checkbox"/> A	+\$0
TR	clear <input type="checkbox"/> A	+\$0

Stackable Storage™ Cabinet, 3
Modules High, Bevel Pull

MS342.
MS343.



Product Information

Description

This freestanding storage cabinet has 3 modules with a variety of configurations to store or display project materials, binders and books, printers, fax machines, and personal items. It includes a 24⁵/₈"-high bottom module, a 20"-high middle module, and a 20"-high top module. Each module is configured separately. The cabinet has bevel pulls. Doors and drawers are available in smooth or textured steel. Translucent doors are available on select top modules; they do not lock. Translucent doors have a painted aluminum frame with brushed aluminum sloped pulls (U1). The cabinet's top is available in metal or veneer. 5 base heights are available; all bases include adjustable glides. The bottom module's file/file drawer configuration includes a side-to-side filing rail in the 24"-wide file drawer and front-to-back filing rails in the 30"-wide file drawer. The box/box/file configuration includes an adjustable metal divider in each box drawer and a file compressor in each file drawer. All drawers are controlled by 1 lock. The briefcase storage area locks with a slide bar secured behind the locking drawers. The top and middle module interiors include the following:

Component—Interior

Bookcase—1 adjustable shelf

Storage Case—1 adjustable shelf

Pullout Shelf—1 hanging file frame and 1 divider

Notes

For examples of stackable modules, see Sample Stackable Storage™ Cabinet Configurations in Appendices.

Front-facing filing module is the reference point when specifying orientation for full- or half-dome top or oversail veneer top.

For doors specified on 24"-wide top and/or middle module and bottom module, 9"-wide doors must align on same side of cabinet.

To pass cables through bottom module (M), specify cable management channel (CC). Order pass-through harness (PG330.) separately.

To convert filing direction in file/file drawer configuration, order 1 of the following products separately:

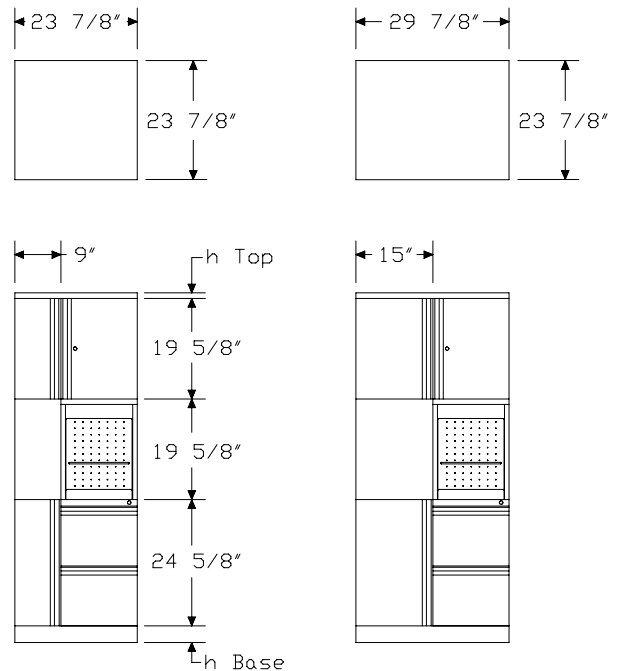
- Front-to-back filing rail (9P002)
- Side-to-side filing rail (9R130)

Order optional accessories separately:

- Adjustable shelf (MSAS)
- Binder backstop divider (4B-BD)
- Drawer divider (73-1567-D)
- File drawer organizer (73-9874-FDO)
- File drawer organizer (LG901)
- Pencil tray (73-1516-PT)
- Stationery tray (73-7082-SST)

For keyed-alike locks, order lock plugs separately. See Keyed-Alike Information in Appendices.

Dimensions



Stackable Storage™ Cabinet, 3 Modules High, Bevel Pull *continued*

Specification Information		
Step 1.		
MS34		
Step 2. Width		
2.1	24" wide	\$0
3.1	30" wide	\$0
Step 3. Top Module Configuration		
<i>For 24" wide (2.1)</i>		
A	20"-high module with 9"-wide door left and 15"-wide door right	+\$570
3	20"-high module with 9"-wide translucent door left and 15"-wide translucent door right A	+\$1133
B	20"-high module with 15"-wide door left and 9"-wide door right	+\$570
4	20"-high module with 15"-wide translucent door left and 9"-wide translucent door right A	+\$1133
C	20"-high dual-access module with bookcase left and 15"-wide door right	+\$631
D	20"-high dual-access module with 15"-wide door left and bookcase right	+\$631
<i>For 30" wide (3.1)</i>		
A	20"-high module with doors	+\$601
3	20"-high module with translucent doors A	+\$1164
C	20" high dual-access module with bookcase left and door right	+\$662
D	20" high dual-access module with door left and bookcase right	+\$662
Step 4. Middle Module Configuration		
<i>For 30" wide (3.1)</i>		
A	20"-high module with doors	+\$601
3	20"-high module with translucent doors A	+\$1164
C	20" high dual-access module with bookcase left and door right	+\$662
D	20" high dual-access module with door left and bookcase right	+\$662
E	20" high dual-access module with bookcase left and display/pullout shelf	+\$758
F	20" high dual-access module with display/pullout shelf left and bookcase right	+\$758
T	20"-high open shelf	+\$421

<i>For 24" wide (2.1) with 20"-high module with 9"-wide door left and 15"-wide door right (A), 20"-high module with 9"-wide translucent door left and 15"-wide translucent door right (3), or 20"-high dual-access module with bookcase left and 15"-wide door right (C)</i>		
A	20"-high module with 9"-wide door left and 15"-wide door right	+\$570
3	20"-high module with 9"-wide translucent door left and 15"-wide translucent door right A	+\$1133
C	20"-high dual-access module with bookcase left and 15"-wide door right	+\$631
E	20"-high dual-access module with bookcase left and 15"-wide display/pullout shelf right	+\$727
T	20"-high open shelf	+\$388
<i>For 24" wide (2.1) with 20"-high module with 15"-wide door left and 9"-wide door right (B), 20"-high module with 15"-wide translucent door left and 9"-wide translucent door right (4), or 20"-high dual-access module with 15"-wide door left and bookcase right (D)</i>		
B	20"-high module with 15"-wide door left and 9"-wide door right	+\$570
4	20"-high module with 15"-wide translucent door left and 9"-wide translucent door right A	+\$1133
D	20"-high dual-access module with 15"-wide door left and bookcase right	+\$631
F	20"-high dual-access module with 15"-wide display/pullout shelf left and bookcase right	+\$727
T	20"-high open shelf	+\$388
Step 5. Bottom Module Configuration		
<i>For 30" wide (3.1)</i>		
M	file/file	+\$880
N	door left, file/file right	+\$1230
P	file/file left, door right	+\$1230
R	door left, box/box/file right	+\$1272
S	box/box/file left, door right	+\$1272
<i>For 24" wide (2.1) with combinations of configurations A, C, E, T, or 3</i>		
M	file/file	+\$848
N	door left, file/file right	+\$1200
R	door left, box/box/file right	+\$1242
<i>For 24" wide (2.1) with combinations of configurations B, D, F, T, or 4</i>		
M	file/file	+\$848
P	file/file left, door right	+\$1200
S	box/box/file left, door right	+\$1242

Stackable Storage™ Cabinet, 3 Modules High, Bevel Pull *continued*

Step 6. Paint/Steel Type		
SS	smooth paint on smooth steel	+\$0
TS	smooth paint on textured steel	+\$0
XS	textured paint on smooth steel	+\$0

Step 7. Surface Finish		
<i>For smooth paint on smooth steel (SS) or smooth paint on textured steel (TS)</i>		
	Nonmetallic Paint	+\$0
	Metallic Paint	+\$150

Sand Texture Paint		
<i>For textured paint on smooth steel (XS)</i>		
7L	dune	+\$0
7M	chai	+\$0
7N	grass	+\$0
7U	blue ridge	+\$0
7V	loden	+\$0
7W	napa	+\$0
7Y	sedona	+\$0
7Z	mink	+\$0
8T	gull	+\$0
8Y	moonbeam	+\$0
B4	blue medium	+\$0
ZK	cappuccino	+\$0

Bright Sand Texture Paint		
<i>For textured paint on smooth steel (XS)</i>		
91	white	+\$0
CL	cool grey neutral	+\$0
G1	graphite	+\$0
WN	warm grey neutral	+\$0

Step 8. Top			
		2.1	3.1
NT	no top	+\$0	0
T1	1"-high painted metal top with squared edge	+\$0	0
T2	1/4"-high painted metal top with squared edge	+\$0	0
J3	1/4"-high cathedral recut veneer top A	+\$204	224
TF	1/4"-high wood veneer top A	+\$210	231
D1	6 1/2"-high full dome, side-to-side	+\$210	231
D2	6 1/2"-high full dome, front-to-back	+\$210	231
H1	6 1/2"-high half dome, sloping left	+\$210	231
H2	6 1/2"-high half dome, sloping right	+\$210	231
H3	6 1/2"-high half dome, sloping front	+\$210	231
H4	6 1/2"-high half dome, sloping back	+\$210	231
TV1	1 1/8"-high wood veneer top and wood composite edge with oversail front A	+\$315	315

Step 9. Veneer Top Finish			
Recut Veneer			
<i>For 1 1/4"-high cathedral recut veneer top (J3)</i>			
DU	cathedral recut natural maple A		+\$0
HU	cathedral recut light anigre A		+\$0
JU	cathedral recut aged cherry A		+\$0
VU	cathedral recut light brown walnut A		+\$0
WU	cathedral recut walnut on cherry A		+\$0
XU	cathedral recut medium red cherry A		+\$0
ZU	cathedral recut chocolate brown sapele A		+\$0

Wood Veneer			
<i>For 1 1/4"-high wood veneer top (TF)</i>			
V3	cherry A		+\$18
Z3	warm red cherry A		+\$18
Z5	maple A		+\$18
2U	light brown walnut A		+\$24
3U	medium red cherry A		+\$24
6U	chocolate brown sapele A		+\$24
ED	aged cherry A		+\$24
EG	medium brown walnut A		+\$24
EK	medium red walnut A		+\$24
EY	light anigre A		+\$24
UL	natural maple A		+\$24
UQ	light cherry A		+\$24
UV	red cherry A		+\$24
UX	walnut on cherry A		+\$24

Stackable Storage™ Cabinet, 3 Modules High, Bevel Pull *continued*

Wood Veneer

For 1¹/₈"-high wood veneer top and wood composite edge with oversail front (TV1)

ED	aged cherry <input type="checkbox"/> A	+\$24
EG	medium brown walnut <input type="checkbox"/> A	+\$24
EK	medium red walnut <input type="checkbox"/> A	+\$24
EY	light anigre <input type="checkbox"/> A	+\$24
UL	natural maple <input type="checkbox"/> A	+\$24
UQ	light cherry <input type="checkbox"/> A	+\$24
UV	red cherry <input type="checkbox"/> A	+\$24
UX	walnut on cherry <input type="checkbox"/> A	+\$24

Step 10. Lock

KA	keyed alike	+\$0
KC	keyed differently, chrome	+\$0
KD	keyed differently, black	+\$0

Step 11. Base Height

B1	1"-high base	+\$0
B2	1 ¹ / ₂ "-high base	+\$0
B3	2 ¹ / ₄ "-high base	+\$0
B4	3 ¹ / ₄ "-high base	+\$0
B5	4 ¹ / ₄ "-high base	+\$32

Step 12. Translucent Finish

For all translucent door modules (3, 4, 5, or 6)

FS	frosted <input type="checkbox"/> A	+\$0
TR	clear <input type="checkbox"/> A	+\$0

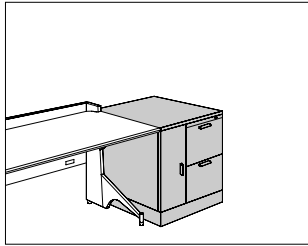
Step 13. Cable Management Channel

For file/file (M)

NC	no cable management channel	+\$0
CC	cable management channel	+\$69

Stackable Storage™ Cabinet, 1 Module High, Sloped Pull

MS1P2.
MS1P3.
MS1V2.
MS1V3.



Product Information

Description

This 24^{5/8}" freestanding storage cabinet has 1 module with a variety of configurations and sloped pulls. Doors and drawers are available in smooth steel, textured steel, or veneer. The cabinet's top is available in metal or veneer. 5 base heights are available; all bases include adjustable glides. A counterweight is included.

The bottom module's file/file drawer configuration includes a side-to-side filing rail in the 24"-wide file drawer and front-to-back filing rails in the 30"-wide file drawer. The box/box/file configuration includes an adjustable metal divider in each box drawer and a file compressor in each file drawer. All drawers are controlled by 1 lock. The briefcase storage area locks with a slide bar secured behind the locking drawers.

Notes

For examples of stackable modules, see Sample Stackable Storage™ Cabinet Configurations in Appendices.

Front-facing filing module is the reference point when specifying orientation for full- or half-dome top or oversail veneer top.

To pass cables through bottom module (M), specify cable management channel (CC). Order pass-through harness (PG330.) separately.

Grain direction is vertical for veneer-front storage cabinets.

To convert filing direction in file/file drawer configuration, order 1 of the following products separately:

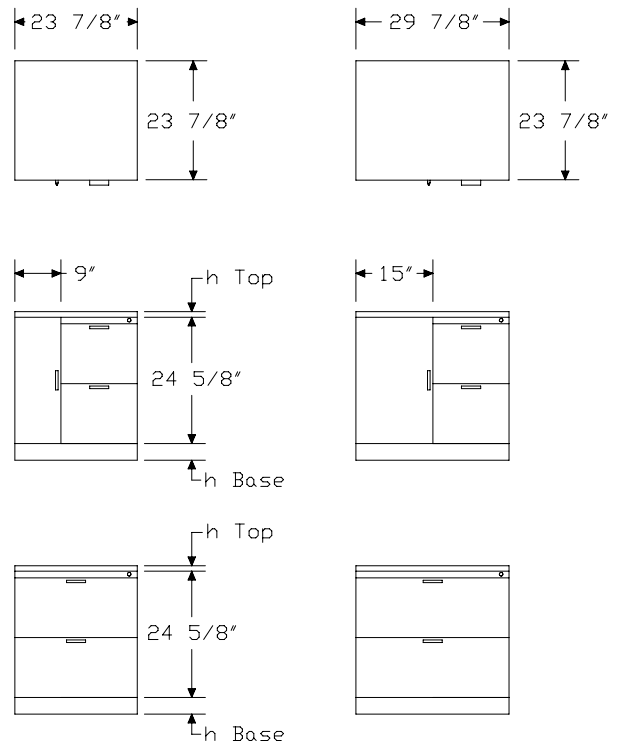
- Front-to-back filing rail (9P002)
- Side-to-side filing rail (9R130)

Order optional accessories separately:

- Drawer divider (73-1567-D)
- File drawer organizer (73-9874-FDO)
- File drawer organizer (LG901)
- Pencil tray (73-1516-PT)
- Stationery tray (73-7082-SST)

For keyed-alike locks, order lock plugs separately. See Keyed-Alike Information in Appendices.

Dimensions



Stackable Storage™ Cabinet, 1 Module High, Sloped Pull *continued*

Specification Information	
Step 1.	
MS1	
Step 2. Front Material	
P	painted metal front
V	veneer front <input type="checkbox"/> A
Step 3. Width	
2.	24" wide
3.	30" wide
Step 4. Configuration	
M	file/file
N	door left, file/file right
P	file/file left, door right
R	door left, box/box/file right
S	box/box/file left, door right
Prices for Steps 1-4.	
MS1P2.M	\$848
N	\$1200
P	\$1200
R	\$1242
S	\$1242
MS1P3.M	\$880
N	\$1230
P	\$1230
R	\$1272
S	\$1272
MS1V2.M	\$1485
N	\$1834
P	\$1834
R	\$1878
S	\$1878
MS1V3.M	\$1514
N	\$1864
P	\$1864
R	\$1907
S	\$1907

Step 5. Paint/Steel Type		
SS	smooth paint on smooth steel	+\$0
TS	smooth paint on textured steel	+\$0
XS	textured paint on smooth steel	+\$0

Step 6. Surface Finish		
<i>For smooth paint on smooth steel (SS) or smooth paint on textured steel (TS)</i>		
Nonmetallic Paint		+\$0
Metallic Paint		+\$50

Sand Texture Paint		
<i>For textured paint on smooth steel (XS)</i>		
7L	dune	+\$0
7M	chai	+\$0
7N	grass	+\$0
7U	blue ridge	+\$0
7V	loden	+\$0
7W	napa	+\$0
7Y	sedona	+\$0
7Z	mink	+\$0
8T	gull	+\$0
8Y	moonbeam	+\$0
B4	blue medium	+\$0
ZK	cappuccino	+\$0

Bright Sand Texture Paint		
<i>For textured paint on smooth steel (XS)</i>		
91	white	+\$0
CL	cool grey neutral	+\$0
G1	graphite	+\$0
WN	warm grey neutral	+\$0

Step 7. Pull Finish		
G2	graphite satin	+\$0
CS	brushed copper	+\$35
U1	brushed aluminum	+\$35

Stackable Storage™ Cabinet, 1 Module High, Sloped Pull *continued*

Step 8. Top		2.	3.
NT	no top	+\$0	0
T1	1"-high painted metal top with squared edge	+\$0	0
T2	1¼"-high painted metal top with squared edge	+\$0	0
J3	1¼"-high cathedral recut veneer top <input type="checkbox"/>	+\$204	224
TF	1¼"-high wood veneer top <input type="checkbox"/>	+\$210	231
D1	6½"-high full dome, side-to-side	+\$210	231
D2	6½"-high full dome, front-to-back	+\$210	231
H1	6½"-high half dome, sloping left	+\$210	231
H2	6½"-high half dome, sloping right	+\$210	231
H3	6½"-high half dome, sloping front	+\$210	231
H4	6½"-high half dome, sloping back	+\$210	231
TV1	1⅛"-high wood veneer top and wood composite edge with oversail front <input type="checkbox"/>	+\$315	315

Step 9.

Veneer Top Finish: Wood Veneer

For painted metal front (P) with 1⅛"-high wood veneer top and wood composite edge with oversail front (TV1)

ED	aged cherry <input type="checkbox"/>	+\$24
EG	medium brown walnut <input type="checkbox"/>	+\$24
EK	medium red walnut <input type="checkbox"/>	+\$24
EY	light anigre <input type="checkbox"/>	+\$24
UL	natural maple <input type="checkbox"/>	+\$24
UQ	light cherry <input type="checkbox"/>	+\$24
UV	red cherry <input type="checkbox"/>	+\$24
UX	walnut on cherry <input type="checkbox"/>	+\$24

Veneer Top Finish: Recut Veneer

For painted metal front (P) with 1¼"-high cathedral recut veneer top (J3)

DU	cathedral recut natural maple <input type="checkbox"/>	+\$0
HU	cathedral recut light anigre <input type="checkbox"/>	+\$0
JU	cathedral recut aged cherry <input type="checkbox"/>	+\$0
VU	cathedral recut light brown walnut <input type="checkbox"/>	+\$0
WU	cathedral recut walnut on cherry <input type="checkbox"/>	+\$0
XU	cathedral recut medium red cherry <input type="checkbox"/>	+\$0
ZU	cathedral recut chocolate brown sapele <input type="checkbox"/>	+\$0

Veneer Top Finish: Wood Veneer

For painted metal front (P) with 1¼"-high wood veneer top (TF)

V3	cherry <input type="checkbox"/>	+\$18
Z3	warm red cherry <input type="checkbox"/>	+\$18
Z5	maple <input type="checkbox"/>	+\$18
2U	light brown walnut <input type="checkbox"/>	+\$24
3U	medium red cherry <input type="checkbox"/>	+\$24
6U	chocolate brown sapele <input type="checkbox"/>	+\$24
ED	aged cherry <input type="checkbox"/>	+\$24
EG	medium brown walnut <input type="checkbox"/>	+\$24
EK	medium red walnut <input type="checkbox"/>	+\$24
EY	light anigre <input type="checkbox"/>	+\$24
UL	natural maple <input type="checkbox"/>	+\$24
UQ	light cherry <input type="checkbox"/>	+\$24
UV	red cherry <input type="checkbox"/>	+\$24
UX	walnut on cherry <input type="checkbox"/>	+\$24

Veneer Front Finish: Recut Veneer

For veneer front (V) with no top (NT), 1"-high painted metal top with squared edge (T1), 1¼"-high painted metal top with squared edge (T2), 6½"-high full dome, side-to-side (D1), 6½"-high full dome, front-to-back (D2), 6½"-high half dome, sloping left (H1), 6½"-high half dome, sloping right (H2), 6½"-high half dome, sloping front (H3), or 6½"-high half dome, sloping back (H4)

DU	cathedral recut natural maple <input type="checkbox"/>	+\$0
HU	cathedral recut light anigre <input type="checkbox"/>	+\$0
JU	cathedral recut aged cherry <input type="checkbox"/>	+\$0
VU	cathedral recut light brown walnut <input type="checkbox"/>	+\$0
WU	cathedral recut walnut on cherry <input type="checkbox"/>	+\$0
XU	cathedral recut medium red cherry <input type="checkbox"/>	+\$0
ZU	cathedral recut chocolate brown sapele <input type="checkbox"/>	+\$0

Stackable Storage™ Cabinet, 1 Module High, Sloped Pull *continued*

Veneer Front Finish: Wood Veneer

For veneer front (V) with no top (NT), 1"-high painted metal top with squared edge (T1), 1 1/4"-high painted metal top with squared edge (T2), 6 1/2"-high full dome, side-to-side (D1), 6 1/2"-high full dome, front-to-back (D2), 6 1/2"-high half dome, sloping left (H1), 6 1/2"-high half dome, sloping right (H2), 6 1/2"-high half dome, sloping front (H3), or 6 1/2"-high half dome, sloping back (H4)

V3	cherry <input type="checkbox"/>	+\$32
Z3	warm red cherry <input type="checkbox"/>	+\$32
Z5	maple <input type="checkbox"/>	+\$32
2U	light brown walnut <input type="checkbox"/>	+\$40
3U	medium red cherry <input type="checkbox"/>	+\$40
6U	chocolate brown sapele <input type="checkbox"/>	+\$40
ED	aged cherry <input type="checkbox"/>	+\$40
EG	medium brown walnut <input type="checkbox"/>	+\$40
EK	medium red walnut <input type="checkbox"/>	+\$40
EY	light anigre <input type="checkbox"/>	+\$40
UL	natural maple <input type="checkbox"/>	+\$40
UQ	light cherry <input type="checkbox"/>	+\$40
UV	red cherry <input type="checkbox"/>	+\$40
UX	walnut on cherry <input type="checkbox"/>	+\$40

Veneer Front/Top Finish: Wood Veneer

For veneer front (V) with 1 1/8"-high wood veneer top and wood composite edge with oversail front (TV1)

ED	aged cherry <input type="checkbox"/>	+\$40
EG	medium brown walnut <input type="checkbox"/>	+\$40
EK	medium red walnut <input type="checkbox"/>	+\$40
EY	light anigre <input type="checkbox"/>	+\$40
UL	natural maple <input type="checkbox"/>	+\$40
UQ	light cherry <input type="checkbox"/>	+\$40
UV	red cherry <input type="checkbox"/>	+\$40
UX	walnut on cherry <input type="checkbox"/>	+\$40

Veneer Front/Top Finish: Recut Veneer

For veneer front (V) with 1 1/4"-high cathedral recut veneer top (J3)

DU	cathedral recut natural maple <input type="checkbox"/>	+\$0
HU	cathedral recut light anigre <input type="checkbox"/>	+\$0
JU	cathedral recut aged cherry <input type="checkbox"/>	+\$0
VU	cathedral recut light brown walnut <input type="checkbox"/>	+\$0
WU	cathedral recut walnut on cherry <input type="checkbox"/>	+\$0
XU	cathedral recut medium red cherry <input type="checkbox"/>	+\$0
ZU	cathedral recut chocolate brown sapele <input type="checkbox"/>	+\$0

Veneer Front/Top Finish: Wood Veneer

For veneer front (V) with 1 1/4"-high wood veneer top (TF)

V3	cherry <input type="checkbox"/>	+\$32
Z3	warm red cherry <input type="checkbox"/>	+\$32
Z5	maple <input type="checkbox"/>	+\$32
2U	light brown walnut <input type="checkbox"/>	+\$40
3U	medium red cherry <input type="checkbox"/>	+\$40
6U	chocolate brown sapele <input type="checkbox"/>	+\$40
ED	aged cherry <input type="checkbox"/>	+\$40
EG	medium brown walnut <input type="checkbox"/>	+\$40
EK	medium red walnut <input type="checkbox"/>	+\$40
EY	light anigre <input type="checkbox"/>	+\$40
UL	natural maple <input type="checkbox"/>	+\$40
UQ	light cherry <input type="checkbox"/>	+\$40
UV	red cherry <input type="checkbox"/>	+\$40
UX	walnut on cherry <input type="checkbox"/>	+\$40

Step 10. Lock

KA	keyed alike	+\$0
KC	keyed differently, chrome	+\$0
KD	keyed differently, black	+\$0

Step 11. Base Height

B1	1"-high base	+\$0
B2	1 1/2"-high base	+\$0
B3	2 1/4"-high base	+\$0
B4	3 1/4"-high base	+\$0
B5	4 1/4"-high base	+\$32

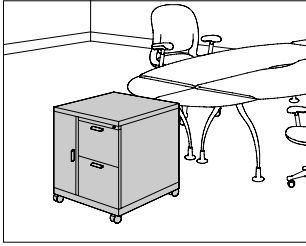
Step 12. Cable Management Channel

For file/file (M)

NC	no cable management channel	+\$0
CC	cable management channel	+\$69

Mobile Stackable Storage™
Cabinet, 1 Module High, Sloped
Pull

MS1CP2
MS1CP3
MS1CV2
MS1CV3



Product Information

Description

This 29⁵/₈"-high mobile storage cabinet has 1 module with a variety of configurations and sloped pulls. Doors and drawers are available in smooth steel, textured steel, or veneer. The cabinet's top is available in metal or veneer. The 5¹/₂"-high caster base includes a 1¹/₂"-high metal frame and 4 4"-diameter casters; 2 casters include a brake. A counterweight is included.

The bottom module's file/file drawer configuration includes a side-to-side filing rail in the 24"-wide file drawer and front-to-back filing rails in the 30"-wide file drawer. The box/box/file configuration includes an adjustable metal divider in each box drawer and a file compressor in each file drawer. All drawers are controlled by 1 lock. The briefcase storage area locks with a slide bar secured behind the locking drawers.

Notes

For examples of stackable modules, see Sample Stackable Storage™ Cabinet Configurations in Appendices.

Front-facing filing module is the reference point when specifying orientation for full- or half-dome top or oversail veneer top.

Casters must be field installed.

Cables cannot be routed through mobile cabinets.

Grain direction is vertical for veneer-front storage cabinets.

To convert filing direction in file/file drawer configuration, order 1 of the following products separately:

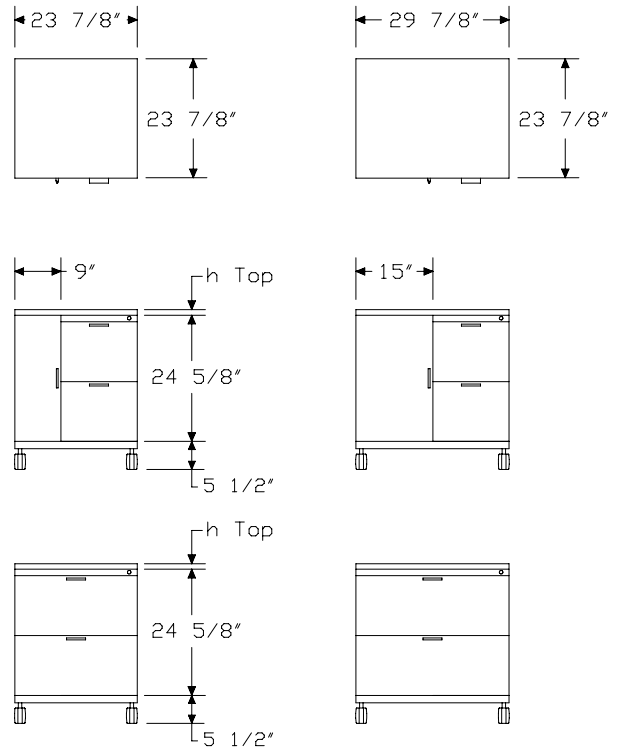
- Front-to-back filing rail (9P002)
- Side-to-side filing rail (9R130)

Order optional accessories separately:

- Drawer divider (73-1567-D)
- File drawer organizer (73-9874-FDO)
- File drawer organizer (LG901)
- Pencil tray (73-1516-PT)
- Stationery tray (73-7082-SST)

For keyed-alike locks, order lock plugs separately. See Keyed-Alike Information in Appendices.

Dimensions



Mobile Stackable Storage™
Cabinet, 1 Module High, Sloped
Pull *continued*

Specification Information	
Step 1.	
MS1C	
Step 2. Front Material	
P	painted metal front
V	veneer front <input type="checkbox"/> A
Step 3. Width	
2.	24" wide
3.	30" wide
Step 4. Configuration	
M	file/file
N	door left, file/file right
P	file/file left, door right
R	door left, box/box/file right
S	box/box/file left, door right
Prices for Steps 1-4.	
MS1CP2. M	\$1030
N	\$1381
P	\$1381
R	\$1452
S	\$1452
MS1CP3. M	\$1060
N	\$1412
P	\$1412
R	\$1452
S	\$1452
MS1CV2. M	\$1666
N	\$2017
P	\$2017
R	\$2059
S	\$2059
MS1CV3. M	\$1695
N	\$2046
P	\$2046
R	\$2089
S	\$2089

Step 5. Paint/Steel Type	
SS	smooth paint on smooth steel +\$0
TS	smooth paint on textured steel +\$0
XS	textured paint on smooth steel +\$0

Step 6. Surface Finish	
<i>For smooth paint on smooth steel (SS) or smooth paint on textured steel (TS)</i>	
Nonmetallic Paint	+\$0
Metallic Paint	+\$50

Sand Texture Paint	
<i>For textured paint on smooth steel (XS)</i>	
7L	dune +\$0
7M	chai +\$0
7N	grass +\$0
7U	blue ridge +\$0
7V	loden +\$0
7W	napa +\$0
7Y	sedona +\$0
7Z	mink +\$0
8T	gull +\$0
8Y	moonbeam +\$0
B4	blue medium +\$0
ZK	cappuccino +\$0

Bright Sand Texture Paint	
<i>For textured paint on smooth steel (XS)</i>	
91	white +\$0
CL	cool grey neutral +\$0
G1	graphite +\$0
WN	warm grey neutral +\$0

Step 7. Pull Finish	
G2	graphite satin +\$0
CS	brushed copper +\$35
U1	brushed aluminum +\$35

Mobile Stackable Storage™
Cabinet, 1 Module High, Sloped
Pull *continued*

Step 8. Top		2.	3.
NT	no top	+\$0	0
T1	1"-high painted metal top with squared edge	+\$0	0
T2	1¼"-high painted metal top with squared edge	+\$0	0
J3	1¼"-high cathedral recut veneer top <input type="checkbox"/> A	+\$204	224
TF	1¼"-high wood veneer top <input type="checkbox"/> A	+\$210	231
D1	6½"-high full dome, side-to-side	+\$210	231
D2	6½"-high full dome, front-to-back	+\$210	231
H1	6½"-high half dome, sloping left	+\$210	231
H2	6½"-high half dome, sloping right	+\$210	231
H3	6½"-high half dome, sloping front	+\$210	231
H4	6½"-high half dome, sloping back	+\$210	231
TV1	1⅛"-high wood veneer top and wood composite edge with oversail front <input type="checkbox"/> A	+\$315	315

Step 9.

Veneer Top Finish: Wood Veneer
For painted metal front (P) with 1⅛"-high wood veneer top and wood composite edge with oversail front (TV1)

ED	aged cherry <input type="checkbox"/> A	+\$24
EG	medium brown walnut <input type="checkbox"/> A	+\$24
EK	medium red walnut <input type="checkbox"/> A	+\$24
EY	light anigre <input type="checkbox"/> A	+\$24
UL	natural maple <input type="checkbox"/> A	+\$24
UQ	light cherry <input type="checkbox"/> A	+\$24
UV	red cherry <input type="checkbox"/> A	+\$24
UX	walnut on cherry <input type="checkbox"/> A	+\$24

Veneer Top Finish: Recut Veneer
For painted metal front (P) with 1¼"-high cathedral recut veneer top (J3)

DU	cathedral recut natural maple <input type="checkbox"/> A	+\$0
HU	cathedral recut light anigre <input type="checkbox"/> A	+\$0
JU	cathedral recut aged cherry <input type="checkbox"/> A	+\$0
VU	cathedral recut light brown walnut <input type="checkbox"/> A	+\$0
WU	cathedral recut walnut on cherry <input type="checkbox"/> A	+\$0
XU	cathedral recut medium red cherry <input type="checkbox"/> A	+\$0
ZU	cathedral recut chocolate brown sapele <input type="checkbox"/> A	+\$0

Veneer Top Finish: Wood Veneer

For painted metal front (P) with 1¼"-high wood veneer top (TF)

V3	cherry <input type="checkbox"/> A	+\$18
Z3	warm red cherry <input type="checkbox"/> A	+\$18
Z5	maple <input type="checkbox"/> A	+\$18
2U	light brown walnut <input type="checkbox"/> A	+\$24
3U	medium red cherry <input type="checkbox"/> A	+\$24
6U	chocolate brown sapele <input type="checkbox"/> A	+\$24
ED	aged cherry <input type="checkbox"/> A	+\$24
EG	medium brown walnut <input type="checkbox"/> A	+\$24
EK	medium red walnut <input type="checkbox"/> A	+\$24
EY	light anigre <input type="checkbox"/> A	+\$24
UL	natural maple <input type="checkbox"/> A	+\$24
UQ	light cherry <input type="checkbox"/> A	+\$24
UV	red cherry <input type="checkbox"/> A	+\$24
UX	walnut on cherry <input type="checkbox"/> A	+\$24

Veneer Front Finish: Recut Veneer

For veneer front (V) with no top (NT), 1"-high painted metal top with squared edge (T1), 1¼"-high painted metal top with squared edge (T2), 6½"-high full dome, side-to-side (D1), 6½"-high full dome, front-to-back (D2), 6½"-high half dome, sloping left (H1), 6½"-high half dome, sloping right (H2), 6½"-high half dome, sloping front (H3), or 6½"-high half dome, sloping back (H4)

DU	cathedral recut natural maple <input type="checkbox"/> A	+\$0
HU	cathedral recut light anigre <input type="checkbox"/> A	+\$0
JU	cathedral recut aged cherry <input type="checkbox"/> A	+\$0
VU	cathedral recut light brown walnut <input type="checkbox"/> A	+\$0
WU	cathedral recut walnut on cherry <input type="checkbox"/> A	+\$0
XU	cathedral recut medium red cherry <input type="checkbox"/> A	+\$0
ZU	cathedral recut chocolate brown sapele <input type="checkbox"/> A	+\$0

Mobile Stackable Storage™
Cabinet, 1 Module High, Sloped
Pull *continued*

Veneer Front Finish: Wood Veneer

For veneer front (V) with no top (NT), 1"-high painted metal top with squared edge (T1), 1 1/4"-high painted metal top with squared edge (T2), 6 1/2"-high full dome, side-to-side (D1), 6 1/2"-high full dome, front-to-back (D2), 6 1/2"-high half dome, sloping left (H1), 6 1/2"-high half dome, sloping right (H2), 6 1/2"-high half dome, sloping front (H3), or 6 1/2"-high half dome, sloping back (H4)

V3	cherry [A]	+\$32
Z3	warm red cherry [A]	+\$32
Z5	maple [A]	+\$32
2U	light brown walnut [A]	+\$40
3U	medium red cherry [A]	+\$40
6U	chocolate brown sapele [A]	+\$40
ED	aged cherry [A]	+\$40
EG	medium brown walnut [A]	+\$40
EK	medium red walnut [A]	+\$40
EY	light anigre [A]	+\$40
UL	natural maple [A]	+\$40
UQ	light cherry [A]	+\$40
UV	red cherry [A]	+\$40
UX	walnut on cherry [A]	+\$40

Veneer Front/Top Finish: Wood Veneer

For veneer front (V) with 1 1/8"-high wood veneer top and wood composite edge with oversail front (TV1)

ED	aged cherry [A]	+\$40
EG	medium brown walnut [A]	+\$40
EK	medium red walnut [A]	+\$40
EY	light anigre [A]	+\$40
UL	natural maple [A]	+\$40
UQ	light cherry [A]	+\$40
UV	red cherry [A]	+\$40
UX	walnut on cherry [A]	+\$40

Veneer Front/Top Finish: Recut Veneer

For veneer front (V) with 1 1/4"-high cathedral recut veneer top (J3)

DU	cathedral recut natural maple [A]	+\$0
HU	cathedral recut light anigre [A]	+\$0
JU	cathedral recut aged cherry [A]	+\$0
VU	cathedral recut light brown walnut [A]	+\$0
WU	cathedral recut walnut on cherry [A]	+\$0
XU	cathedral recut medium red cherry [A]	+\$0
ZU	cathedral recut chocolate brown sapele [A]	+\$0

Veneer Front/Top Finish: Wood Veneer

For veneer front (V) with 1 1/4"-high wood veneer top (TF)

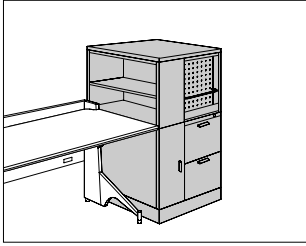
V3	cherry [A]	+\$32
Z3	warm red cherry [A]	+\$32
Z5	maple [A]	+\$32
2U	light brown walnut [A]	+\$40
3U	medium red cherry [A]	+\$40
6U	chocolate brown sapele [A]	+\$40
ED	aged cherry [A]	+\$40
EG	medium brown walnut [A]	+\$40
EK	medium red walnut [A]	+\$40
EY	light anigre [A]	+\$40
UL	natural maple [A]	+\$40
UQ	light cherry [A]	+\$40
UV	red cherry [A]	+\$40
UX	walnut on cherry [A]	+\$40

Step 10. Lock

KA	keyed alike	+\$0
KC	keyed differently, chrome	+\$0
KD	keyed differently, black	+\$0

Stackable Storage™ Cabinet, 2 Modules High, Sloped Pull

MS2P2.
MS2P3.
MS2V2.
MS2V3.



Product Information

Description

This freestanding storage cabinet has 2 modules with a variety of configurations to store or display project materials, binders and books, printers, fax machines, and personal items. It includes a 24 5/8"-high bottom module and a 20"- or 49"-high top module. Each module is configured separately. The cabinet has sloped pulls. Doors and drawers are available in smooth steel, textured steel, or veneer. Translucent doors are available on select top modules; they do not lock. Translucent doors have a painted aluminum frame with brushed aluminum sloped pulls (U1). The cabinet's top is available in metal or veneer. 5 base heights are available; all bases include adjustable glides.

The bottom module's file/file drawer configuration includes a side-to-side filing rail in the 24"-wide file drawer and front-to-back filing rails in the 30"-wide file drawer. The box/box/file configuration includes an adjustable metal divider in each box drawer and a file compressor in each file drawer. All drawers are controlled by 1 lock. The briefcase storage area locks with a slide bar secured behind the locking drawers.

The top module interiors include the following:

Component—Interior

Bookcase—1 adjustable shelf

20"-High Storage Case—1 adjustable shelf

49"-High Storage Case—2 adjustable shelves

Pullout Shelf—1 hanging file frame and 1 divider

49"-High Wardrobe—1 side-to-side coat rod

Notes

For examples of stackable modules, see Sample Stackable Storage™ Cabinet Configurations in Appendices.

Front-facing filing module is the reference point when specifying orientation for full- or half-dome top or oversail veneer top.

For doors specified on 24"-wide top and bottom modules, 9"-wide doors must align on same side of cabinet.

To pass cables through bottom module (M), specify cable management channel (CC). Order pass-through harness (PG330.) separately.

Grain direction is vertical for veneer-front storage cabinets.

To convert filing direction in file/file drawer configuration, order 1 of the following products separately:

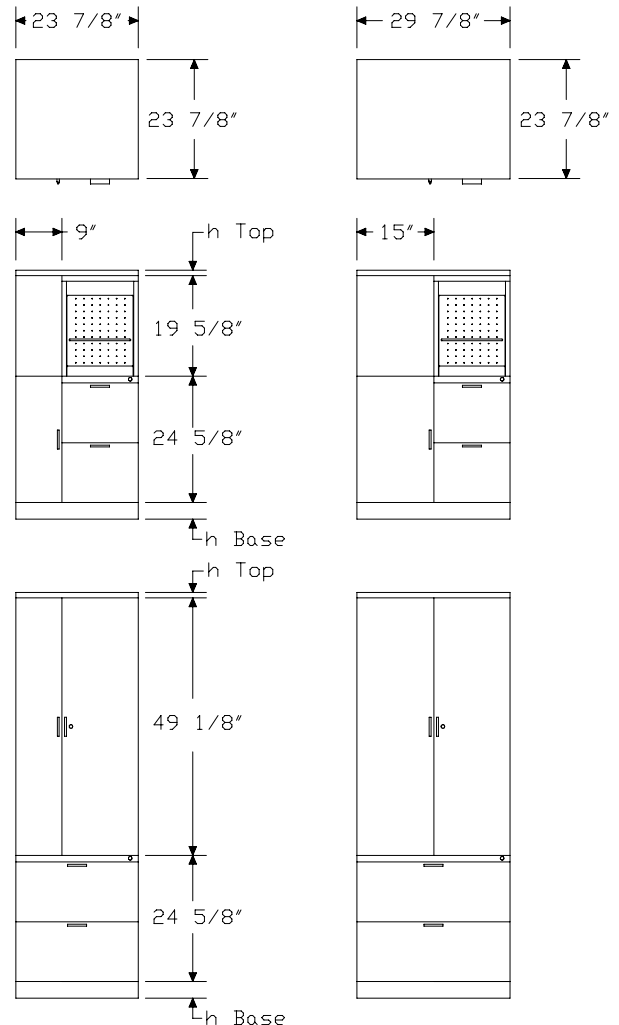
- Front-to-back filing rail (9P002)
- Side-to-side filing rail (9R130)

Order optional accessories separately:

- Adjustable shelf (MSAS)
- Binder backstop divider (4B-BD)
- Drawer divider (73-1567-D)
- File drawer organizer (73-9874-FDO)
- File drawer organizer (LG901)
- Pencil tray (73-1516-PT)
- Stationery tray (73-7082-SST)

For keyed-alike locks, order lock plugs separately. See Keyed-Alike Information in Appendices.

Dimensions



Stackable Storage™ Cabinet, 2 Modules High, Sloped Pull *continued*

Specification Information		
Step 1.		
MS2		
Step 2. Front Material		
P	painting metal front	\$0
V	veneer front A	\$0
Step 3. Width		
2.1	24" wide	+\$0
3.1	30" wide	+\$0
Step 4. Top Module Configuration		

<i>For painted metal front (P) with 24" wide (2.1)</i>		
A	20"-high module with 9"-wide door left and 15"-wide door right	+\$570
3	20"-high module with 9"-wide translucent door left and 15"-wide translucent door right A	+\$1133
B	20"-high module with 15"-wide door left and 9"-wide door right	+\$570
4	20"-high module with 15"-wide translucent door left and 9"-wide translucent door right A	+\$1133
C	20"-high dual-access module with bookcase left and 15"-wide door right	+\$631
D	20"-high dual-access module with 15"-wide door left and bookcase right	+\$631
E	20"-high dual-access module with bookcase left and 15"-wide display/pullout shelf right	+\$727
F	20"-high dual-access module with 15"-wide display/pullout shelf left and bookcase right	+\$727
T	20"-high open shelf	+\$388
K	49"-high module with 9"-wide door left and 15"-wide door right	+\$862
L	49"-high module with 15"-wide door left and 9"-wide door right	+\$862
H	49"-high module with 9"-wide wardrobe left and 15"-wide door right	+\$982
J	49"-high module with 15"-wide door left and 9"-wide wardrobe right	+\$982

<i>For painted metal front (P) with 30" wide (3.1)</i>		
A	20"-high module with doors	+\$601
3	20"-high module with translucent doors A	+\$1164
C	20" high dual-access module with bookcase left and door right	+\$662
D	20" high dual-access module with door left and bookcase right	+\$662
E	20" high dual-access module with bookcase left and display/pullout shelf	+\$758
F	20" high dual-access module with display/pullout shelf left and bookcase right	+\$758
T	20"-high open shelf	+\$421
K	49"-high module with doors	+\$921
H	49"-high module with wardrobe left and door right	+\$1043
J	49"-high module with door left and wardrobe right	+\$1043

<i>For veneer front (V) with 24" wide (2.1)</i>		
A	20"-high module with 9"-wide door left and 15"-wide door right A	+\$964
3	20"-high module with 9"-wide translucent door left and 15"-wide translucent door right A	+\$1133
B	20"-high module with 15"-wide door left and 9"-wide door right A	+\$964
4	20"-high module with 15"-wide translucent door left and 9"-wide translucent door right A	+\$1133
C	20"-high dual-access module with bookcase left and 15"-wide door right A	+\$872
D	20"-high dual-access module with 15"-wide door left and bookcase right A	+\$872
E	20"-high dual-access module with bookcase left and 15"-wide display/pullout shelf right A	+\$727
F	20"-high dual-access module with 15"-wide display/pullout shelf left and bookcase right A	+\$727
T	20"-high open shelf A	+\$388
K	49"-high module with 9"-wide door left and 15"-wide door right A	+\$1586
L	49"-high module with 15"-wide door left and 9"-wide door right A	+\$1586
H	49"-high module with 9"-wide wardrobe left and 15"-wide door right A	+\$1708
J	49"-high module with 15"-wide door left and 9"-wide wardrobe right A	+\$1708

Stackable Storage™ Cabinet, 2 Modules High, Sloped Pull *continued*

For veneer front (V) with 30" wide (3.1)

A	20"-high module with doors A	+\$994
3	20"-high module with translucent doors A	+\$1164
C	20" high dual-access module with bookcase left and door right A	+\$904
D	20" high dual-access module with door left and bookcase right A	+\$904
E	20" high dual-access module with bookcase left and display/pullout shelf A	+\$758
F	20" high dual-access module with display/pullout shelf left and bookcase right A	+\$758
T	20"-high open shelf A	+\$421
K	49"-high module with doors A	+\$1647
H	49"-high module with wardrobe left and door right A	+\$1767
J	49"-high module with door left and wardrobe right A	+\$1767

Step 5. Bottom Module Configuration

For painted metal front (P) with 24" wide (2.1) with 20"-high module with 9"-wide door left and 15"-wide door right (A), painted metal front (P) with 20"-high module with 9"-wide translucent door left and 15"-wide translucent door right (3), painted metal front (P) with 20"-high dual-access module with bookcase left and 15"-wide door right (C), painted metal front (P) with 20"-high dual-access module with bookcase left and 15"-wide display/pullout shelf right (E), painted metal front (P) with 49"-high module with 9"-wide door left and 15"-wide door right (K), or painted metal front (P) with 49"-high module with 9"-wide wardrobe left and 15"-wide door right (H)

M	file/file	+\$848
N	door left, file/file right	+\$1200
R	door left, box/box/file right	+\$1242

For painted metal front (P) with 24" wide (2.1) with 20"-high module with 15"-wide door left and 9"-wide door right (B), painted metal front (P) with 20"-high module with 15"-wide translucent door left and 9"-wide translucent door right (4), painted metal front (P) with 20"-high dual-access module with 15"-wide door left and bookcase right (D), painted metal front (P) with 20"-high dual-access module with 15"-wide display/pullout shelf left and bookcase right (F), painted metal front (P) with 49"-high module with 15"-wide door left and 9"-wide door right (L), or painted metal front (P) with 49"-high module with 15"-wide door left and 9"-wide wardrobe right (I)

M	file/file	+\$848
P	file/file left, door right	+\$1200
S	box/box/file left, door right	+\$1242

For painted metal front (P) with 24" wide (2.1) with 20"-high open shelf (T)

M	file/file	+\$848
N	door left, file/file right	+\$1200
P	file/file left, door right	+\$1200
R	door left, box/box/file right	+\$1242
S	box/box/file left, door right	+\$1242

For painted metal front (P) with 30" wide (3.1)

M	file/file	+\$880
N	door left, file/file right	+\$1230
P	file/file left, door right	+\$1230
R	door left, box/box/file right	+\$1272
S	box/box/file left, door right	+\$1272

For veneer front (V) with 24" wide (2.1) with 20"-high module with 9"-wide door left and 15"-wide door right (A), veneer front (V) with 20"-high module with 9"-wide translucent door left and 15"-wide translucent door right (3), veneer front (V) with 20"-high dual-access module with bookcase left and 15"-wide door right (C), veneer front (V) with 20"-high dual-access module with bookcase left and 15"-wide display/pullout shelf right (E), veneer front (V) with 49"-high module with 9"-wide door left and 15"-wide door right (K), or veneer front (V) with 49"-high module with 9"-wide wardrobe left and 15"-wide door right (H)

M	file/file A	+\$1485
N	door left, file/file right A	+\$1834
R	door left, box/box/file right A	+\$1878

For veneer front (V) with 24" wide (2.1) with 20"-high module with 15"-wide door left and 9"-wide door right (B), veneer front (V) with 20"-high module with 15"-wide translucent door left and 9"-wide translucent door right (4), veneer front (V) with 20"-high dual-access module with 15"-wide door left and bookcase right (D), veneer front (V) with 20"-high dual-access module with 15"-wide display/pullout shelf left and bookcase right (F), veneer front (V) with 49"-high module with 15"-wide door left and 9"-wide door right (L), or veneer front (V) with 49"-high module with 15"-wide door left and 9"-wide wardrobe right (I)

M	file/file A	+\$1485
P	file/file left, door right A	+\$1834
S	box/box/file left, door right A	+\$1878

Stackable Storage™ Cabinet, 2 Modules High, Sloped Pull *continued*

For veneer front (V) with 24" wide (2.1) with 20"-high open shelf (T)

M	file/file <input type="checkbox"/> A	+\$1485
N	door left, file/file right <input type="checkbox"/> A	+\$1834
P	file/file left, door right <input type="checkbox"/> A	+\$1834
R	door left, box/box/file right <input type="checkbox"/> A	+\$1878
S	box/box/file left, door right <input type="checkbox"/> A	+\$1878

For veneer front (V) with 30" wide (3.1)

M	file/file <input type="checkbox"/> A	+\$1514
N	door left, file/file right <input type="checkbox"/> A	+\$1864
P	file/file left, door right <input type="checkbox"/> A	+\$1864
R	door left, box/box/file right <input type="checkbox"/> A	+\$1907
S	box/box/file left, door right <input type="checkbox"/> A	+\$1907

Step 6. Paint/Steel Type

SS	smooth paint on smooth steel	+\$0
TS	smooth paint on textured steel	+\$0
XS	textured paint on smooth steel	+\$0

Step 7. Surface Finish

For smooth paint on smooth steel (SS) or smooth paint on textured steel (TS)

	Nonmetallic Paint	+\$0
	Metallic Paint	+\$100

Sand Texture Paint

For textured paint on smooth steel (XS)

7L	dune	+\$0
7M	chai	+\$0
7N	grass	+\$0
7U	blue ridge	+\$0
7V	loden	+\$0
7W	napa	+\$0
7Y	sedona	+\$0
7Z	mink	+\$0
8T	gull	+\$0
8Y	moonbeam	+\$0
B4	blue medium	+\$0
ZK	cappuccino	+\$0

Bright Sand Texture Paint

For textured paint on smooth steel (XS)

91	white	+\$0
CL	cool grey neutral	+\$0
G1	graphite	+\$0
WN	warm grey neutral	+\$0

Step 8. Pull Finish

G2	graphite satin	+\$0
CS	brushed copper	+\$35
U1	brushed aluminum	+\$35

Step 9. Top

		2.1	3.1
NT	no top	+\$0	0
T1	1"-high painted metal top with squared edge	+\$0	0
T2	1 1/4"-high painted metal top with squared edge	+\$0	0
J3	1 1/4"-high cathedral recut veneer top <input type="checkbox"/> A	+\$204	224
TF	1 1/4"-high wood veneer top <input type="checkbox"/> A	+\$210	231
D1	6 1/2"-high full dome, side-to-side	+\$210	231
D2	6 1/2"-high full dome, front-to-back	+\$210	231
H1	6 1/2"-high half dome, sloping left	+\$210	231
H2	6 1/2"-high half dome, sloping right	+\$210	231
H3	6 1/2"-high half dome, sloping front	+\$210	231
H4	6 1/2"-high half dome, sloping back	+\$210	231
TV1	1 1/8"-high wood veneer top and wood composite edge with oversail front <input type="checkbox"/> A	+\$315	315

Step 10.

Veneer Top Finish: Wood Veneer

For painted metal front (P) with 1 1/8"-high wood veneer top and wood composite edge with oversail front (TV1)

ED	aged cherry <input type="checkbox"/> A	+\$24
EG	medium brown walnut <input type="checkbox"/> A	+\$24
EK	medium red walnut <input type="checkbox"/> A	+\$24
EY	light anigre <input type="checkbox"/> A	+\$24
UL	natural maple <input type="checkbox"/> A	+\$24
UQ	light cherry <input type="checkbox"/> A	+\$24
UV	red cherry <input type="checkbox"/> A	+\$24
UX	walnut on cherry <input type="checkbox"/> A	+\$24

Veneer Top Finish: Recut Veneer

For painted metal front (P) with 1 1/4"-high cathedral recut veneer top (J3)

DU	cathedral recut natural maple <input type="checkbox"/> A	+\$0
HU	cathedral recut light anigre <input type="checkbox"/> A	+\$0
JU	cathedral recut aged cherry <input type="checkbox"/> A	+\$0
VU	cathedral recut light brown walnut <input type="checkbox"/> A	+\$0
WU	cathedral recut walnut on cherry <input type="checkbox"/> A	+\$0
XU	cathedral recut medium red cherry <input type="checkbox"/> A	+\$0
ZU	cathedral recut chocolate brown sapele <input type="checkbox"/> A	+\$0

Stackable Storage™ Cabinet, 2
 Modules High, Sloped Pull *continued*

Veneer Top Finish: Wood Veneer

For painted metal front (P) with 1¼"-high wood veneer top (TF)

V3	cherry <input type="checkbox"/>	+\$18
Z3	warm red cherry <input type="checkbox"/>	+\$18
Z5	maple <input type="checkbox"/>	+\$18
2U	light brown walnut <input type="checkbox"/>	+\$24
3U	medium red cherry <input type="checkbox"/>	+\$24
6U	chocolate brown sapele <input type="checkbox"/>	+\$24
ED	aged cherry <input type="checkbox"/>	+\$24
EG	medium brown walnut <input type="checkbox"/>	+\$24
EK	medium red walnut <input type="checkbox"/>	+\$24
EY	light anigre <input type="checkbox"/>	+\$24
UL	natural maple <input type="checkbox"/>	+\$24
UQ	light cherry <input type="checkbox"/>	+\$24
UV	red cherry <input type="checkbox"/>	+\$24
UX	walnut on cherry <input type="checkbox"/>	+\$24

Veneer Front Finish: Recut Veneer

For veneer front (V) with no top (NT), 1"-high painted metal top with squared edge (T1), 1¼"-high painted metal top with squared edge (T2), 6½"-high full dome, side-to-side (D1), 6½"-high full dome, front-to-back (D2), 6½"-high half dome, sloping left (H1), 6½"-high half dome, sloping right (H2), 6½"-high half dome, sloping front (H3), or 6½"-high half dome, sloping back (H4)

DU	cathedral recut natural maple <input type="checkbox"/>	+\$0
HU	cathedral recut light anigre <input type="checkbox"/>	+\$0
JU	cathedral recut aged cherry <input type="checkbox"/>	+\$0
VU	cathedral recut light brown walnut <input type="checkbox"/>	+\$0
WU	cathedral recut walnut on cherry <input type="checkbox"/>	+\$0
XU	cathedral recut medium red cherry <input type="checkbox"/>	+\$0
ZU	cathedral recut chocolate brown sapele <input type="checkbox"/>	+\$0

Veneer Front Finish: Wood Veneer

For veneer front (V) with no top (NT), 1"-high painted metal top with squared edge (T1), 1¼"-high painted metal top with squared edge (T2), 6½"-high full dome, side-to-side (D1), 6½"-high full dome, front-to-back (D2), 6½"-high half dome, sloping left (H1), 6½"-high half dome, sloping right (H2), 6½"-high half dome, sloping front (H3), or 6½"-high half dome, sloping back (H4)

V3	cherry <input type="checkbox"/>	+\$53
Z3	warm red cherry <input type="checkbox"/>	+\$53
Z5	maple <input type="checkbox"/>	+\$53
2U	light brown walnut <input type="checkbox"/>	+\$66
3U	medium red cherry <input type="checkbox"/>	+\$66
6U	chocolate brown sapele <input type="checkbox"/>	+\$66
ED	aged cherry <input type="checkbox"/>	+\$66
EG	medium brown walnut <input type="checkbox"/>	+\$66
EK	medium red walnut <input type="checkbox"/>	+\$66
EY	light anigre <input type="checkbox"/>	+\$66
UL	natural maple <input type="checkbox"/>	+\$66
UQ	light cherry <input type="checkbox"/>	+\$66
UV	red cherry <input type="checkbox"/>	+\$66
UX	walnut on cherry <input type="checkbox"/>	+\$66

Veneer Front/Top Finish: Wood Veneer

For veneer front (V) with 1⅝"-high wood veneer top and wood composite edge with oversail front (TV1)

ED	aged cherry <input type="checkbox"/>	+\$66
EG	medium brown walnut <input type="checkbox"/>	+\$66
EK	medium red walnut <input type="checkbox"/>	+\$66
EY	light anigre <input type="checkbox"/>	+\$66
UL	natural maple <input type="checkbox"/>	+\$66
UQ	light cherry <input type="checkbox"/>	+\$66
UV	red cherry <input type="checkbox"/>	+\$66
UX	walnut on cherry <input type="checkbox"/>	+\$66

Veneer Front/Top Finish: Recut Veneer

For veneer front (V) with 1¼"-high cathedral recut veneer top (J3)

DU	cathedral recut natural maple <input type="checkbox"/>	+\$0
HU	cathedral recut light anigre <input type="checkbox"/>	+\$0
JU	cathedral recut aged cherry <input type="checkbox"/>	+\$0
VU	cathedral recut light brown walnut <input type="checkbox"/>	+\$0
WU	cathedral recut walnut on cherry <input type="checkbox"/>	+\$0
XU	cathedral recut medium red cherry <input type="checkbox"/>	+\$0
ZU	cathedral recut chocolate brown sapele <input type="checkbox"/>	+\$0

Stackable Storage™ Cabinet, 2 Modules High, Sloped Pull *continued*

Veneer Front/Top Finish: Wood Veneer

For veneer front (V) with 1 1/4"-high wood veneer top (TF)

V3	cherry <input type="checkbox"/>	+\$53
Z3	warm red cherry <input type="checkbox"/>	+\$53
Z5	maple <input type="checkbox"/>	+\$53
2U	light brown walnut <input type="checkbox"/>	+\$66
3U	medium red cherry <input type="checkbox"/>	+\$66
6U	chocolate brown sapele <input type="checkbox"/>	+\$66
ED	aged cherry <input type="checkbox"/>	+\$66
EG	medium brown walnut <input type="checkbox"/>	+\$66
EK	medium red walnut <input type="checkbox"/>	+\$66
EY	light anigre <input type="checkbox"/>	+\$66
UL	natural maple <input type="checkbox"/>	+\$66
UQ	light cherry <input type="checkbox"/>	+\$66
UV	red cherry <input type="checkbox"/>	+\$66
UX	walnut on cherry <input type="checkbox"/>	+\$66

Step 11. Lock

KA	keyed alike	+\$0
KC	keyed differently, chrome	+\$0
KD	keyed differently, black	+\$0

Step 12. Base Height

B1	1"-high base	+\$0
B2	1 1/2"-high base	+\$0
B3	2 1/4"-high base	+\$0
B4	3 1/4"-high base	+\$0
B5	4 1/4"-high base	+\$32

Step 13. Translucent Finish

For 20"-high module with 9"-wide translucent door left and 15"-wide translucent door right (3), 20"-high module with translucent doors (3), or 20"-high module with 15"-wide translucent door left and 9"-wide translucent door right (4)

FS	frosted <input type="checkbox"/>	+\$0
TR	clear <input type="checkbox"/>	+\$0

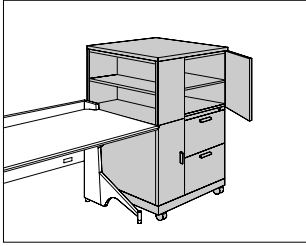
Step 14. Cable Management Channel

For file/file (M)

NC	no cable management channel	+\$0
CC	cable management channel	+\$69

Mobile Stackable Storage™
Cabinet, 2 Modules High, Sloped
Pull

MS2CP2
MS2CP3
MS2CV2
MS2CV3



Product Information

Description

This mobile storage cabinet has 2 modules with a variety of configurations to store or display project materials, binders and books, printers, fax machines, and personal items. It includes a 29⁵/₈"-high bottom module and a 20"-high top module. Each module is configured separately. The cabinet has sloped pulls. Doors and drawers are available in smooth steel, textured steel, or veneer. Translucent doors are available on select top modules; they do not lock. Translucent doors have a painted aluminum frame with brushed aluminum sloped pulls (U1). The cabinet's top is available in metal or veneer.

The bottom module's file/file drawer configuration includes a side-to-side filing rail in the 24"-wide file drawer and front-to-back filing rails in the 30"-wide file drawer. The box/box/file configuration includes an adjustable metal divider in each box drawer and a file compressor in each file drawer. All drawers are controlled by 1 lock. The briefcase storage area locks with a slide bar secured behind the locking drawers. The 5¹/₂"-high caster base includes a 1¹/₂"-high metal frame and 4 4"-diameter casters; 2 casters include a brake. A counterweight is included.

The top module interiors include the following:

Component—Interior

Bookcase—1 adjustable shelf

20"-High Storage Case—1 adjustable shelf

Notes

For examples of stackable modules, see Sample Stackable Storage™ Cabinet Configurations in Appendices.

Front-facing filing module is the reference point when specifying orientation for full- or half-dome top or oversail veneer top.

Casters must be field installed.

For doors specified on 24"-wide top and bottom modules, 9"-wide doors must align on same side of cabinet.

Cables cannot be routed through mobile cabinets.

Grain direction is vertical for veneer-front storage cabinets.

To convert filing direction in file/file drawer configuration, order 1 of the following products separately:

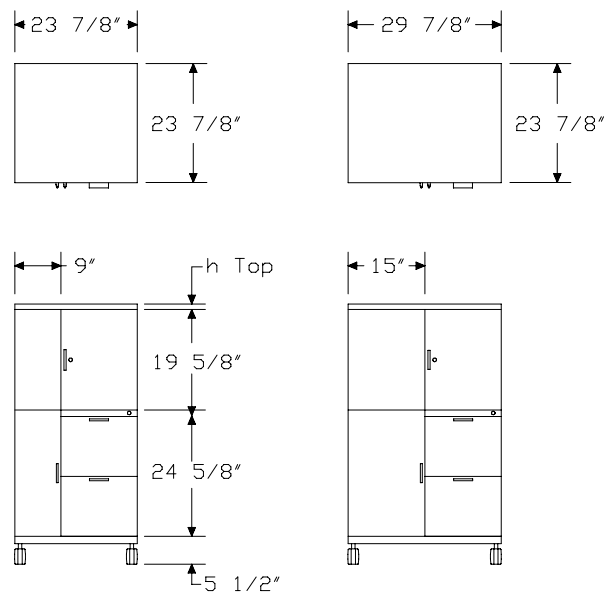
- Front-to-back filing rail (9P002)
- Side-to-side filing rail (9R130)

Order optional accessories separately:

- Adjustable shelf (MSAS)
- Drawer divider (73-1567-D)
- File drawer organizer (73-9874-FDO)
- File drawer organizer (LG901)
- Pencil tray (73-1516-PT)
- Stationery tray (73-7082-SST)

For keyed-alike locks, order lock plugs separately. See Keyed-Alike Information in Appendices.

Dimensions



Mobile Stackable Storage™ Cabinet, 2 Modules High, Sloped Pull *continued*

Specification Information

Step 1.

MS2C

Step 2. Front Material

P	painted metal front	\$0
V	veneer front A	\$0

Step 3. Width

2.1	24" wide	+\$0
3.1	30" wide	+\$0

Step 4. Top Module Configuration

For painted metal front (P) with 24" wide (2.1)

A	20"-high module with 9"-wide door left and 15"-wide door right	+\$570
3	20"-high module with 9"-wide translucent door left and 15"-wide translucent door right A	+\$1133
B	20"-high module with 15"-wide door left and 9"-wide door right	+\$570
4	20"-high module with 15"-wide translucent door left and 9"-wide translucent door right A	+\$1133
C	20"-high dual-access module with bookcase left and 15"-wide door right	+\$631
D	20"-high dual-access module with 15"-wide door left and bookcase right	+\$631
T	20"-high open shelf	+\$388

For painted metal front (P) with 30" wide (3.1)

A	20"-high module with doors	+\$601
3	20"-high module with translucent doors A	+\$1164
C	20" high dual-access module with bookcase left and door right	+\$662
D	20" high dual-access module with door left and bookcase right	+\$662
T	20"-high open shelf	+\$421

For veneer front (V) with 24" wide (2.1)

A	20"-high module with 9"-wide door left and 15"-wide door right A	+\$964
3	20"-high module with 9"-wide translucent door left and 15"-wide translucent door right A	+\$1133
B	20"-high module with 15"-wide door left and 9"-wide door right A	+\$964
4	20"-high module with 15"-wide translucent door left and 9"-wide translucent door right A	+\$1133
C	20"-high dual-access module with bookcase left and 15"-wide door right A	+\$872
D	20"-high dual-access module with 15"-wide door left and bookcase right A	+\$872
T	20"-high open shelf A	+\$388

For veneer front (V) with 30" wide (3.1)

A	20"-high module with doors A	+\$994
3	20"-high module with translucent doors A	+\$1164
C	20" high dual-access module with bookcase left and door right A	+\$904
D	20" high dual-access module with door left and bookcase right A	+\$904
T	20"-high open shelf A	+\$421

Step 5. Bottom Module Configuration

For painted metal front (P) with 24" wide (2.1) with 20"-high module with 9"-wide door left and 15"-wide door right (A), painted metal front (P) with 20"-high module with 9"-wide translucent door left and 15"-wide translucent door right (3), or painted metal front (P) with 20"-high dual-access module with bookcase left and 15"-wide door right (C)

M	file/file	+\$1030
N	door left, file/file right	+\$1381
R	door left, box/box/file right	+\$1423

For painted metal front (P) with 24" wide (2.1) with 20"-high module with 15"-wide door left and 9"-wide door right (B), painted metal front (P) with 20"-high module with 15"-wide translucent door left and 9"-wide translucent door right (4), or painted metal front (P) with 20"-high dual-access module with 15"-wide door left and bookcase right (D)

M	file/file	+\$1030
P	file/file left, door right	+\$1381
S	box/box/file left, door right	+\$1423

Mobile Stackable Storage™
Cabinet, 2 Modules High, Sloped
Pull *continued*

For painted metal front (P) with 24" wide (2.1) with 20"-high open shelf (T)

M	file/file	+\$1030
N	door left, file/file right	+\$1381
P	file/file left, door right	+\$1381
R	door left, box/box/file right	+\$1423
S	box/box/file left, door right	+\$1423

For painted metal front (P) with 30" wide (3.1)

M	file/file	+\$1060
N	door left, file/file right	+\$1412
P	file/file left, door right	+\$1412
R	door left, box/box/file right	+\$1452
S	box/box/file left, door right	+\$1452

For veneer front (V) with 24" wide (2.1) with 20"-high module with 9"-wide door left and 15"-wide door right (A), veneer front (V) with 20"-high module with 9"-wide translucent door left and 15"-wide translucent door right (3), or veneer front (V) with 20"-high dual-access module with bookcase left and 15"-wide door right (C)

M	file/file A	+\$1666
N	door left, file/file right A	+\$2017
R	door left, box/box/file right A	+\$2059

For veneer front (V) with 24" wide (2.1) with 20"-high module with 15"-wide door left and 9"-wide door right (B), veneer front (V) with 20"-high module with 15"-wide translucent door left and 9"-wide translucent door right (4), or veneer front (V) with 20"-high dual-access module with 15"-wide door left and bookcase right (D)

M	file/file A	+\$1666
P	file/file left, door right A	+\$2017
S	box/box/file left, door right A	+\$2059

For veneer front (V) with 24" wide (2.1) with 20"-high open shelf (T)

M	file/file A	+\$1666
N	door left, file/file right A	+\$2017
P	file/file left, door right A	+\$2017
R	door left, box/box/file right A	+\$2059
S	box/box/file left, door right A	+\$2059

For veneer front (V) with 30" wide (3.1)

M	file/file A	+\$1695
N	door left, file/file right A	+\$2046
P	file/file left, door right A	+\$2046
R	door left, box/box/file right A	+\$2089
S	box/box/file left, door right A	+\$2089

Step 6. Paint/Steel Type

SS	smooth paint on smooth steel	+\$0
TS	smooth paint on textured steel	+\$0
XS	textured paint on smooth steel	+\$0

Step 7. Surface Finish

For smooth paint on smooth steel (SS) or smooth paint on textured steel (TS)

	Nonmetallic Paint	+\$0
	Metallic Paint	+\$100

For textured paint on smooth steel (XS)

	Sand Texture Paint	
7L	dune	+\$0
7M	chai	+\$0
7N	grass	+\$0
7U	blue ridge	+\$0
7V	loden	+\$0
7W	napa	+\$0
7Y	sedona	+\$0
7Z	mink	+\$0
8T	gull	+\$0
8Y	moonbeam	+\$0
B4	blue medium	+\$0
ZK	cappuccino	+\$0

Bright Sand Texture Paint

For textured paint on smooth steel (XS)

91	white	+\$0
CL	cool grey neutral	+\$0
G1	graphite	+\$0
WN	warm grey neutral	+\$0

Step 8. Pull Finish

G2	graphite satin	+\$0
CS	brushed copper	+\$35
U1	brushed aluminum	+\$35

Mobile Stackable Storage™
Cabinet, 2 Modules High, Sloped
Pull *continued*

Step 9. Top			
		2.1	3.1
NT	no top	+\$0	0
T1	1"-high painted metal top with squared edge	+\$0	0
T2	1¼"-high painted metal top with squared edge	+\$0	0
J3	1¼"-high cathedral recut veneer top <input type="checkbox"/>	+\$204	224
TF	1¼"-high wood veneer top <input type="checkbox"/>	+\$210	231
D1	6½"-high full dome, side-to-side	+\$210	231
D2	6½"-high full dome, front-to-back	+\$210	231
H1	6½"-high half dome, sloping left	+\$210	231
H2	6½"-high half dome, sloping right	+\$210	231
H3	6½"-high half dome, sloping front	+\$210	231
H4	6½"-high half dome, sloping back	+\$210	231
TV1	1⅛"-high wood veneer top and wood composite edge with oversail front <input type="checkbox"/>	+\$315	315

Step 10.

Veneer Top Finish: Wood Veneer

For painted metal front (P) with 1⅛"-high wood veneer top and wood composite edge with oversail front (TV1)

ED	aged cherry <input type="checkbox"/>	+\$24
EG	medium brown walnut <input type="checkbox"/>	+\$24
EK	medium red walnut <input type="checkbox"/>	+\$24
EY	light anigre <input type="checkbox"/>	+\$24
UL	natural maple <input type="checkbox"/>	+\$24
UQ	light cherry <input type="checkbox"/>	+\$24
UV	red cherry <input type="checkbox"/>	+\$24
UX	walnut on cherry <input type="checkbox"/>	+\$24

Veneer Top Finish: Recut Veneer

For painted metal front (P) with 1¼"-high cathedral recut veneer top (J3)

DU	cathedral recut natural maple <input type="checkbox"/>	+\$0
HU	cathedral recut light anigre <input type="checkbox"/>	+\$0
JU	cathedral recut aged cherry <input type="checkbox"/>	+\$0
VU	cathedral recut light brown walnut <input type="checkbox"/>	+\$0
WU	cathedral recut walnut on cherry <input type="checkbox"/>	+\$0
XU	cathedral recut medium red cherry <input type="checkbox"/>	+\$0
ZU	cathedral recut chocolate brown sapele <input type="checkbox"/>	+\$0

Veneer Top Finish: Wood Veneer

For painted metal front (P) with 1¼"-high wood veneer top (TF)

V3	cherry <input type="checkbox"/>	+\$18
Z3	warm red cherry <input type="checkbox"/>	+\$18
Z5	maple <input type="checkbox"/>	+\$18
2U	light brown walnut <input type="checkbox"/>	+\$24
3U	medium red cherry <input type="checkbox"/>	+\$24
6U	chocolate brown sapele <input type="checkbox"/>	+\$24
ED	aged cherry <input type="checkbox"/>	+\$24
EG	medium brown walnut <input type="checkbox"/>	+\$24
EK	medium red walnut <input type="checkbox"/>	+\$24
EY	light anigre <input type="checkbox"/>	+\$24
UL	natural maple <input type="checkbox"/>	+\$24
UQ	light cherry <input type="checkbox"/>	+\$24
UV	red cherry <input type="checkbox"/>	+\$24
UX	walnut on cherry <input type="checkbox"/>	+\$24

Veneer Front Finish: Recut Veneer

For veneer front (V) with no top (NT), 1"-high painted metal top with squared edge (T1), 1¼"-high painted metal top with squared edge (T2), 6½"-high full dome, side-to-side (D1), 6½"-high full dome, front-to-back (D2), 6½"-high half dome, sloping left (H1), 6½"-high half dome, sloping right (H2), 6½"-high half dome, sloping front (H3), or 6½"-high half dome, sloping back (H4)

DU	cathedral recut natural maple <input type="checkbox"/>	+\$0
HU	cathedral recut light anigre <input type="checkbox"/>	+\$0
JU	cathedral recut aged cherry <input type="checkbox"/>	+\$0
VU	cathedral recut light brown walnut <input type="checkbox"/>	+\$0
WU	cathedral recut walnut on cherry <input type="checkbox"/>	+\$0
XU	cathedral recut medium red cherry <input type="checkbox"/>	+\$0
ZU	cathedral recut chocolate brown sapele <input type="checkbox"/>	+\$0

Mobile Stackable Storage™
Cabinet, 2 Modules High, Sloped
Pull *continued*

Veneer Front Finish: Wood Veneer

For veneer front (V) with no top (NT), 1"-high painted metal top with squared edge (T1), 1¼"-high painted metal top with squared edge (T2), 6½"-high full dome, side-to-side (D1), 6½"-high full dome, front-to-back (D2), 6½"-high half dome, sloping left (H1), 6½"-high half dome, sloping right (H2), 6½"-high half dome, sloping front (H3), or 6½"-high half dome, sloping back (H4)

V3	cherry <input type="checkbox"/>	+\$53
Z3	warm red cherry <input type="checkbox"/>	+\$53
Z5	maple <input type="checkbox"/>	+\$53
2U	light brown walnut <input type="checkbox"/>	+\$66
3U	medium red cherry <input type="checkbox"/>	+\$66
6U	chocolate brown sapele <input type="checkbox"/>	+\$66
ED	aged cherry <input type="checkbox"/>	+\$66
EG	medium brown walnut <input type="checkbox"/>	+\$66
EK	medium red walnut <input type="checkbox"/>	+\$66
EY	light anigre <input type="checkbox"/>	+\$66
UL	natural maple <input type="checkbox"/>	+\$66
UQ	light cherry <input type="checkbox"/>	+\$66
UV	red cherry <input type="checkbox"/>	+\$66
UX	walnut on cherry <input type="checkbox"/>	+\$66

Veneer Front/Top Finish: Wood Veneer

For veneer front (V) with 1⅛"-high wood veneer top and wood composite edge with oversail front (TV1)

ED	aged cherry <input type="checkbox"/>	+\$66
EG	medium brown walnut <input type="checkbox"/>	+\$66
EK	medium red walnut <input type="checkbox"/>	+\$66
EY	light anigre <input type="checkbox"/>	+\$66
UL	natural maple <input type="checkbox"/>	+\$66
UQ	light cherry <input type="checkbox"/>	+\$66
UV	red cherry <input type="checkbox"/>	+\$66
UX	walnut on cherry <input type="checkbox"/>	+\$66

Veneer Front/Top Finish: Recut Veneer

For veneer front (V) with 1¼"-high cathedral recut veneer top (J3)

DU	cathedral recut natural maple <input type="checkbox"/>	+\$0
HU	cathedral recut light anigre <input type="checkbox"/>	+\$0
JU	cathedral recut aged cherry <input type="checkbox"/>	+\$0
VU	cathedral recut light brown walnut <input type="checkbox"/>	+\$0
WU	cathedral recut walnut on cherry <input type="checkbox"/>	+\$0
XU	cathedral recut medium red cherry <input type="checkbox"/>	+\$0
ZU	cathedral recut chocolate brown sapele <input type="checkbox"/>	+\$0

Veneer Front/Top Finish: Wood Veneer

For veneer front (V) with 1¼"-high wood veneer top (TF)

V3	cherry <input type="checkbox"/>	+\$53
Z3	warm red cherry <input type="checkbox"/>	+\$53
Z5	maple <input type="checkbox"/>	+\$53
2U	light brown walnut <input type="checkbox"/>	+\$66
3U	medium red cherry <input type="checkbox"/>	+\$66
6U	chocolate brown sapele <input type="checkbox"/>	+\$66
ED	aged cherry <input type="checkbox"/>	+\$66
EG	medium brown walnut <input type="checkbox"/>	+\$66
EK	medium red walnut <input type="checkbox"/>	+\$66
EY	light anigre <input type="checkbox"/>	+\$66
UL	natural maple <input type="checkbox"/>	+\$66
UQ	light cherry <input type="checkbox"/>	+\$66
UV	red cherry <input type="checkbox"/>	+\$66
UX	walnut on cherry <input type="checkbox"/>	+\$66

Step 11. Lock

KA	keyed alike	+\$0
KC	keyed differently, chrome	+\$0
KD	keyed differently, black	+\$0

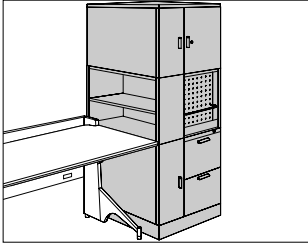
Step 12. Translucent Finish

For 20"-high module with 9"-wide translucent door left and 15"-wide translucent door right (3), 20"-high module with translucent doors (3), or 20"-high module with 15"-wide translucent door left and 9"-wide translucent door right (4)

FS	frosted <input type="checkbox"/>	+\$0
TR	clear <input type="checkbox"/>	+\$0

Stackable Storage™ Cabinet, 3 Modules High, Sloped Pull

MS3P2.
MS3P3.
MS3V2.
MS3V3.



Product Information

Description

This freestanding storage cabinet has 3 modules with a variety of configurations to store or display project materials, binders and books, printers, fax machines, and personal items. It includes a 24⁵/₈"-high bottom module, a 20"-high middle module, and a 20"-high top module. Each module is configured separately. The cabinet has sloped pulls. Doors and drawers are available in smooth steel, textured steel, or veneer. Translucent doors are available on select top modules; they do not lock. Translucent doors have a painted aluminum frame with brushed aluminum sloped pulls (U₁). The cabinet's top is available in metal or veneer. 5 base heights are available; all bases include adjustable glides.

The bottom module's file/file drawer configuration includes a side-to-side filing rail in the 24"-wide file drawer and front-to-back filing rails in the 30"-wide file drawer. The box/box/file configuration includes an adjustable metal divider in each box drawer and a file compressor in each file drawer. All drawers are controlled by 1 lock. The briefcase storage area locks with a slide bar secured behind the locking drawers.

The top and middle module interiors include the following:

Component—Interior

Bookcase—1 adjustable shelf

Storage Case—1 adjustable shelf

Pullout Shelf—1 hanging file frame and 1 divider

Notes

For examples of stackable modules, see Sample Stackable Storage™ Cabinet Configurations in Appendices.

Front-facing filing module is the reference point when specifying orientation for full- or half-dome top or oversail veneer top.

For doors specified on 24"-wide top and/or middle module and bottom module, 9"-wide doors must align on same side of cabinet.

To pass cables through bottom module (M), specify cable management channel (CC). Order pass-through harness (PG330.) separately.

Grain direction is vertical for veneer-front storage cabinets.

To convert filing direction in file/file drawer configuration, order 1 of the following products separately:

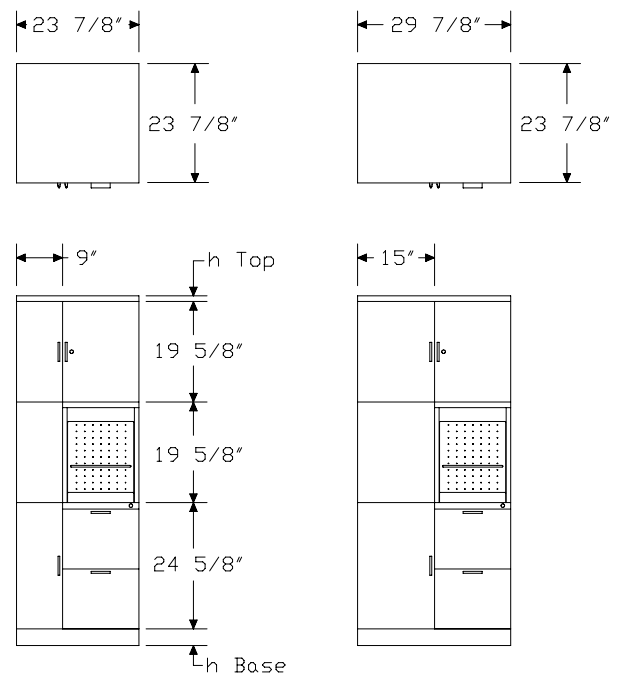
- Front-to-back filing rail (9P002)
- Side-to-side filing rail (9R130)

Order optional accessories separately:

- Adjustable shelf (MSAS)
- Binder backstop divider (4B-BD)
- Drawer divider (73-1567-D)
- File drawer organizer (73-9874-FDO)
- File drawer organizer (LG901)
- Pencil tray (73-1516-PT)
- Stationery tray (73-7082-SST)

For keyed-alike locks, order lock plugs separately. See Keyed-Alike Information in Appendices.

Dimensions



Stackable Storage™ Cabinet, 3 Modules High, Sloped Pull *continued*

Specification Information

Step 1.

MS3

Step 2. Front Material

P	painted metal front	\$0
V	veneer front A	\$0

Step 3. Width

2.1	24" wide	+\$0
3.1	30" wide	+\$0

Step 4. Top Module Configuration

For painted metal front (P) with 24" wide (2.1)

A	20"-high module with 9"-wide door left and 15"-wide door right	+\$570
3	20"-high module with 9"-wide translucent door left and 15"-wide translucent door right A	+\$1133
B	20"-high module with 15"-wide door left and 9"-wide door right	+\$570
4	20"-high module with 15"-wide translucent door left and 9"-wide translucent door right A	+\$1133
C	20"-high dual-access module with bookcase left and 15"-wide door right	+\$631
D	20"-high dual-access module with 15"-wide door left and bookcase right	+\$631

For painted metal front (P) with 30" wide (3.1)

A	20"-high module with doors	+\$601
3	20"-high module with translucent doors A	+\$1164
C	20" high dual-access module with bookcase left and door right	+\$662
D	20" high dual-access module with door left and bookcase right	+\$662

For veneer front (V) with 24" wide (2.1)

A	20"-high module with 9"-wide door left and 15"-wide door right A	+\$964
3	20"-high module with 9"-wide translucent door left and 15"-wide translucent door right A	+\$1133
B	20"-high module with 15"-wide door left and 9"-wide door right A	+\$964
4	20"-high module with 15"-wide translucent door left and 9"-wide translucent door right A	+\$1133
C	20"-high dual-access module with bookcase left and 15"-wide door right A	+\$872
D	20"-high dual-access module with 15"-wide door left and bookcase right A	+\$872

For veneer front (V) with 30" wide (3.1)

A	20"-high module with doors A	+\$994
3	20"-high module with translucent doors A	+\$1164
C	20" high dual-access module with bookcase left and door right A	+\$904
D	20" high dual-access module with door left and bookcase right A	+\$904

Step 5. Middle Module Configuration

For painted metal front (P) with 24" wide (2.1) with 20"-high module with 9"-wide door left and 15"-wide door right (A), painted metal front (P) with 20"-high module with 9"-wide translucent door left and 15"-wide translucent door right (3), or painted metal front (P) with 20"-high dual-access module with bookcase left and 15"-wide door right (C)

A	20"-high module with 9"-wide door left and 15"-wide door right	+\$570
3	20"-high module with 9"-wide translucent door left and 15"-wide translucent door right A	+\$1133
C	20"-high dual-access module with bookcase left and 15"-wide door right	+\$631
E	20"-high dual-access module with bookcase left and 15"-wide display/pullout shelf right	+\$727
T	20"-high open shelf	+\$388

Stackable Storage™ Cabinet, 3 Modules High, Sloped Pull *continued*

For painted metal front (P) with 24" wide (2.1) with 20"-high module with 15"-wide door left and 9"-wide door right (B), painted metal front (P) with 20"-high module with 15"-wide translucent door left and 9"-wide translucent door right (4), or painted metal front (P) with 20"-high dual-access module with 15"-wide door left and bookcase right (D)

B	20"-high module with 15"-wide door left and 9"-wide door right	+\$570
4	20"-high module with 15"-wide translucent door left and 9"-wide translucent door right A	+\$1133
D	20"-high dual-access module with 15"-wide door left and bookcase right	+\$631
F	20"-high dual-access module with 15"-wide display/pullout shelf left and bookcase right	+\$727
T	20"-high open shelf	+\$388

For painted metal front (P) with 30" wide (3.1)

A	20"-high module with doors	+\$601
3	20"-high module with translucent doors A	+\$1164
C	20" high dual-access module with bookcase left and door right	+\$662
D	20" high dual-access module with door left and bookcase right	+\$662
E	20" high dual-access module with bookcase left and display/pullout shelf	+\$758
F	20" high dual-access module with display/pullout shelf left and bookcase right	+\$758
T	20"-high open shelf	+\$421

For veneer front (V) with 24" wide (2.1) with 20"-high module with 9"-wide door left and 15"-wide door right (A), veneer front (V) with 20"-high module with 9"-wide translucent door left and 15"-wide translucent door right (3), or veneer front (V) with 20"-high dual-access module with bookcase left and 15"-wide door right (C)

A	20"-high module with 9"-wide door left and 15"-wide door right A	+\$964
3	20"-high module with 9"-wide translucent door left and 15"-wide translucent door right A	+\$1133
C	20"-high dual-access module with bookcase left and 15"-wide door right A	+\$872
E	20"-high dual-access module with bookcase left and 15"-wide display/pullout shelf right A	+\$727
T	20"-high open shelf A	+\$388

For veneer front (V) with 24" wide (2.1) with 20"-high module with 15"-wide door left and 9"-wide door right (B), veneer front (V) with 20"-high module with 15"-wide translucent door left and 9"-wide translucent door right (4), or veneer front (V) with 20"-high dual-access module with 15"-wide door left and bookcase right (D)

B	20"-high module with 15"-wide door left and 9"-wide door right A	+\$964
4	20"-high module with 15"-wide translucent door left and 9"-wide translucent door right A	+\$1133
D	20"-high dual-access module with 15"-wide door left and bookcase right A	+\$872
F	20"-high dual-access module with 15"-wide display/pullout shelf left and bookcase right A	+\$727
T	20"-high open shelf A	+\$388

For veneer front (V) with 30" wide (3.1)

A	20"-high module with doors A	+\$994
3	20"-high module with translucent doors A	+\$1164
C	20" high dual-access module with bookcase left and door right A	+\$904
D	20" high dual-access module with door left and bookcase right A	+\$904
E	20" high dual-access module with bookcase left and display/pullout shelf A	+\$758
F	20" high dual-access module with display/pullout shelf left and bookcase right A	+\$758
T	20"-high open shelf A	+\$421

Step 6. Bottom Module Configuration

For painted metal front (P) with 24" wide (2.1) with combinations of configurations A, C, E, T, or 3

M	file/file	+\$848
N	door left, file/file right	+\$1200
R	door left, box/box/file right	+\$1242

For painted metal front (P) with 24" wide (2.1) with combinations of configurations B, D, F, T, or 4

M	file/file	+\$848
P	file/file left, door right	+\$1200
S	box/box/file left, door right	+\$1242

Stackable Storage™ Cabinet, 3 Modules High, Sloped Pull *continued*

<i>For painted metal front (P) with 30" wide (3.1)</i>		
M	file/file	+\$880
N	door left, file/file right	+\$1230
P	file/file left, door right	+\$1230
R	door left, box/box/file right	+\$1272
S	box/box/file left, door right	+\$1272

<i>For veneer front (V) with 24" wide (2.1) with combinations of configurations A, C, E, T, or 3</i>		
M	file/file A	+\$1485
N	door left, file/file right A	+\$1834
R	door left, box/box/file right A	+\$1878

<i>For veneer front (V) with 24" wide (2.1) with combinations of configurations B, D, F, T, or 4</i>		
M	file/file A	+\$1485
P	file/file left, door right A	+\$1834
S	box/box/file left, door right A	+\$1878

<i>For veneer front (V) with 30" wide (3.1)</i>		
M	file/file A	+\$1514
N	door left, file/file right A	+\$1864
P	file/file left, door right A	+\$1864
R	door left, box/box/file right A	+\$1907
S	box/box/file left, door right A	+\$1907

Step 7. Paint/Steel Type		
SS	smooth paint on smooth steel	+\$0
TS	smooth paint on textured steel	+\$0
XS	textured paint on smooth steel	+\$0

Step 8. Surface Finish		
<i>For smooth paint on smooth steel (SS) or smooth paint on textured steel (TS)</i>		
	Nonmetallic Paint	+\$0
	Metallic Paint	+\$150

Sand Texture Paint		
<i>For textured paint on smooth steel (XS)</i>		
7L	dune	+\$0
7M	chai	+\$0
7N	grass	+\$0
7U	blue ridge	+\$0
7V	loden	+\$0
7W	napa	+\$0
7Y	sedona	+\$0
7Z	mink	+\$0
8T	gull	+\$0
8Y	moonbeam	+\$0
B4	blue medium	+\$0
ZK	cappuccino	+\$0

Bright Sand Texture Paint		
<i>For textured paint on smooth steel (XS)</i>		
91	white	+\$0
CL	cool grey neutral	+\$0
G1	graphite	+\$0
WN	warm grey neutral	+\$0

Step 9. Pull Finish		
G2	graphite satin	+\$0
CS	brushed copper	+\$35
U1	brushed aluminum	+\$35

Step 10. Top			
		2.1	3.1
NT	no top	+\$0	0
T1	1"-high painted metal top with squared edge	+\$0	0
T2	1 ¹ / ₄ "-high painted metal top with squared edge	+\$0	0
J3	1 ¹ / ₄ "-high cathedral recut veneer top A	+\$204	224
TF	1 ¹ / ₄ "-high wood veneer top A	+\$210	231
D1	6 ¹ / ₂ "-high full dome, side-to-side	+\$210	231
D2	6 ¹ / ₂ "-high full dome, front-to-back	+\$210	231
H1	6 ¹ / ₂ "-high half dome, sloping left	+\$210	231
H2	6 ¹ / ₂ "-high half dome, sloping right	+\$210	231
H3	6 ¹ / ₂ "-high half dome, sloping front	+\$210	231
H4	6 ¹ / ₂ "-high half dome, sloping back	+\$210	231
TV1	1 ¹ / ₈ "-high wood veneer top and wood composite edge with oversail front A	+\$315	315

Stackable Storage™ Cabinet, 3 Modules High, Sloped Pull *continued*

Step 11.

Veneer Top Finish: Wood Veneer
For painted metal front (P) with 1¹/₈"-high wood veneer top and wood composite edge with oversail front (TV₁)

ED	aged cherry [A]	+\$24
EG	medium brown walnut [A]	+\$24
EK	medium red walnut [A]	+\$24
EY	light anigre [A]	+\$24
UL	natural maple [A]	+\$24
UQ	light cherry [A]	+\$24
UV	red cherry [A]	+\$24
UX	walnut on cherry [A]	+\$24

Veneer Top Finish: Recut Veneer
For painted metal front (P) with 1¹/₄"-high cathedral recut veneer top (J₃)

DU	cathedral recut natural maple [A]	+\$0
HU	cathedral recut light anigre [A]	+\$0
JU	cathedral recut aged cherry [A]	+\$0
VU	cathedral recut light brown walnut [A]	+\$0
WU	cathedral recut walnut on cherry [A]	+\$0
XU	cathedral recut medium red cherry [A]	+\$0
ZU	cathedral recut chocolate brown sapele [A]	+\$0

Veneer Top Finish: Wood Veneer
For painted metal front (P) with 1¹/₄"-high wood veneer top (TF)

V3	cherry [A]	+\$18
Z3	warm red cherry [A]	+\$18
Z5	maple [A]	+\$18
2U	light brown walnut [A]	+\$24
3U	medium red cherry [A]	+\$24
6U	chocolate brown sapele [A]	+\$24
ED	aged cherry [A]	+\$24
EG	medium brown walnut [A]	+\$24
EK	medium red walnut [A]	+\$24
EY	light anigre [A]	+\$24
UL	natural maple [A]	+\$24
UQ	light cherry [A]	+\$24
UV	red cherry [A]	+\$24
UX	walnut on cherry [A]	+\$24

Veneer Front Finish: Recut Veneer

For veneer front (V) with no top (NT), 1"-high painted metal top with squared edge (T₁), 1¹/₄"-high painted metal top with squared edge (T₂), 6¹/₂"-high full dome, side-to-side (D₁), 6¹/₂"-high full dome, front-to-back (D₂), 6¹/₂"-high half dome, sloping left (H₁), 6¹/₂"-high half dome, sloping right (H₂), 6¹/₂"-high half dome, sloping front (H₃), or 6¹/₂"-high half dome, sloping back (H₄)

DU	cathedral recut natural maple [A]	+\$0
HU	cathedral recut light anigre [A]	+\$0
JU	cathedral recut aged cherry [A]	+\$0
VU	cathedral recut light brown walnut [A]	+\$0
WU	cathedral recut walnut on cherry [A]	+\$0
XU	cathedral recut medium red cherry [A]	+\$0
ZU	cathedral recut chocolate brown sapele [A]	+\$0

Veneer Front Finish: Wood Veneer

For veneer front (V) with no top (NT), 1"-high painted metal top with squared edge (T₁), 1¹/₄"-high painted metal top with squared edge (T₂), 6¹/₂"-high full dome, side-to-side (D₁), 6¹/₂"-high full dome, front-to-back (D₂), 6¹/₂"-high half dome, sloping left (H₁), 6¹/₂"-high half dome, sloping right (H₂), 6¹/₂"-high half dome, sloping front (H₃), or 6¹/₂"-high half dome, sloping back (H₄)

V3	cherry [A]	+\$74
Z3	warm red cherry [A]	+\$74
Z5	maple [A]	+\$74
2U	light brown walnut [A]	+\$93
3U	medium red cherry [A]	+\$93
6U	chocolate brown sapele [A]	+\$93
ED	aged cherry [A]	+\$93
EG	medium brown walnut [A]	+\$93
EK	medium red walnut [A]	+\$93
EY	light anigre [A]	+\$93
UL	natural maple [A]	+\$93
UQ	light cherry [A]	+\$93
UV	red cherry [A]	+\$93
UX	walnut on cherry [A]	+\$93

Stackable Storage™ Cabinet, 3 Modules High, Sloped Pull *continued*

Veneer Front/Top Finish: Wood Veneer		
<i>For veneer front (V) with 1 1/8"-high wood veneer top and wood composite edge with oversail front (TV1)</i>		
ED	aged cherry <input type="checkbox"/> A	+\$93
EG	medium brown walnut <input type="checkbox"/> A	+\$93
EK	medium red walnut <input type="checkbox"/> A	+\$93
EY	light anigre <input type="checkbox"/> A	+\$93
UL	natural maple <input type="checkbox"/> A	+\$93
UQ	light cherry <input type="checkbox"/> A	+\$93
UV	red cherry <input type="checkbox"/> A	+\$93
UX	walnut on cherry <input type="checkbox"/> A	+\$93

Veneer Front/Top Finish: Recut Veneer		
<i>For veneer front (V) with 1 1/4"-high cathedral recut veneer top (J3)</i>		
DU	cathedral recut natural maple <input type="checkbox"/> A	+\$0
HU	cathedral recut light anigre <input type="checkbox"/> A	+\$0
JU	cathedral recut aged cherry <input type="checkbox"/> A	+\$0
VU	cathedral recut light brown walnut <input type="checkbox"/> A	+\$0
WU	cathedral recut walnut on cherry <input type="checkbox"/> A	+\$0
XU	cathedral recut medium red cherry <input type="checkbox"/> A	+\$0
ZU	cathedral recut chocolate brown sapele <input type="checkbox"/> A	+\$0

Veneer Front/Top Finish: Wood Veneer		
<i>For veneer front (V) with 1 1/4"-high wood veneer top (TF)</i>		
V3	cherry <input type="checkbox"/> A	+\$74
Z3	warm red cherry <input type="checkbox"/> A	+\$74
Z5	maple <input type="checkbox"/> A	+\$74
2U	light brown walnut <input type="checkbox"/> A	+\$93
3U	medium red cherry <input type="checkbox"/> A	+\$93
6U	chocolate brown sapele <input type="checkbox"/> A	+\$93
ED	aged cherry <input type="checkbox"/> A	+\$93
EG	medium brown walnut <input type="checkbox"/> A	+\$93
EK	medium red walnut <input type="checkbox"/> A	+\$93
EY	light anigre <input type="checkbox"/> A	+\$93
UL	natural maple <input type="checkbox"/> A	+\$93
UQ	light cherry <input type="checkbox"/> A	+\$93
UV	red cherry <input type="checkbox"/> A	+\$93
UX	walnut on cherry <input type="checkbox"/> A	+\$93

Step 12. Lock		
KA	keyed alike	+\$0
KC	keyed differently, chrome	+\$0
KD	keyed differently, black	+\$0

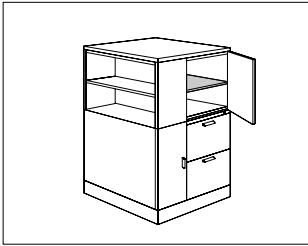
Step 13. Base Height		
B1	1"-high base	+\$0
B2	1 1/2"-high base	+\$0
B3	2 1/4"-high base	+\$0
B4	3 1/4"-high base	+\$0
B5	4 1/4"-high base	+\$32

Step 14. Translucent Finish		
<i>For all translucent door modules (3, 4, 5, or 6)</i>		
FS	frosted <input type="checkbox"/> A	+\$0
TR	clear <input type="checkbox"/> A	+\$0

Step 15. Cable Management Channel		
<i>For file/file (M)</i>		
NC	no cable management channel	+\$0
CC	cable management channel	+\$69

Adjustable Shelf

MSAS.



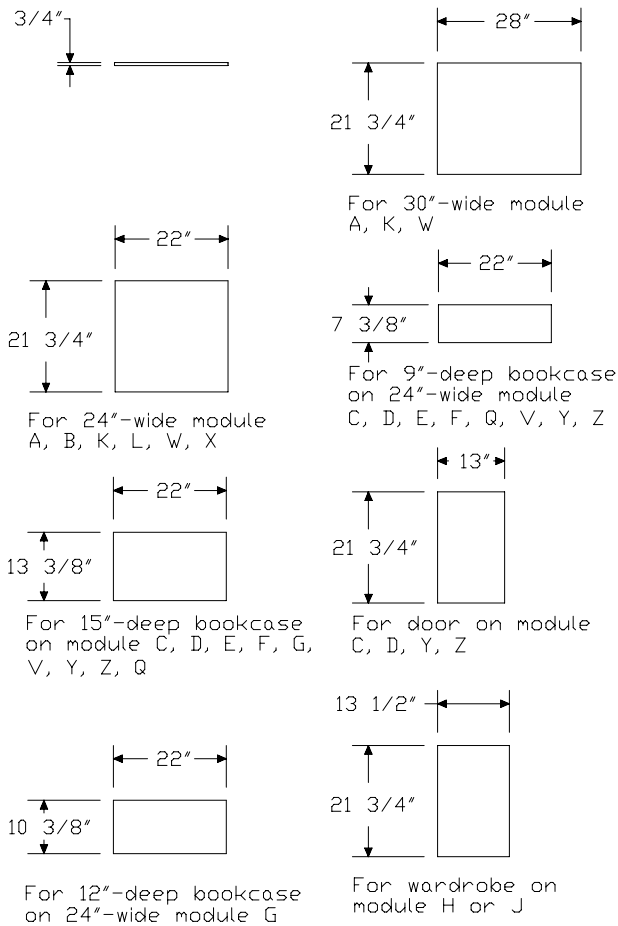
Meridian® Stackable Storage™ Cabinet Components

Product Information

Description

This shelf fits into a Stackable Storage™ cabinet or Stackable Storage cabinet module to store books, binders, and other items. It adjusts in 1/4" increments.

Dimensions



Specification Information

Step 1.

MSAS.

Step 2. Usage

- A** for 24"-wide stackable storage cabinet module A, B, L, K, W, or X
- B** for 30"-wide stackable storage cabinet module A, K, or W
- D** for 9"-deep bookcase on 24"-wide stackable storage cabinet module C, D, E, F, Q, V, Y, or Z
- E** for 15"-deep bookcase on stackable storage cabinet module C, D, E, F, G, Q, V, Y, or Z
- F** for door on stackable storage cabinet module C, D, Y, or Z
- J** for 12"-deep bookcase on 24"-wide stackable storage cabinet module G
- K** for 15"-deep wardrobe on stackable storage cabinet module H or J

Prices for Steps 1-2.

MSAS. A	\$63
B	\$63
D	\$63
E	\$63
F	\$63
J	\$63
K	\$63

Step 3. Paint/Steel Type

SS	smooth paint on smooth steel	+\$0
XS	textured paint on smooth steel	+\$0

Step 4. Surface Finish

For smooth paint on smooth steel (SS)

Nonmetallic Paint	+\$0
Metallic Paint	+\$5

Adjustable Shelf *continued*

Sand Texture Paint

For textured paint on smooth steel (XS)

7L	dune	+\$0
7M	chai	+\$0
7N	grass	+\$0
7U	blue ridge	+\$0
7V	loden	+\$0
7W	napa	+\$0
7Y	sedona	+\$0
7Z	mink	+\$0
8T	gull	+\$0
8Y	moonbeam	+\$0
B4	blue medium	+\$0
ZK	cappuccino	+\$0

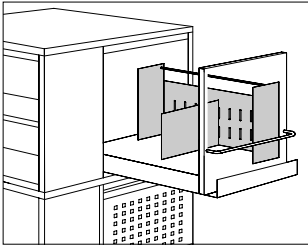
Bright Sand Texture Paint

For textured paint on smooth steel (XS)

91	white	+\$0
CL	cool grey neutral	+\$0
G1	graphite	+\$0
WN	warm grey neutral	+\$0

Binder Backstop

4A-BB



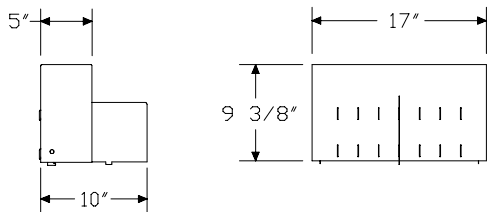
Meridian® Stackable Storage™ Cabinet Accessories

Product Information

Description
 This binder backstop is used on a pullout shelf in a wardrobe/storage cabinet, Stackable Storage™ cabinet, or Stackable Storage cabinet module. It prevents books and binders from falling off the shelf. The backstop includes 1 divider.

Notes
 Order additional binder backstop dividers (4A-BD) separately.

Dimensions



Specification Information

Step 1.
4A-BB \$63

Step 2. Paint/Steel Type
SS smooth paint on smooth steel +\$0
XS textured paint on smooth steel +\$0

Step 3. Surface Finish

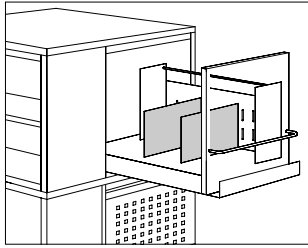
For smooth paint on smooth steel (SS)
 Nonmetallic Paint +\$0
 Metallic Paint +\$5

Sand Texture Paint
For textured paint on smooth steel (XS)
7L dune +\$0
7M chai +\$0
7N grass +\$0
7U blue ridge +\$0
7V loden +\$0
7W napa +\$0
7Y sedona +\$0
7Z mink +\$0
8T gull +\$0
8Y moonbeam +\$0
B4 blue medium +\$0
ZK cappuccino +\$0

Bright Sand Texture Paint
For textured paint on smooth steel (XS)
91 white +\$0
CL cool grey neutral +\$0
G1 graphite +\$0
WN warm grey neutral +\$0

Binder Backstop Divider

4A-BD

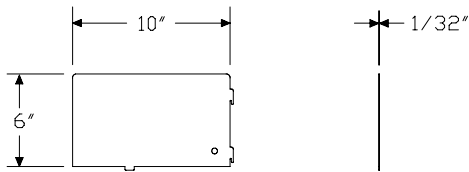


Product Information

Description

This removable divider is used on a pullout shelf in a wardrobe/storage cabinet, Stackable Storage™ cabinet, or Stackable Storage cabinet module. It supports and partitions books and other materials. Package contains 2.

Dimensions



Specification Information

Step 1.

4A-BD \$38

Step 2. Paint/Steel Type

SS smooth paint on smooth steel +\$0
XS textured paint on smooth steel +\$0

Step 3. Surface Finish

For smooth paint on smooth steel (SS)

Nonmetallic Paint +\$0
 Metallic Paint +\$5

Sand Texture Paint

For textured paint on smooth steel (XS)

7L dune +\$0
7M chai +\$0
7N grass +\$0
7U blue ridge +\$0
7V loden +\$0
7W napa +\$0
7Y sedona +\$0
7Z mink +\$0
8T gull +\$0
8Y moonbeam +\$0
B4 blue medium +\$0
ZK cappuccino +\$0

Bright Sand Texture Paint

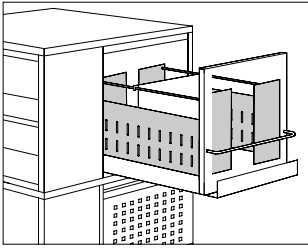
For textured paint on smooth steel (XS)

91 white +\$0
CL cool grey neutral +\$0
G1 graphite +\$0
WN warm grey neutral +\$0

Meridian® Stackable Storage™ Cabinet Accessories

Hanging File Frame

4A-HF

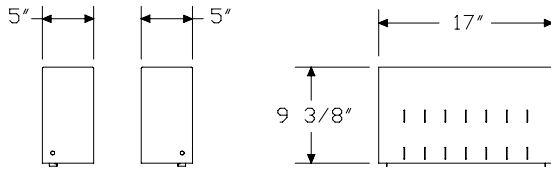


Product Information

Description

This frame holds letter-size hanging folders on a pullout shelf in a wardrobe/storage cabinet, Stackable Storage™ cabinet, or Stackable Storage cabinet module. Attachment hardware is included.

Dimensions



Meridian® Stackable Storage™ Cabinet Accessories

Specification Information

Step 1.

4A-HF \$82

Step 2. Paint/Steel Type

SS smooth paint on smooth steel +\$0
XS textured paint on smooth steel +\$0

Step 3. Surface Finish

For smooth paint on smooth steel (SS)

Nonmetallic Paint +\$0
 Metallic Paint +\$5

Sand Texture Paint

For textured paint on smooth steel (XS)

7L dune +\$0
7M chai +\$0
7N grass +\$0
7U blue ridge +\$0
7V loden +\$0
7W napa +\$0
7Y sedona +\$0
7Z mink +\$0
8T gull +\$0
8Y moonbeam +\$0
B4 blue medium +\$0
ZK cappuccino +\$0

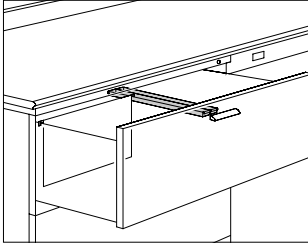
Bright Sand Texture Paint

For textured paint on smooth steel (XS)

91 white +\$0
CL cool grey neutral +\$0
G1 graphite +\$0
WN warm grey neutral +\$0

Front-to-Back Filing Rail,
Meridian® Stackable™ Lateral File

9P001
9P002
9P361
9P362



Product Information

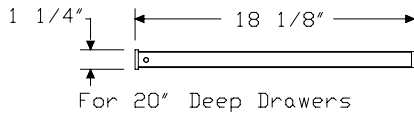
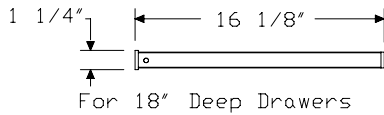
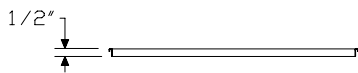
Description

This filing rail holds letter-size hanging folders for front-to-back filing. The 16" rail is used in an 18"-deep Meridian® lateral file drawer. The 18" rail is used in the file drawer of a Meridian Stackable Storage™ cabinet bottom module, 20"-deep Meridian lateral file, or Meridian lateral storage tower.

Notes

Front-to-back filing rail cannot be used in Tu™ or Quadrant® lateral file drawers.

Dimensions



Specification Information

Step 1.

9P

Step 2. Width

00 for 30"- or 42"-wide drawers
36 for 36"-wide drawers

Step 3. Depth

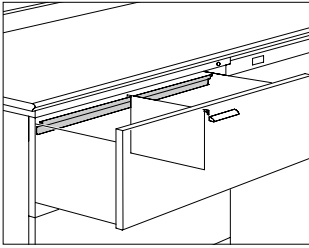
18 18" deep
20 20" deep

Prices for Steps 1-3.

9P0018	\$24
9P0020	\$24
9P3618	\$24
9P3620	\$24

Side-to-Side Filing Rail, Meridian®
Stackable™ Lateral File

- 9R124
- 9R130
- 9R136
- 9R142
- 9R224
- 9R230
- 9R236
- 9R242



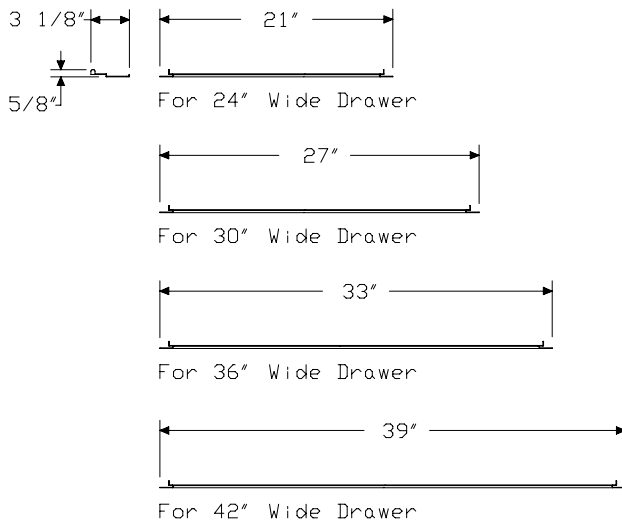
Meridian® Stackable Storage™ Cabinet Accessories

Product Information

Description
This filing rail holds letter- or legal-size hanging folders for side-to-side filing. The 21"-wide rail is used in the file drawer of a 24"-wide Meridian® Stackable Storage™ cabinet bottom module. The 27"-wide rail is used in the file drawer of a 30"-wide Meridian Stackable Storage cabinet bottom module, Meridian lateral file, or Meridian lateral storage tower. The 33"-wide rail is used in the file drawer of a 36"-wide Meridian lateral file. The 39"-wide rail is used in the file drawer of a 42"-wide Meridian lateral file.

Notes
Side-to-side filing rail cannot be used in Tu™ or Quadrant® lateral file drawers.

Dimensions



Specification Information

Step 1.

9R

Step 2. Quantity

- 1 1 filing rail
- 2 2 filing rails

Step 3. Width

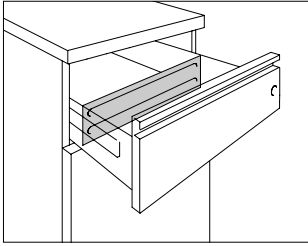
- 2400** for 24"-wide drawers
- 3000** for 30"-wide drawers
- 3600** for 36"-wide drawers
- 4200** for 42"-wide drawers

Prices for Steps 1-3.

9R12400	\$17
9R13000	\$17
9R13600	\$17
9R14200	\$17
9R22400	\$34
9R23000	\$34
9R23600	\$34
9R24200	\$34

Drawer Divider for Box Drawer,
Meridian® Pedestal

73-15
73-18



Product Information

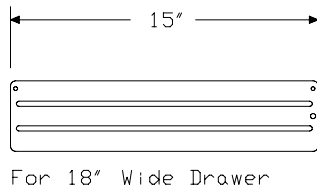
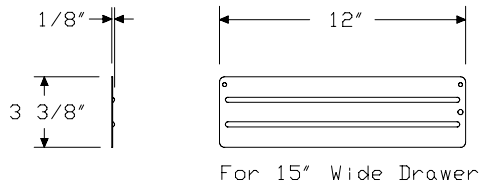
Description

This adjustable divider is used in a box drawer. The 12"-wide divider fits in a 15"-wide box drawer; the 15"-wide divider fits in an 18"-wide box drawer. Finish is black umber.

Notes

Drawer divider cannot be used in Tu™ pedestals or Quadrant® pedestals. For 5000 Series furniture, drawer divider can be used in standard-, bevel-, or contour-pull pedestals.

Dimensions



Specification Information

Step 1.

73-

Step 2. Width

1567-D for 15"-wide drawer (for Meridian® pedestals and 5000 Series furniture)

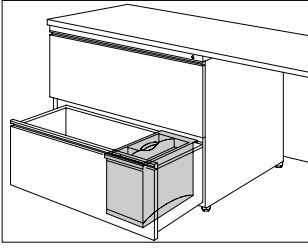
1867-D for 18"-wide drawer (for Meridian pedestals)

Prices for Steps 1-2.

73-1567-D	\$12
73-1867-D	\$15

File Drawer Organizer

LG901

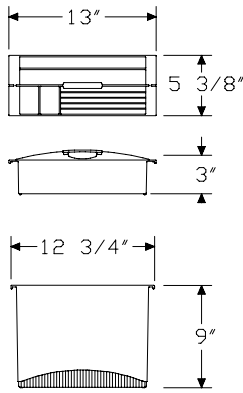


Product Information

Description

This 2-sectioned organizer fits into any file drawer arranged for letter-size filing. The removable top section stores computer disks and other small items. The bottom section stores larger items or can be divided into 3 compartments; it includes 2 vertical dividers. Finish is black umber.

Dimensions



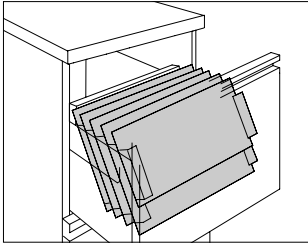
Specification Information

Step 1.

LG901 \$62

Meridian® Stackable Storage™ Cabinet Accessories

File Drawer Organizer, Meridian® 73-98
Pedestal



Product Information

Description

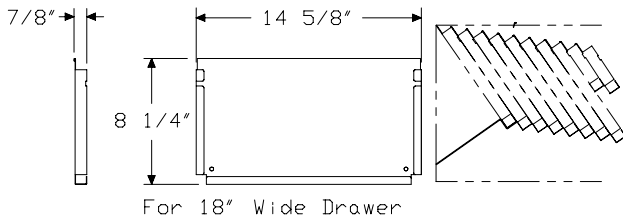
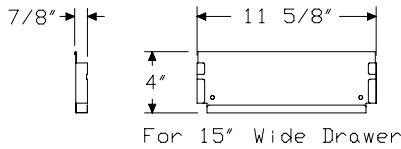
This sectioned organizer stores letter-size stationery and papers in a file drawer. The 12"-wide organizer fits in a 15"-wide file drawer; the 15"-wide organizer fits in an 18"-wide file drawer. Finish is black umber.

Notes

File drawer organizer cannot be used in Tu™ pedestals or Quadrant® pedestals.

For 5000 Series furniture, file drawer organizer can be used in standard-, bevel-, or contour-pull pedestals.

Dimensions



Specification Information

Step 1.

73-9874-

Step 2. Width

FDO for 15"-wide drawer (for Meridian® pedestals and 5000 Series furniture)

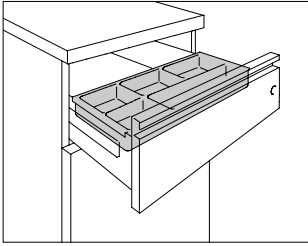
FDO-SP for 18"-wide drawer (for Meridian pedestals)

Prices for Steps 1-2.

73-9874-	FDO	\$135
	FDO-SP	\$163

Pencil Tray for Box Drawer,
Meridian® Pedestal

73-15
73-18



Product Information

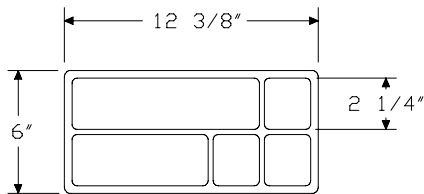
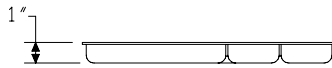
Description

This plastic drawer stores pencils and other small items in a box drawer. The 12"-wide pencil tray fits in a 15"-wide box drawer; the 15"-wide pencil tray fits in an 18"-wide box drawer. Finish is black amber.

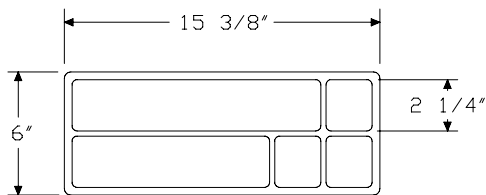
Notes

Pencil tray cannot be used in Tu™ pedestals or Quadrant® pedestals. For 5000 Series furniture, pencil tray can be used in standard-, bevel-, or contour-pull pedestals.

Dimensions



For 15" Wide Drawers



For 18" Wide Drawers

Specification Information

Step 1.

73-

Step 2. Width

1516-PT for 15"-wide drawer (for Meridian® pedestals and 5000 Series furniture)

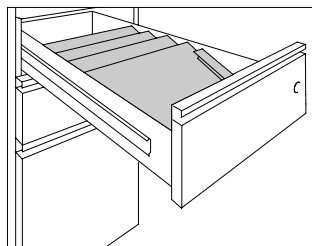
1816-PT for 18"-wide drawer (for Meridian pedestals)

Prices for Steps 1-2.

73-1516-PT	\$19
73-1816-PT	\$22

Stationery Tray for Box Drawer, Meridian® Pedestal

73-70



Product Information

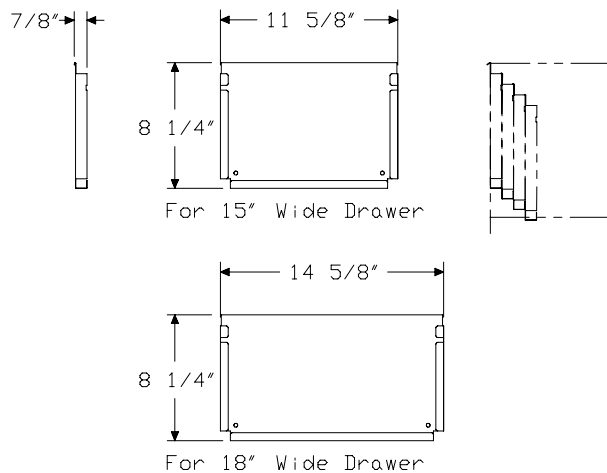
Description

This sectioned tray stores envelopes, stationery, and forms in a box drawer. The 12"-wide tray fits in a 15"-wide box drawer; the 15"-wide tray fits in an 18"-wide box drawer. Finish is black umber.

Notes

Stationery tray cannot be used in Tu™ pedestals or Quadrant® pedestals. For 5000 Series furniture, stationery tray can be used in standard-, bevel-, or contour-pull pedestals.

Dimensions



Specification Information

Step 1.

73-7082-

Step 2. Width

SST for 15"-wide drawer (for Meridian® pedestals and 5000 Series furniture)

SST-SP for 18"-wide drawer (for Meridian pedestals)

Prices for Steps 1-2.

73-7082- SST	\$75
SST-SP	\$85

Index by Product Name

Meridian® Stackable Storage™ Cabinets	
	page(s)
Adjustable Shelf	66
Binder Backstop	68
Binder Backstop Divider	69
Drawer Divider for Box Drawer, Meridian® Pedestal	73
File Drawer Organizer	74
File Drawer Organizer, Meridian® Pedestal	75
Front-to-Back Filing Rail, Meridian® Stackable™ Lateral File	71
Hanging File Frame	70
Mobile Stackable Storage™ Cabinet, 1 Module High, Bevel Pull	26
Mobile Stackable Storage™ Cabinet, 1 Module High, Sloped Pull	45
Mobile Stackable Storage™ Cabinet, 1 Module High, Standard Pull	8
Mobile Stackable Storage™ Cabinet, 2 Modules High, Bevel Pull	33
Mobile Stackable Storage™ Cabinet, 2 Modules High, Sloped Pull	55
Mobile Stackable Storage™ Cabinet, 2 Modules High, Standard Pull	15
Pencil Tray for Box Drawer, Meridian® Pedestal	76
Side-to-Side Filing Rail, Meridian® Stackable™ Lateral File	72
Stackable Storage™ Cabinet, 1 Module High, Bevel Pull	23
Stackable Storage™ Cabinet, 1 Module High, Sloped Pull	41
Stackable Storage™ Cabinet, 1 Module High, Standard Pull	5
Stackable Storage™ Cabinet, 2 Modules High, Bevel Pull	29
Stackable Storage™ Cabinet, 2 Modules High, Sloped Pull	49
Stackable Storage™ Cabinet, 2 Modules High, Standard Pull	11
Stackable Storage™ Cabinet, 3 Modules High, Bevel Pull	37
Stackable Storage™ Cabinet, 3 Modules High, Sloped Pull	60
Stackable Storage™ Cabinet, 3 Modules High, Standard Pull	19
Stationery Tray for Box Drawer, Meridian® Pedestal	77


Index by Product Number

4A-BB	Binder Backstop	page(s) 68	
4A-BD	Binder Backstop Divider	69	
4A-HF	Hanging File Frame	70	
73-15	Drawer Divider for Box Drawer, Meridian® Pedestal	73	
73-15	Pencil Tray for Box Drawer, Meridian® Pedestal	76	
73-18	Drawer Divider for Box Drawer, Meridian® Pedestal	73	
73-18	Pencil Tray for Box Drawer, Meridian® Pedestal	76	
73-70	Stationery Tray for Box Drawer, Meridian® Pedestal	77	
73-98	File Drawer Organizer, Meridian® Pedestal	75	
9P001	Front-to-Back Filing Rail, Meridian® Stackable™ Lateral File	71	
9P002			
9P361			
9P362			
9R124	Side-to-Side Filing Rail, Meridian® Stackable™ Lateral File	72	
9R130			
9R136			
9R142			
9R224			
9R230			
9R236			
9R242			
LG901	File Drawer Organizer	74	
MS142.	Stackable Storage™ Cabinet, 1 Module High, Bevel Pull	23	
MS143.			
MS162.	Stackable Storage™ Cabinet, 1 Module High, Standard Pull	5	
MS163.			
MS1C42	Mobile Stackable Storage™ Cabinet, 1 Module High, Bevel Pull	26	
MS1C43			
MS1C62	Mobile Stackable Storage™ Cabinet, 1 Module High, Standard Pull	8	
MS1C63			
MS1CP2	Mobile Stackable Storage™ Cabinet, 1 Module High, Sloped Pull	45	
MS1CP3			
MS1CV2			
MS1CV3			
MS1P2.	Stackable Storage™ Cabinet, 1 Module High, Sloped Pull	41	
MS1P3.			
MS1V2.			
MS1V3.			
MS242.	Stackable Storage™ Cabinet, 2 Modules High, Bevel Pull	29	
MS243.			
MS262.	Stackable Storage™ Cabinet, 2 Modules High, Standard Pull	11	
MS263.			
MS2C42	Mobile Stackable Storage™ Cabinet, 2 Modules High, Bevel Pull	33	
MS2C43			
MS2C62	Mobile Stackable Storage™ Cabinet, 2 Modules High, Standard Pull	15	
MS2C63			
MS2CP2	Mobile Stackable Storage™ Cabinet, 2 Modules High, Sloped Pull	55	
MS2CP3			
MS2CV2			
MS2CV3			
MS2P2.	Stackable Storage™ Cabinet, 2 Modules High, Sloped Pull	49	
MS2P3.			
MS2V2.			
MS2V3.			
MS342.	Stackable Storage™ Cabinet, 3 Modules High, Bevel Pull	37	
MS343.			
MS362.	Stackable Storage™ Cabinet, 3 Modules High, Standard Pull	19	
MS363.			
MS3P2.	Stackable Storage™ Cabinet, 3 Modules High, Sloped Pull	60	
MS3P3.			
MS3V2.			
MS3V3.			
MSAS.	Adjustable Shelf	66	

For more information about our products and services or to see a list of dealers, please visit us at www.HermanMiller.com or call (800) 851 1196.

This book is recyclable. Printed in U.S.A. on recycled paper.

© 2009 Herman Miller, Inc., Zeeland, Michigan

© HermanMiller, , Abak, Action Office, Aeron, Ambi, Ardea, Aside, Avive, Babble, C2, Caper, Celle, Co/Struc, DOT, Eames, Embody, Equa 2, Ergon 3, Ethospace, Fine-Tune, FlexFront, Formcoat, Ground Cloth, Herman Miller for Healthcare, Herman Miller Options, Intersect, Kinemat, Leaf, Lifework, Limerick, Meridian, Mirra, Passage, Pedastool, Pellicle, Perspectives, PostureFit, Prospects, Quadrant, Reaction, Resolve, RoomTune, Scooter, Stoa, Teneo, V-Wall, Vary Easy, Vivo, and Z-Axis are among the registered trademarks of Herman Miller, Inc., and its owned subsidiaries.

™ About Face, AireWeave, Airia, Arrio, Backfit, Boomerang, Bubbletack, Burdick Group, Celeste, Cellular Suspension, CLT, CoActive, Cognita, Compass, Cygnus, Enchord, EnhancedAccess, E-Wall, Flex-Edge, Flute, Harmonic, Herman Miller for the Home, Herman Miller International Collection, Herman Miller Select, Hopsak 2, Intent, Iota, Keyless Entry, Latitude, Lyris, Multiscrim, My Studio Environments, Nelson, Pixelated Support, Programmable Environments, Q, Rapunzel, Recline Selector, Sense, Setu, Stackable, Stackable Storage, The Be Collection, Thinking is good for you, TriFlex, Tu, and Twist are among the trademarks of Herman Miller, Inc., and its owned subsidiaries.

SM TAP, Textile Alliance Program and Thoughtpile are among the service marks of Herman Miller, Inc.

Chemsurf is a registered trademark of Wilsonart International.

Corian is a registered trademark of DuPont.

FLEXNET is a trademark of Milliken & Co.

Floor Saver Glide™ is a trademark of Carpin Manufacturing Inc.

Geiger is a registered trademark of Geiger International.

Goetz is a trademark of Mark W. Goetz.

Hang-It-All is a registered trademark of Lucia Eames Demetrios, d.b.a. Eames Office.

Holophane is a registered trademark of Holophane.

Ingeo is a trademark of Cargill Dow LLC.

Microsoft and Natural Keyboard are registered trademarks of Microsoft Corporation.

Noguchi® is a registered trademark of The Isamu Noguchi Foundation and Garden Museum.

Qt Quiet technology and Qt are trademarks of Cambridge Sound Management, Inc.